

# Anti-PKM1/2 Antibody [JE07-34]

HA722524



<b>Product Type:</b>	Recombinant Rabbit monoclonal IgG, primary antibodies
<b>Species reactivity:</b>	Human, Mouse, Rat
<b>Applications:</b>	WB, IP
<b>Molecular Wt:</b>	Predicted band size: 58 kDa
<b>Clone number:</b>	JE07-34

**Description:** Pyruvate kinase isozymes M1/M2 (PKM1/M2), also known as pyruvate kinase muscle isozyme (PKM), pyruvate kinase type K, cytosolic thyroid hormone-binding protein (CTHBP), thyroid hormone-binding protein 1 (THBP1), or opa-interacting protein 3 (OIP3), is an enzyme that in humans is encoded by the PKM2 gene. PKM2 is an isoenzyme of the glycolytic enzyme pyruvate kinase. Depending upon the different metabolic functions of the tissues, different isoenzymes of pyruvate kinase are expressed. PKM2 is expressed in some differentiated tissues, such as lung, fat tissue, retina, and pancreatic islets, as well as in all cells with a high rate of nucleic acid synthesis, such as normal proliferating cells, embryonic cells, and especially tumor cells.

**Immunogen:** Recombinant protein within Human PKM aa 50-100.

**Positive control:** HeLa cell lysate, HepG2 cell lysate, MCF7 cell lysate, NIH/3T3 cell lysate, C6 cell lysate, Mouse skeletal muscle tissue lysate, Rat skeletal muscle tissue lysate.

**Subcellular location:** Cytoplasm, Nucleus.

**Database links:** SwissProt P14618 human | P52480 Mouse | P11980 Rat

**Recommended Dilutions:**

<b>WB</b>	1:1,000
<b>IP</b>	1-2 $\mu$ g/sample

**Storage Buffer:** 1\*TBS (pH7.4), 0.05% BSA, 40% Glycerol. Preservative: 0.05% SodiumAzide.

**Storage Instruction:** Store at +4 $^{\circ}$ C after thawing. Aliquot store at -20 $^{\circ}$ C. Avoid repeated freeze / thaw cycles.

**Purity:** Protein A affinity purified.

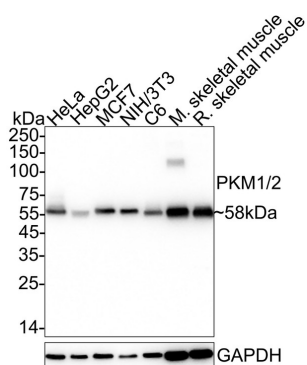
Hangzhou Huaan Biotechnology Co., Ltd.

Orders:0086-571-88062880

Technical:0086-571-89986345

Service mail:support@huabio.cn

华安生物  
HUABIO  
www.huabio.cn



**Fig1:** Western blot analysis of PKM1/2 on different lysates with Rabbit anti-PKM1/2 antibody (HA722524) at 1/1,000 dilution.

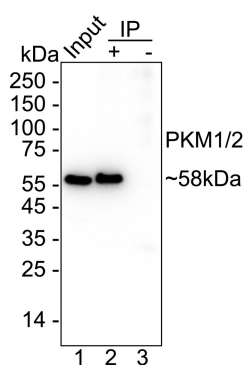
Lane 1: HeLa cell lysate (20  $\mu$ g/Lane)  
 Lane 2: HepG2 cell lysate (20  $\mu$ g/Lane)  
 Lane 3: MCF7 cell lysate (20  $\mu$ g/Lane)  
 Lane 4: NIH/3T3 cell lysate (20  $\mu$ g/Lane)  
 Lane 5: C6 cell lysate (20  $\mu$ g/Lane)  
 Lane 6: Mouse skeletal muscle tissue lysate (30  $\mu$ g/Lane)  
 Lane 7: Rat skeletal muscle tissue lysate (30  $\mu$ g/Lane)

Predicted band size: 58 kDa  
 Observed band size: 58 kDa

Exposure time: 4 seconds; ECL: K1801;

4-20% SDS-PAGE gel.

Proteins were transferred to a PVDF membrane and blocked with 5% NFDm/TBST for 1 hour at room temperature. The primary antibody (HA722524) at 1/1,000 dilution was used in 5% NFDm/TBST at 4°C overnight. Goat Anti-Rabbit IgG - HRP Secondary Antibody (HA1001) at 1/50,000 dilution was used for 1 hour at room temperature.



**Fig2:** PKM1/2 was immunoprecipitated from 0.2 mg HeLa cell lysate with HA722524 at 2  $\mu$ g/25  $\mu$ l agarose. Western blot was performed from the immunoprecipitate using HA722524 at 1/1,000 dilution. Anti-Rabbit IgG for IP Nano-secondary antibody (NBI01H) at 1/5,000 dilution was used for 1 hour at room temperature.

Lane 1: HeLa cell lysate (input)  
 Lane 2: HA722524 IP in HeLa cell lysate  
 Lane 3: Rabbit IgG instead of HA722524 in HeLa cell lysate

Blocking/Dilution buffer: 5% NFDm/TBST  
 Exposure time: 2 seconds; ECL: K1801

---

**Note:** All products are "FOR RESEARCH USE ONLY AND ARE NOT INTENDED FOR DIAGNOSTIC OR THERAPEUTIC USE".

---

### Background References

1. Ma WK et al. ASO-Based PKM Splice-Switching Therapy Inhibits Hepatocellular Carcinoma Growth. *Cancer Res.* 2022 Mar
2. Kejiou NS et al. Pyruvate Kinase M (PKM) binds ribosomes in a poly-ADP ribosylation dependent manner to induce translational stalling. *Nucleic Acids Res.* 2023 Jul

**Hangzhou Huaan Biotechnology Co., Ltd.**

Orders:0086-571-88062880

Technical:0086-571-89986345

Service mail:support@huabio.cn

 华安生物  
HUAABIO  
www.huabio.cn