

Anti-MFGE8 Antibody [PSH05-75]

HA722442



Product Type:	Recombinant Rabbit monoclonal IgG, primary antibodies
Species reactivity:	Human
Applications:	WB
Molecular Wt:	Predicted band size: 43 kDa
Clone number:	PSH05-75

Description: Milk fat globule-EGF factor 8 protein (Mfge8), also known as lactadherin, is a protein that in humans is encoded by the MFGE8 gene. Mfge8 is a secreted protein found in vertebrates, including mammals as well as birds. MFGE8 may function as a cell adhesion protein to connect smooth muscle to elastic fibers in arteries. An amyloid fragment of MFGE8 known as medin accumulates in the aorta with aging. MFGE8 in the vasculature of adults can induce recovery from ischemia by facilitating angiogenesis. It has been suggested that antagonizing MFGE8-induced angiogenesis could be a way of fighting cancer. MFGE8 contains a phosphatidylserine (PS) binding domain, as well as an arginine-glycine-aspartic acid motif, which enables the binding to integrins. MFGE8 binds PS, which is exposed on the surface of apoptotic cells. Opsonization of the apoptotic cells and binding to integrins on the surface of phagocytic cells, mediates the engulfment of the dead cell.

Immunogen: Recombinant protein within human MFGE8 aa 1-387.

Positive control: A549 cell lysate, A431 cell lysate, HeLa cell lysate, MCF7 cell lysate, SK-Br-3 cell lysate, BT-20 cell lysate.

Subcellular location: Membrane, Secreted, Cytoplasmic vesicle, secretory vesicle, acrosome membrane.

Database links: SwissProt: Q08431 Human | P21956 Mouse | P70490 Rat

Recommended Dilutions:

WB 1:1,000

Storage Buffer: PBS (pH7.4), 0.1% BSA, 40% Glycerol. Preservative: 0.05% Sodium Azide.

Storage Instruction: Shipped at 4°C. Store at +4°C short term (1-2 weeks). It is recommended to aliquot into single-use upon delivery. Store at -20°C long term.

Purity: Protein A affinity purified.

Hangzhou Huaan Biotechnology Co., Ltd.

Orders:0086-571-88062880

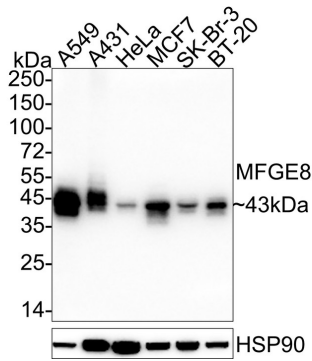
Technical:0086-571-89986345

Service mail:support@huabio.cn

华安生物
HUABIO
www.huabio.cn

Images

Fig1: Western blot analysis of MFGE8 on different lysates with Rabbit anti-MFGE8 antibody (HA722442) at 1/1,000 dilution.



Lane 1: A549 cell lysate

Lane 2: A431 cell lysate

Lane 3: HeLa cell lysate

Lane 4: MCF7 cell lysate

Lane 5: SK-Br-3 cell lysate

Lane 6: BT-20 cell lysate

Lysates/proteins at 20 µg/Lane.

Predicted band size: 43 kDa

Observed band size: 43 kDa

Exposure time: 42 seconds; ECL: K1801;

4-20% SDS-PAGE gel.

Proteins were transferred to a PVDF membrane and blocked with 5% NFDM/TBST for 1 hour at room temperature. The primary antibody (HA722442) at 1/1,000 dilution was used in 5% NFDM/TBST at 4°C overnight. Goat Anti-Rabbit IgG - HRP Secondary Antibody (HA1001) at 1/50,000 dilution was used for 1 hour at room temperature.

Note: All products are "FOR RESEARCH USE ONLY AND ARE NOT INTENDED FOR DIAGNOSTIC OR THERAPEUTIC USE".

Background References

1. Liu B et al. Targeting MFGE8 secreted by cancer-associated fibroblasts blocks angiogenesis and metastasis in esophageal squamous cell carcinoma. *Proc Natl Acad Sci U S A*. 2023 Oct
2. Datta R et al. MFGE8 inhibits insulin signaling through PTP1B. *bioRxiv [Preprint]*. 2023 Jun

Hangzhou Huaan Biotechnology Co., Ltd.

Orders:0086-571-88062880

Technical:0086-571-89986345

Service mail:support@huabio.cn

华安生物
HUABIO
www.huabio.cn