

## Anti-Human CD200 Antibody [PSH05-60] - BSA and Azide free (Detector)

# HA722380



<b>Product Type:</b>	Recombinant Rabbit monoclonal IgG, primary antibodies
<b>Species reactivity:</b>	Human
<b>Applications:</b>	ELISA(Det)
<b>Clone number:</b>	PSH05-60

**Description:** This gene encodes a type I membrane glycoprotein containing two extracellular immunoglobulin domains, a transmembrane and a cytoplasmic domain. This gene is expressed by various cell types, including B cells, a subset of T cells, thymocytes, endothelial cells, and neurons. The encoded protein plays an important role in immunosuppression and regulation of anti-tumor activity. Alternative splicing results in multiple transcript variants encoding different isoforms.

**Immunogen:** Recombinant protein within human CD200 aa 31-232 (Extracellular).

**Positive control:** Recombinant human CD200 protein (HA210665).

**Subcellular location:** Cell membrane.

**Database links:** SwissProt: P41217 Human

**Recommended Dilutions:**

**ELISA(Det)** Use at an assay dependent concentration. Can be paired for Sandwich ELISA with Rabbit monoclonal [PSH05-59] to Human CD200 (Capture) (HA722379) and recombinant standard Human CD200 protein (HA210665). The reference range value is 30.9-2500pg/ml.

**Storage Buffer:** PBS (pH7.4).

**Storage Instruction:** Store at +4°C after thawing. Aliquot store at -20°C. Avoid repeated freeze / thaw cycles.

**Purity:** Protein A affinity purified.

Hangzhou Huaan Biotechnology Co., Ltd.

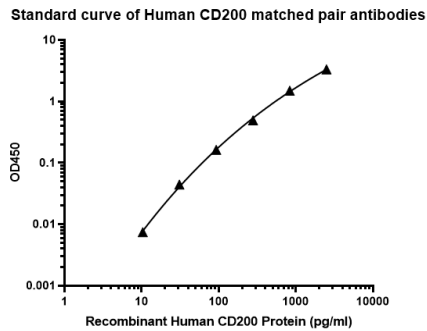
Orders:0086-571-88062880

Technical:0086-571-89986345

Service mail:support@huabio.cn

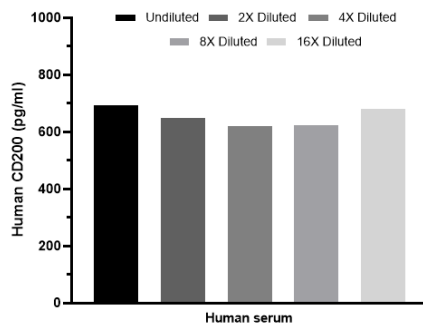
华安生物  
HUABIO  
www.huabio.cn

## Images



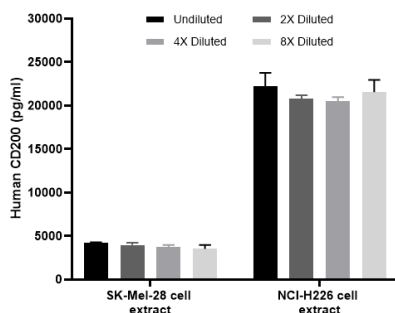
**Fig1:** Sandwich ELISA analysis of human CD200 matched pair antibodies

Elisa assay was performed by coating wells of a 96-well plate with 100  $\mu$ l per well of capture antibody (HA722379) diluted in carbonate/bicarbonate buffer, at a concentration of 2  $\mu$ g/mL overnight at 4°C. Wells of the plate were washed, blocked with 150  $\mu$ l 0.05% tween-20 1% BSA blocking buffer, and incubated with serial diluted recombinant human CD200 protein (HA210665) starting from 2,500 pg/ml to 0 pg/ml and detect antibody (HA722380, Biotin, 0.2  $\mu$ g/ml) for 1 hour at 30°C with shaking. Then the plate was washed and incubated with 100  $\mu$ l per well of SA-HRP for 0.5 hour at 30°C with shaking. Detection was performed using an Ultra TMB Substrate for 10 minutes at room temperature in the dark. The reaction was stopped with sulfuric acid and absorbances were read on a spectrophotometer at 450 nm.



**Fig2:** Interpolated concentrations of native CD200 in human serum samples.

The concentrations of CD200 were interpolated from the CD200 standard curves and corrected for sample dilution. Undiluted samples are human serum 100%. The mean CD200 concentration was determined to be 652.9 pg/ml in human serum.



**Fig3:** Interpolated concentrations of native CD200 in SK-Mel-28 and NCI-H226 extract samples based on a 1,000  $\mu$ g/ml extract load.

The concentrations of CD200 were measured in triplicates, interpolated from the CD200 standard curve and corrected for sample dilution. Undiluted samples are SK-Mel-28 extract 20% and NCI-H226 extract 5%. The interpolated dilution factor corrected values are plotted (mean  $\pm$  SD, n=3). The mean CD200 concentration was determined to be 3,860 pg/ml in SK-Mel-28 extract and 21,265 pg/ml in NCI-H226 extract.

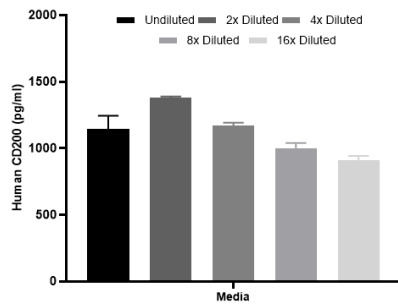
Hangzhou Huan Biotechnology Co., Ltd.

Orders:0086-571-88062880

Technical:0086-571-89986345

Service mail:support@huabio.cn

华安生物  
HUABIO  
www.huabio.cn



**Fig4:** Interpolated concentrations of spiked CD200 in human cell culture media samples.

The concentrations of CD200 were measured in triplicates, interpolated from the CD200 standard curves and corrected for sample dilution. Undiluted samples are as follows: cell culture media 50%. The interpolated dilution factor corrected values are plotted (mean +/- SD, n=3).

**Note:** All products are "FOR RESEARCH USE ONLY AND ARE NOT INTENDED FOR DIAGNOSTIC OR THERAPEUTIC USE".

### Background References

1. Gorczynski R., Chen Z., Kai Y., Lee L., Wong S., Marsden P.A. CD200 is a ligand for all members of the CD200R family of immunoregulatory molecules. *J. Immunol.* 172:7744-7749 (2004).
2. Minas K., Liversidge J. Is the CD200/CD200 receptor interaction more than just a myeloid cell inhibitory signal? *Crit Rev Immunol* 26:213-230 (2006).

Hangzhou Huan Biotechnology Co., Ltd.

Orders:0086-571-88062880

Technical:0086-571-89986345

Service mail:support@huabio.cn

华安生物  
HUABIO  
www.huabio.cn