

Anti-BTF Antibody [JE77-57]

HA722374



Product Type:	Recombinant Rabbit monoclonal IgG, primary antibodies
Species reactivity:	Human, Mouse, Rat
Applications:	WB, IF-Cell, IHC-P
Molecular Wt:	Predicted band size: 106 kDa
Clone number:	JE77-57

Description: Bcl-2-associated transcription factor 1 is a Bcl-2 family protein in humans that is encoded by the BCLAF1 gene. This gene encodes a transcriptional repressor that interacts with several members of the BCL-2 family of proteins. Overexpression of this protein induces apoptosis, which can be suppressed by co-expression of BCL2 proteins. The protein localizes to dot-like structures throughout the nucleus and redistributes to a zone near the nuclear envelope in cells undergoing apoptosis. Multiple transcript variants encoding different protein isoforms have been found for this gene.

Immunogen: Recombinant protein within Human BTF aa 51-150 / 920.

Positive control: HEK-293 cell lysate, HeLa cell lysate, NIH/3T3 cell lysate, C6 cell lysate, rat testis tissue lysate, HEK-293, NIH/3T3, C6, human colon tissue, human testis tissue, mouse colon tissue, mouse testis tissue, rat colon tissue, rat testis tissue.

Subcellular location: Cytoplasm, Nucleus, Nucleus speckle, nucleoplasm.

Database links: SwissProt: Q9NYF8 Human | Q8K019 Mouse
Entrez Gene: 293017 Rat

Recommended Dilutions:

WB	1:1,000
IF-Cell	1:100
IHC-P	1:200-1:1,000

Storage Buffer: 1*TBS (pH7.4), 0.05% BSA, 40% Glycerol. Preservative: 0.05% Sodium Azide.

Storage Instruction: Shipped at 4°C. Store at +4°C short term (1-2 weeks). It is recommended to aliquot into single-use upon delivery. Store at -20°C long term.

Purity: Protein A affinity purified.

Hangzhou Huaan Biotechnology Co., Ltd.

Orders:0086-571-88062880

Technical:0086-571-89986345

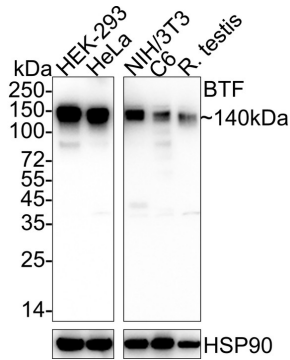
Service mail:support@huabio.cn

 华安生物
HUABIO
www.huabio.cn

Images

Fig1: Western blot analysis of BTF on different lysates with Rabbit anti-BTF antibody (HA722374) at 1/1,000 dilution.

Lane 1: HEK-293 cell lysate
 Lane 2: HeLa cell lysate
 Lane 3: NIH/3T3 cell lysate
 Lane 4: C6 cell lysate
 Lane 5: Rat testis tissue lysate



Lysates/proteins at 20 µg/Lane.

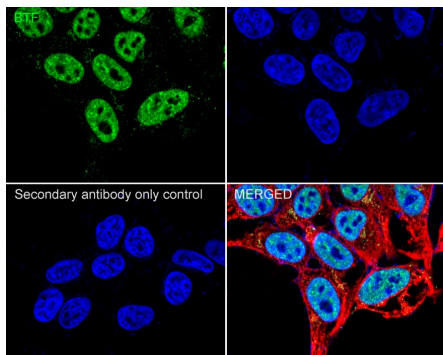
Predicted band size: 106 kDa
 Observed band size: 140 kDa

Exposure time: Lane 1-2: 20 seconds; Lane 3-5: 46 seconds;
 ECL: K1801;

4-20% SDS-PAGE gel.

Proteins were transferred to a PVDF membrane and blocked with 5% NFDM/TBST for 1 hour at room temperature. The primary antibody (HA722374) at 1/1,000 dilution was used in 5% NFDM/TBST at 4°C overnight. Goat Anti-Rabbit IgG - HRP Secondary Antibody (HA1001) at 1/50,000 dilution was used for 1 hour at room temperature.

Fig2: Immunocytochemistry analysis of HEK-293 cells labeling BTF with Rabbit anti-BTF antibody (HA722374) at 1/100 dilution.



Cells were fixed in 4% paraformaldehyde for 20 minutes at room temperature, permeabilized with 0.1% Triton X-100 in PBS for 5 minutes at room temperature, then blocked with 1% BSA in 10% negative goat serum for 1 hour at room temperature. Cells were then incubated with Rabbit anti-BTF antibody (HA722374) at 1/100 dilution in 1% BSA in PBST overnight at 4 °C. Goat Anti-Rabbit IgG H&L (iFluor™ 488, HA1121) was used as the secondary antibody at 1/1,000 dilution. PBS instead of the primary antibody was used as the secondary antibody only control. Nuclear DNA was labelled in blue with DAPI. Beta tubulin (M1305-2, red) was stained at 1/100 dilution overnight at +4 °C. Goat Anti-Mouse IgG H&L (iFluor™ 594, HA1126) was used as the secondary antibody at 1/1,000 dilution.

Hangzhou Huaan Biotechnology Co., Ltd.

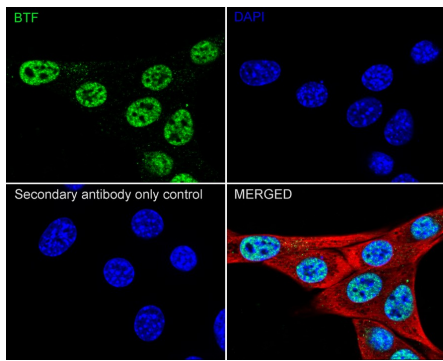
Orders:0086-571-88062880

Technical:0086-571-89986345

Service mail:support@huabio.cn

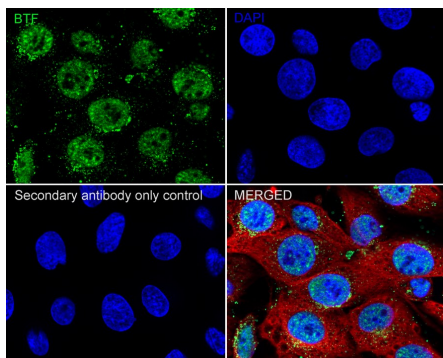
华安生物
 HUABIO
 www.huabio.cn

Fig3: Immunocytochemistry analysis of NIH/3T3 cells labeling BTF with Rabbit anti-BTF antibody (HA722374) at 1/100 dilution.



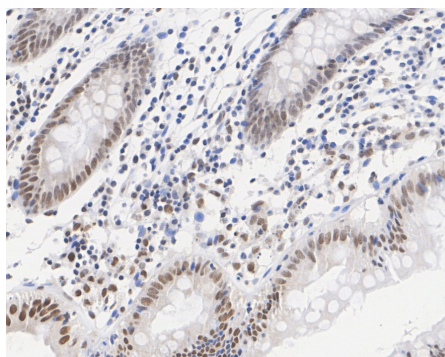
Cells were fixed in 4% paraformaldehyde for 20 minutes at room temperature, permeabilized with 0.1% Triton X-100 in PBS for 5 minutes at room temperature, then blocked with 1% BSA in 10% negative goat serum for 1 hour at room temperature. Cells were then incubated with Rabbit anti-BTF antibody (HA722374) at 1/100 dilution in 1% BSA in PBST overnight at 4 °C. Goat Anti-Rabbit IgG H&L (iFluor™ 488, HA1121) was used as the secondary antibody at 1/1,000 dilution. PBS instead of the primary antibody was used as the secondary antibody only control. Nuclear DNA was labelled in blue with DAPI. Beta tubulin (M1305-2, red) was stained at 1/100 dilution overnight at +4°C. Goat Anti-Mouse IgG H&L (iFluor™ 594, HA1126) was used as the secondary antibody at 1/1,000 dilution.

Fig4: Immunocytochemistry analysis of C6 cells labeling BTF with Rabbit anti-BTF antibody (HA722374) at 1/100 dilution.



Cells were fixed in 4% paraformaldehyde for 20 minutes at room temperature, permeabilized with 0.1% Triton X-100 in PBS for 5 minutes at room temperature, then blocked with 1% BSA in 10% negative goat serum for 1 hour at room temperature. Cells were then incubated with Rabbit anti-BTF antibody (HA722374) at 1/100 dilution in 1% BSA in PBST overnight at 4 °C. Goat Anti-Rabbit IgG H&L (iFluor™ 488, HA1121) was used as the secondary antibody at 1/1,000 dilution. PBS instead of the primary antibody was used as the secondary antibody only control. Nuclear DNA was labelled in blue with DAPI. Beta tubulin (M1305-2, red) was stained at 1/100 dilution overnight at +4°C. Goat Anti-Mouse IgG H&L (iFluor™ 594, HA1126) was used as the secondary antibody at 1/1,000 dilution.

Fig5: Immunohistochemical analysis of paraffin-embedded human colon tissue with Rabbit anti-BTF antibody (HA722374) at 1/200 dilution.



The section was pre-treated using heat mediated antigen retrieval with sodium citrate buffer (pH 6.0) (high pressure) for 2 minutes. The tissues were blocked in 1% BSA for 20 minutes at room temperature, washed with ddH₂O and PBS, and then probed with the primary antibody (HA722374) at 1/200 dilution for 1 hour at room temperature. The detection was performed using an HRP conjugated compact polymer system. DAB was used as the chromogen. Tissues were counterstained with hematoxylin and mounted with DPX.

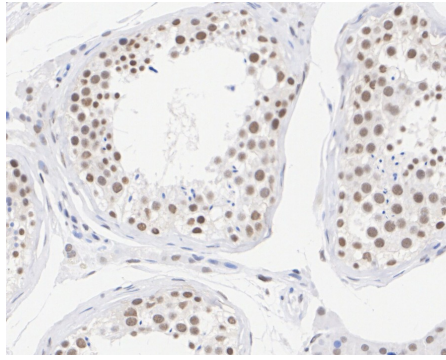


Fig6: Immunohistochemical analysis of paraffin-embedded human testis tissue with Rabbit anti-BTF antibody (HA722374) at 1/200 dilution.

The section was pre-treated using heat mediated antigen retrieval with sodium citrate buffer (pH 6.0) (high pressure) for 2 minutes. The tissues were blocked in 1% BSA for 20 minutes at room temperature, washed with ddH₂O and PBS, and then probed with the primary antibody (HA722374) at 1/200 dilution for 1 hour at room temperature. The detection was performed using an HRP conjugated compact polymer system. DAB was used as the chromogen. Tissues were counterstained with hematoxylin and mounted with DPX.

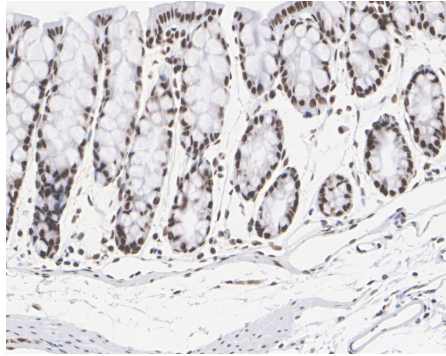


Fig7: Immunohistochemical analysis of paraffin-embedded mouse colon tissue with Rabbit anti-BTF antibody (HA722374) at 1/200 dilution.

The section was pre-treated using heat mediated antigen retrieval with sodium citrate buffer (pH 6.0) (high pressure) for 2 minutes. The tissues were blocked in 1% BSA for 20 minutes at room temperature, washed with ddH₂O and PBS, and then probed with the primary antibody (HA722374) at 1/200 dilution for 1 hour at room temperature. The detection was performed using an HRP conjugated compact polymer system. DAB was used as the chromogen. Tissues were counterstained with hematoxylin and mounted with DPX.

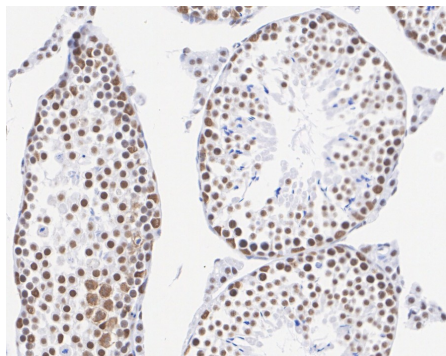


Fig8: Immunohistochemical analysis of paraffin-embedded mouse testis tissue with Rabbit anti-BTF antibody (HA722374) at 1/1,000 dilution.

The section was pre-treated using heat mediated antigen retrieval with sodium citrate buffer (pH 6.0) (high pressure) for 2 minutes. The tissues were blocked in 1% BSA for 20 minutes at room temperature, washed with ddH₂O and PBS, and then probed with the primary antibody (HA722374) at 1/1,000 dilution for 1 hour at room temperature. The detection was performed using an HRP conjugated compact polymer system. DAB was used as the chromogen. Tissues were counterstained with hematoxylin and mounted with DPX.

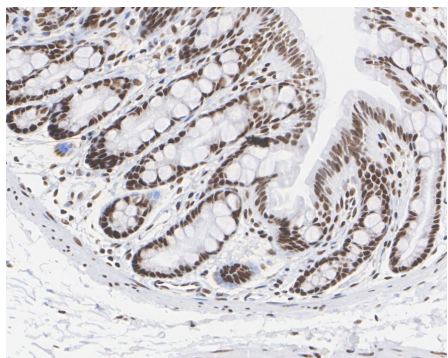


Fig9: Immunohistochemical analysis of paraffin-embedded rat colon tissue with Rabbit anti-BTF antibody (HA722374) at 1/200 dilution.

The section was pre-treated using heat mediated antigen retrieval with sodium citrate buffer (pH 6.0) (high pressure) for 2 minutes. The tissues were blocked in 1% BSA for 20 minutes at room temperature, washed with ddH₂O and PBS, and then probed with the primary antibody (HA722374) at 1/200 dilution for 1 hour at room temperature. The detection was performed using an HRP conjugated compact polymer system. DAB was used as the chromogen. Tissues were counterstained with hematoxylin and mounted with DPX.

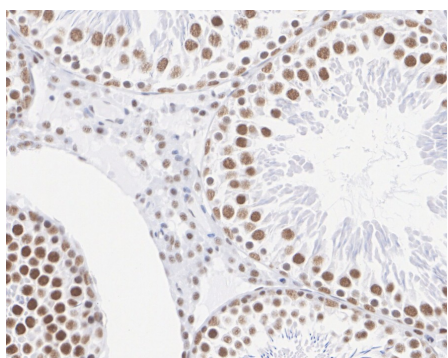


Fig10: Immunohistochemical analysis of paraffin-embedded rat testis tissue with Rabbit anti-BTF antibody (HA722374) at 1/1,000 dilution.

The section was pre-treated using heat mediated antigen retrieval with sodium citrate buffer (pH 6.0) (high pressure) for 2 minutes. The tissues were blocked in 1% BSA for 20 minutes at room temperature, washed with ddH₂O and PBS, and then probed with the primary antibody (HA722374) at 1/1,000 dilution for 1 hour at room temperature. The detection was performed using an HRP conjugated compact polymer system. DAB was used as the chromogen. Tissues were counterstained with hematoxylin and mounted with DPX.

Note: All products are "FOR RESEARCH USE ONLY AND ARE NOT INTENDED FOR DIAGNOSTIC OR THERAPEUTIC USE".

Background References

1. Yu Z et al. Function of BCLAF1 in human disease. *Oncol Lett.* 2022 Feb
2. Jiang K et al. BCLAF1, a functional partner of BACH1, participates in DNA damage response. *DNA Repair (Amst).* 2022 Oct

Hangzhou Huan Biotechnology Co., Ltd.

Orders:0086-571-88062880

Technical:0086-571-89986345

Service mail:support@huabio.cn

华安生物
HUABIO
www.huabio.cn