

Anti-GUCY1B3 Antibody [JE41-09]

HA722314



Product Type:	Recombinant Rabbit monoclonal IgG, primary antibodies
Species reactivity:	Human, Mouse, Rat
Applications:	WB
Molecular Wt:	Predicted band size: 71 kDa
Clone number:	JE41-09

Description: Guanylate cyclase soluble subunit beta-1 is an enzyme that in humans is encoded by the GUCY1B3 gene. Soluble guanylate cyclase (sGC), a heterodimeric protein consisting of an alpha and a beta subunit, catalyzes the conversion of GTP to the second messenger cGMP and functions as the main receptor for nitric oxide and nitrovasodilator drugs. GUCY1B3 has been shown to interact with Heat shock protein 90kDa alpha (cytosolic), member A1 and Endothelial NOS.

Immunogen: Recombinant protein within Human GUCY1B3 aa 1-100 / 619.

Positive control: Human lung tissue lysate, human brain tissue lysate, mouse lung tissue lysate, mouse brain tissue lysate, mouse spleen tissue lysate, rat brain tissue lysate, rat spleen tissue lysate.

Subcellular location: Cytoplasm.

Database links: SwissProt: Q02153 Human | O54865 Mouse | P20595 Rat

Recommended Dilutions:

WB 1:1,000

Storage Buffer: 1*TBS (pH7.4), 0.05% BSA, 40% Glycerol. Preservative: 0.05% Sodium Azide.

Storage Instruction: Shipped at 4°C. Store at +4°C short term (1-2 weeks). It is recommended to aliquot into single-use upon delivery. Store at -20°C long term.

Purity: Protein A affinity purified.

Hangzhou Huaan Biotechnology Co., Ltd.

Orders:0086-571-88062880

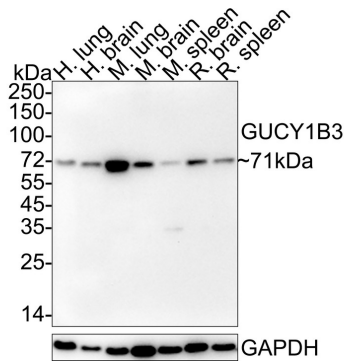
Technical:0086-571-89986345

Service mail:support@huabio.cn

华安生物
HUABIO
www.huabio.cn

Images

Fig1: Western blot analysis of GUCY1B3 on different lysates with Rabbit anti-GUCY1B3 antibody (HA722314) at 1/1,000 dilution.



Lane 1: Human lung tissue lysate
 Lane 2: Human brain tissue lysate
 Lane 3: Mouse lung tissue lysate
 Lane 4: Mouse brain tissue lysate
 Lane 5: Mouse spleen tissue lysate
 Lane 6: Rat brain tissue lysate
 Lane 7: Rat spleen tissue lysate

Lysates/proteins at 20 µg/Lane.

Predicted band size: 71 kDa

Observed band size: 71 kDa

Exposure time: 3 minutes; ECL: K1801;

4-20% SDS-PAGE gel.

Proteins were transferred to a PVDF membrane and blocked with 5% NFDM/TBST for 1 hour at room temperature. The primary antibody (HA722314) at 1/1,000 dilution was used in 5% NFDM/TBST at 4°C overnight. Goat Anti-Rabbit IgG - HRP Secondary Antibody (HA1001) at 1/50,000 dilution was used for 1 hour at room temperature.

Note: All products are "FOR RESEARCH USE ONLY AND ARE NOT INTENDED FOR DIAGNOSTIC OR THERAPEUTIC USE".

Background References

1. Korkmaz Y et al. Dental Pulp Inflammation Initiates the Occurrence of Mast Cells Expressing the alpha(1) and beta(1) Subunits of Soluble Guanylyl Cyclase. *Int J Mol Sci.* 2023 Jan
2. Vishnolia KK et al. sGC Activity and Regulation of Blood Flow in a Zebrafish Model System. *Front Physiol.* 2021 Feb

Hangzhou Huaan Biotechnology Co., Ltd.

Orders:0086-571-88062880

Technical:0086-571-89986345

Service mail:support@huabio.cn

华安生物
 HUABIO
 www.huabio.cn