

Anti-Inhibin alpha Antibody [PD01-29]

HA722301



Product Type:	Recombinant Rabbit monoclonal IgG, primary antibodies
Species reactivity:	Human, Mouse, Rat
Applications:	IHC-P, WB
Molecular Wt:	Predicted band size: 40 kDa
Clone number:	PD01-29

Description: Inhibin, alpha, also known as INHA, is a protein which in humans is encoded by the INHA gene. The inhibin alpha subunit joins either the beta A or beta B subunit to form a pituitary FSH secretion inhibitor. Inhibin has been shown to regulate gonadal stromal cell proliferation negatively and to have tumour-suppressor activity. In addition, serum levels of inhibin have been shown to reflect the size of granulosa-cell tumors and can therefore be used as a marker for primary as well as recurrent disease. However, in prostate cancer, expression of the inhibin alpha-subunit gene was suppressed and was not detectable in poorly differentiated tumor cells. Furthermore, because expression in gonadal and various extragonadal tissues may vary severalfold in a tissue-specific fashion, it is proposed that inhibin may be both a growth/differentiation factor and a hormone.

Immunogen: Synthetic peptide within Human Inhibin alpha aa 233-366.

Positive control: Mouse ovary tissue lysate, mouse testis tissue lysate, rat ovary tissue lysate, rat testis tissue lysate, human adrenal gland tissue, human ovary granular cell tumor tissue.

Subcellular location: Secreted.

Database links: SwissProt: P05111 Human | Q04997 Mouse | P17490 Rat

Recommended Dilutions:

IHC-P	1:500-1:1,000
WB	1:1,000

Storage Buffer: PBS (pH7.4), 0.1% BSA, 40% Glycerol. Preservative: 0.05% Sodium Azide.

Storage Instruction: Shipped at 4°C. Store at +4°C short term (1-2 weeks). It is recommended to aliquot into single-use upon delivery. Store at -20°C long term.

Purity: Protein A affinity purified.

Hangzhou Huaan Biotechnology Co., Ltd.

Orders:0086-571-88062880

Technical:0086-571-89986345

Service mail:support@huabio.cn

 华安生物
HUABIO
www.huabio.cn

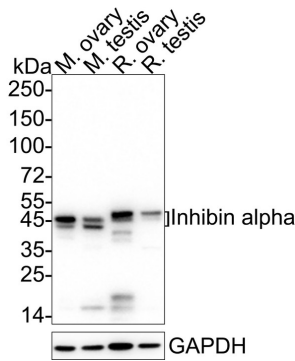


Fig1: Western blot analysis of Inhibin alpha on different lysates with Rabbit anti-Inhibin alpha antibody (HA722301) at 1/1,000 dilution.

Lane 1: Mouse ovary tissue lysate
 Lane 2: Mouse testis tissue lysate
 Lane 3: Rat ovary tissue lysate
 Lane 4: Rat testis tissue lysate

Lysates/proteins at 20 µg/Lane.

Predicted band size: 40 kDa
 Observed band size: 40-45 kDa

Exposure time: 16 seconds; ECL: K1801;

4-20% SDS-PAGE gel.

Proteins were transferred to a PVDF membrane and blocked with 5% NFDM/TBST for 1 hour at room temperature. The primary antibody (HA722301) at 1/1,000 dilution was used in 5% NFDM/TBST at 4°C overnight. Goat Anti-Rabbit IgG - HRP Secondary Antibody (HA1001) at 1/50,000 dilution was used for 1 hour at room temperature.

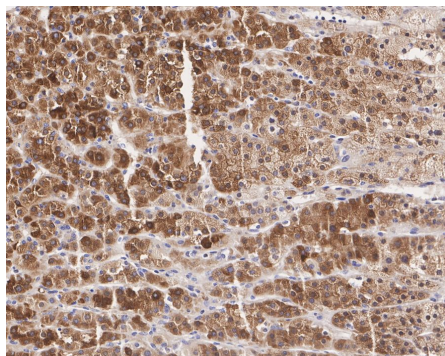


Fig2: Immunohistochemical analysis of paraffin-embedded human adrenal gland tissue with Rabbit anti-Inhibin alpha antibody (HA722301) at 1/500 dilution.

The section was pre-treated using heat mediated antigen retrieval with Tris-EDTA buffer (pH 9.0) for 20 minutes. The tissues were blocked in 1% BSA for 20 minutes at room temperature, washed with ddH₂O and PBS, and then probed with the primary antibody (HA722301) at 1/500 dilution for 1 hour at room temperature. The detection was performed using an HRP conjugated compact polymer system. DAB was used as the chromogen. Tissues were counterstained with hematoxylin and mounted with DPX.

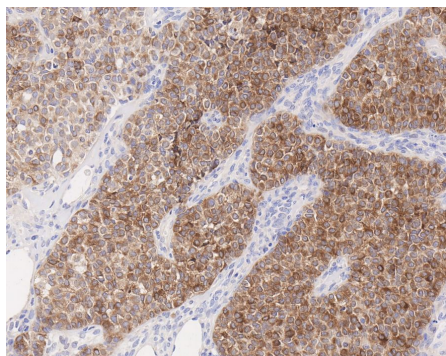


Fig3: Immunohistochemical analysis of paraffin-embedded human ovary granular cell tumor tissue with Rabbit anti-Inhibin alpha antibody (HA722301) at 1/500 dilution.

The section was pre-treated using heat mediated antigen retrieval with Tris-EDTA buffer (pH 9.0) for 20 minutes. The tissues were blocked in 1% BSA for 20 minutes at room temperature, washed with ddH₂O and PBS, and then probed with the primary antibody (HA722301) at 1/500 dilution for 1 hour at room temperature. The detection was performed using an HRP conjugated compact polymer system. DAB was used as the chromogen. Tissues were counterstained with hematoxylin and mounted with DPX.

Note: All products are "FOR RESEARCH USE ONLY AND ARE NOT INTENDED FOR DIAGNOSTIC OR THERAPEUTIC USE".

Background References

1. Mete O et al. Significance of Alpha-inhibin Expression in Pheochromocytomas and Paragangliomas. Am J Surg Pathol. 2021 Sep
2. Huang L et al. Elevated expression of inhibin alpha gene in sterile allotriploid crucian carp. Gen Comp Endocrinol. 2021 Oct

Hangzhou Huaan Biotechnology Co., Ltd.

Orders:0086-571-88062880

Technical:0086-571-89986345

Service mail:support@huabio.cn

华安生物
HUABIO
www.huabio.cn