

## Biotin Conjugated Anti-beta Amyloid 1-42 Antibody [PSH03-99]

# HA722293



<b>Product Type:</b>	Recombinant Rabbit monoclonal IgG, primary antibodies
<b>Species reactivity:</b>	Human, Mouse, Rat
<b>Applications:</b>	ELISA(Det)
<b>Molecular Wt:</b>	Predicted band size: 4 kDa
<b>Clone number:</b>	PSH03-99

**Description:** This gene encodes a cell surface receptor and transmembrane precursor protein that is cleaved by secretases to form a number of peptides. Some of these peptides are secreted and can bind to the acetyltransferase complex APBB1/TIP60 to promote transcriptional activation, while others form the protein basis of the amyloid plaques found in the brains of patients with Alzheimer disease. In addition, two of the peptides are antimicrobial peptides, having been shown to have bacteriocidal and antifungal activities. Mutations in this gene have been implicated in autosomal dominant Alzheimer disease and cerebroarterial amyloidosis (cerebral amyloid angiopathy). Multiple transcript variants encoding several different isoforms have been found for this gene. This antibody does not cross-react with Mouse beta Amyloid 1-42.

**Conjugate:** Biotin-conjugated

**Immunogen:** Synthetic peptide within Human beta Amyloid 1-42 peptide.

**Subcellular location:** Cell membrane, Membrane, Perikaryon, Cell projection, growth cone, Membrane, clathrin-coated pit, Early endosome, Cytoplasmic vesicle.

**Database links:** SwissProt: P05067 Human

**Recommended Dilutions:**

**ELISA(Det)**

Use at an assay dependent concentration. Can be paired for Sandwich ELISA with Rabbit monoclonal [PSH02-83] to Human beta Amyloid 1-42 (Capture) (HA722079). The reference range value is 24.7-2,000 pg/mL.

**Storage Buffer:** PBS (pH7.4), 0.1% BSA, 40% Glycerol. Preservative: 0.05% ProClin300.

**Storage Instruction:** Shipped at 4°C. Store at +4°C short term (1-2 weeks). Store at -20°C long term.

**Purity:** Protein A affinity purified.

Hangzhou Huan Biotechnology Co., Ltd.

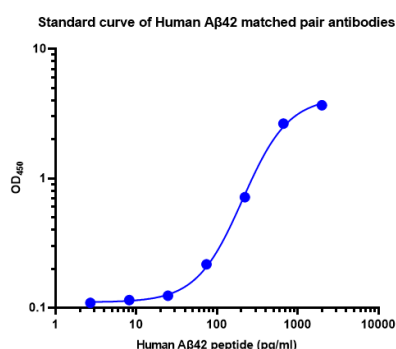
Orders:0086-571-88062880

Technical:0086-571-89986345

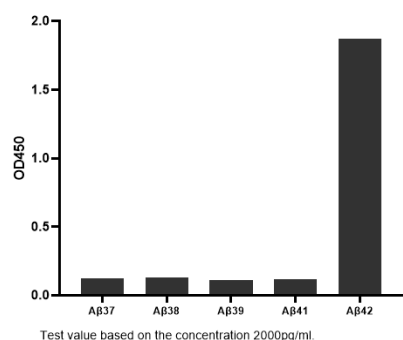
Service mail:support@huabio.cn

华安生物  
HUABIO  
www.huabio.cn

## Images

**Fig1:** Sandwich ELISA analysis of Human A $\beta$ 42 matched pair antibodies

Elisa assay was performed by coating wells of a 96-well plate with 100  $\mu$ l per well of capture antibody HA722079 diluted in carbonate/bicarbonate buffer, at a concentration of 5  $\mu$ g/ml overnight at 4 $^{\circ}$ C. Wells of the plate were washed, blocked with 150  $\mu$ l 0.05% tween-20 1% BSA blocking buffer, and incubated with serial diluted human A $\beta$ 42 protein (HA210499) starting from 2000 pg/ml to 0 pg/ml and detect antibody (HA722293, 0.2  $\mu$ g/ml) for 1 hour at 30 $^{\circ}$ C with shaking. Then the plate was washed and incubated with 100  $\mu$ l per well of SA-HRP for 0.5 hour at 30 $^{\circ}$ C with shaking. Detection was performed using an Ultra TMB Substrate for 10 minutes at room temperature in the dark. The reaction was stopped with sulfuric acid and absorbances were read on a spectrophotometer at 450 nm.

**Fig2:** Sandwich ELISA analysis of mouse A $\beta$ 37, A $\beta$ 38, A $\beta$ 39, A $\beta$ 41, A $\beta$ 42 matched pair antibodies

Elisa assay was performed by coating wells of a 96-well plate with 100  $\mu$ l per well of capture antibody (HA722079) diluted in carbonate/bicarbonate buffer, at a concentration of 5  $\mu$ g/ml overnight at 4 $^{\circ}$ C. Wells of the plate were washed, blocked with 150  $\mu$ l 0.05% tween-20 1% BSA blocking buffer, and incubated with serial diluted mouse A $\beta$ 37, A $\beta$ 38, A $\beta$ 39, A $\beta$ 41, A $\beta$ 42 protein starting with 2000 pg/ml and detect antibody (HA722080, Biotin, 0.2  $\mu$ g/ml) for 1 hour at 30 $^{\circ}$ C with shaking. Then the plate was washed and incubated with 100  $\mu$ l per well of SA-HRP for 0.5 hour at 30 $^{\circ}$ C with shaking. Detection was performed using an Ultra TMB Substrate for 10 minutes at room temperature in the dark. The reaction was stopped with sulfuric acid and absorbances were read on a spectrophotometer at 450 nm.

**Note:** All products are "FOR RESEARCH USE ONLY AND ARE NOT INTENDED FOR DIAGNOSTIC OR THERAPEUTIC USE".

## Background References

1. Janelidze S et al. Head-to-Head Comparison of 8 Plasma Amyloid- $\beta$  42/40 Assays in Alzheimer Disease. JAMA Neurol. 2021 Nov

Hangzhou Huan Biotechnology Co., Ltd.

Orders:0086-571-88062880

Technical:0086-571-89986345

Service mail:support@huabio.cn

华安生物  
HUABIO  
www.huabio.cn