

Anti-GGT1 Antibody [JE38-79]

HA722214



Product Type:	Recombinant Rabbit monoclonal IgG, primary antibodies
Species reactivity:	Human
Applications:	WB, IHC-P
Molecular Wt:	Predicted band size: 61 kDa
Clone number:	JE38-79

Description: Gamma-glutamyltransferase 1 (GGT1), also known as CD224 (Cluster of Differentiation 224), is a human gene. Human gamma-glutamyltransferase catalyzes the transfer of the glutamyl moiety of glutathione to a variety of amino acids and dipeptide acceptors. This heteroduplex enzyme is composed of a heavy chain and a light chain, which are derived from a single precursor protein, and is present in tissues involved in absorption and secretion. This enzyme is a member of the gamma-glutamyltransferase protein family, of which many members have not yet been fully characterized. This gene encodes several transcript variants; studies suggest that many transcripts of this gene family may be non-functional or represent pseudogenes. The functional transcripts which have been fully characterized have been grouped and classified as type I gamma-glutamyltransferase. Complex splicing events may take place in a tissue-specific manner, resulting in marked dissimilarity in the 5' UTRs. Several 5' UTR transcript variants of the type I gene have been identified in different tissues and cancer cells.

Immunogen: Recombinant protein within Human GGT1 aa 1-100 / 569.

Positive control: HepG2 cell lysate, A549 cell lysate, human liver tissue lysate, human kidney tissue lysate, human kidney tissue.

Subcellular location: Cell membrane.

Database links: SwissProt: P19440 Human

Recommended Dilutions:

WB	1:1,000
IHC-P	1:1,000

Storage Buffer: 1*TBS (pH7.4), 0.05% BSA, 40% Glycerol. Preservative: 0.05% Sodium Azide.

Storage Instruction: Shipped at 4°C. Store at +4°C short term (1-2 weeks). It is recommended to aliquot into single-use upon delivery. Store at -20°C long term.

Purity: Protein A affinity purified.

Hangzhou Huaan Biotechnology Co., Ltd.

Orders:0086-571-88062880

Technical:0086-571-89986345

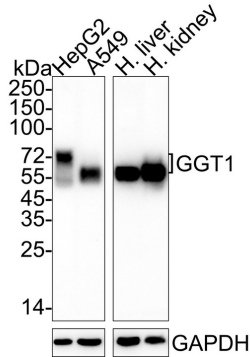
Service mail:support@huabio.cn

 华安生物
HUABIO
www.huabio.cn

Images

Fig1: Western blot analysis of GGT1 on different lysates with Rabbit anti-GGT1 antibody (HA722214) at 1/1,000 dilution.

Lane 1: HepG2 cell lysate (20 µg/Lane)
 Lane 2: A549 cell lysate (20 µg/Lane)
 Lane 3: Human liver tissue lysate (40 µg/Lane)
 Lane 4: Human kidney tissue lysate (40 µg/Lane)



Predicted band size: 61 kDa
 Observed band size: 60-70 kDa

Exposure time: 1 minute; ECL: K1801;

4-20% SDS-PAGE gel.

Proteins were transferred to a PVDF membrane and blocked with 5% NFDM/TBST for 1 hour at room temperature. The primary antibody (HA722214) at 1/1,000 dilution was used in antibody diluent at 4°C overnight. Goat Anti-Rabbit IgG - HRP Secondary Antibody (HA1001) at 1/50,000 dilution was used for 1 hour at room temperature.

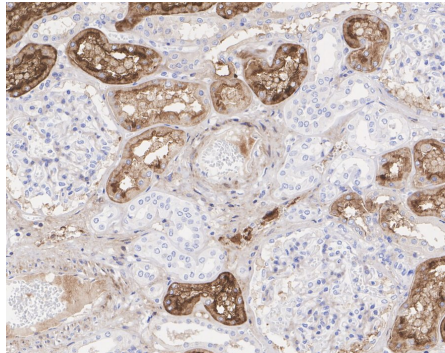


Fig2: Immunohistochemical analysis of paraffin-embedded human kidney tissue with Rabbit anti-GGT1 antibody (HA722214) at 1/1,000 dilution.

The section was pre-treated using heat mediated antigen retrieval with Tris-EDTA buffer (pH 9.0) for 20 minutes. The tissues were blocked in 1% BSA for 20 minutes at room temperature, washed with ddH₂O and PBS, and then probed with the primary antibody (HA722214) at 1/1,000 dilution for 1 hour at room temperature. The detection was performed using an HRP conjugated compact polymer system. DAB was used as the chromogen. Tissues were counterstained with hematoxylin and mounted with DPX.

Note: All products are "FOR RESEARCH USE ONLY AND ARE NOT INTENDED FOR DIAGNOSTIC OR THERAPEUTIC USE".

Background References

- Xu G et al. GGT1 Suppresses the Development of Ferroptosis and Autophagy in Mouse Retinal Ganglion Cell Through Targeting GCLC. Eye Brain. 2023 Nov

Hangzhou Huaan Biotechnology Co., Ltd.

Orders:0086-571-88062880

Technical:0086-571-89986345

Service mail:support@huabio.cn

华安生物
 HUABIO
 www.huabio.cn