

Anti-SMCHD1 Antibody [JE34-29]

HA722141



Product Type:	Recombinant Rabbit monoclonal IgG, primary antibodies
Species reactivity:	Human
Applications:	WB, IHC-P
Molecular Wt:	Predicted band size: 226 kDa
Clone number:	JE34-29

Description: Structural Maintenance of Chromosomes flexible Hinge Domain Containing 1 (SMCHD1) is a protein that in humans is encoded by the SMCHD1 gene. Mutations in SMCHD1 are causative for development of facioscapulohumeral muscular dystrophy type 2 (FSHD2) and Bosma arhinia microphthalmia syndrome (BAMS). Without maternal SMCHD1 in the egg cell, children bear with altered skeletal structures.

Immunogen: Recombinant fragment within Human SMCHD1 aa 1800-2000.

Positive control: 293T cell lysate, HepG2 cell lysate, HeLa cell lysate, U-87 MG cell lysate, U-2 OS cell lysate, human breast cancer tissue, human testis tissue, human tonsil tissue.

Subcellular location: Chromosome.

Database links: SwissProt: A6NHR9 Human

Recommended Dilutions:

WB	1:1,000
IHC-P	1:200

Storage Buffer: 1*TBS (pH7.4), 0.05% BSA, 40% Glycerol. Preservative: 0.05% Sodium Azide.

Storage Instruction: Shipped at 4°C. Store at +4°C short term (1-2 weeks). It is recommended to aliquot into single-use upon delivery. Store at -20°C long term.

Purity: Protein A affinity purified.

Hangzhou Huaan Biotechnology Co., Ltd.

Orders:0086-571-88062880

Technical:0086-571-89986345

Service mail:support@huabio.cn

 华安生物
HUABIO
www.huabio.cn

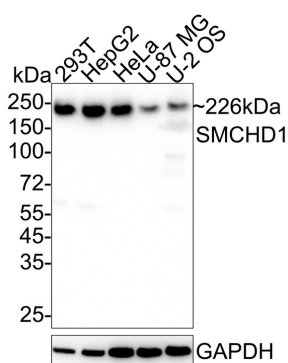


Fig1: Western blot analysis of SMCHD1 on different lysates with Rabbit anti-SMCHD1 antibody (HA722141) at 1/1,000 dilution.

Lane 1: 293T cell lysate
 Lane 2: HepG2 cell lysate
 Lane 3: HeLa cell lysate
 Lane 4: U-87 MG cell lysate
 Lane 5: U-2 OS cell lysate

Lysates/proteins at 20 μ g/Lane.

Predicted band size: 226 kDa
 Observed band size: 226 kDa

Exposure time: 30 seconds; ECL: K1801;

4-20% SDS-PAGE gel.

Proteins were transferred to a PVDF membrane and blocked with 5% NFDM/TBST for 1 hour at room temperature. The primary antibody (HA722141) at 1/1,000 dilution was used in 5% NFDM/TBST at 4°C overnight. Goat Anti-Rabbit IgG - HRP Secondary Antibody (HA1001) at 1/50,000 dilution was used for 1 hour at room temperature.

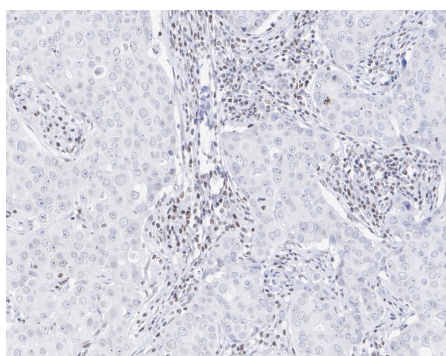


Fig2: Immunohistochemical analysis of paraffin-embedded human breast cancer tissue with Rabbit anti-SMCHD1 antibody (HA722141) at 1/200 dilution.

The section was pre-treated using heat mediated antigen retrieval with sodium citrate buffer (pH 6.0) (high pressure) for 2 minutes. The tissues were blocked in 1% BSA for 20 minutes at room temperature, washed with ddH₂O and PBS, and then probed with the primary antibody (HA722141) at 1/200 dilution for 1 hour at room temperature. The detection was performed using an HRP conjugated compact polymer system. DAB was used as the chromogen. Tissues were counterstained with hematoxylin and mounted with DPX.

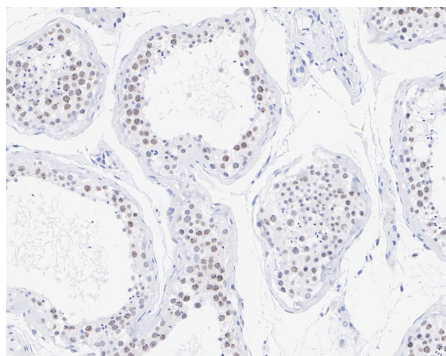


Fig3: Immunohistochemical analysis of paraffin-embedded human testis tissue with Rabbit anti-SMCHD1 antibody (HA722141) at 1/200 dilution.

The section was pre-treated using heat mediated antigen retrieval with sodium citrate buffer (pH 6.0) (high pressure) for 2 minutes. The tissues were blocked in 1% BSA for 20 minutes at room temperature, washed with ddH₂O and PBS, and then probed with the primary antibody (HA722141) at 1/200 dilution for 1 hour at room temperature. The detection was performed using an HRP conjugated compact polymer system. DAB was used as the chromogen. Tissues were counterstained with hematoxylin and mounted with DPX.

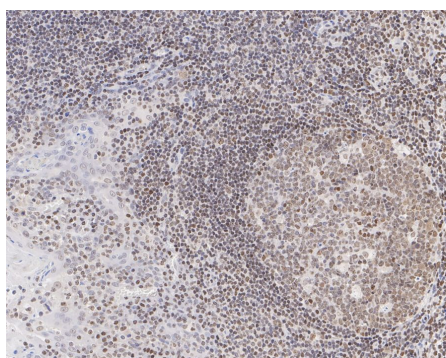


Fig4: Immunohistochemical analysis of paraffin-embedded human tonsil tissue with Rabbit anti-SMCHD1 antibody (HA722141) at 1/200 dilution.

The section was pre-treated using heat mediated antigen retrieval with sodium citrate buffer (pH 6.0) (high pressure) for 2 minutes. The tissues were blocked in 1% BSA for 20 minutes at room temperature, washed with ddH₂O and PBS, and then probed with the primary antibody (HA722141) at 1/200 dilution for 1 hour at room temperature. The detection was performed using an HRP conjugated compact polymer system. DAB was used as the chromogen. Tissues were counterstained with hematoxylin and mounted with DPX.

Note: All products are "FOR RESEARCH USE ONLY AND ARE NOT INTENDED FOR DIAGNOSTIC OR THERAPEUTIC USE".

Background References

1. Gurzau AD et al. Relating SMCHD1 structure to its function in epigenetic silencing. *Biochem Soc Trans.* 2020 Aug
2. Gurzau AD et al. SMCHD1's ubiquitin-like domain is required for N-terminal dimerization and chromatin localization. *Biochem J.* 2021 Jul

Hangzhou Huaan Biotechnology Co., Ltd.

Orders:0086-571-88062880

Technical:0086-571-89986345

Service mail:support@huabio.cn

华安生物
HUABIO
www.huabio.cn