

## Anti-Human CRP Antibody [PSH04-25] - BSA and Azide free (Capture)

# HA722108



<b>Product Type:</b>	Recombinant Rabbit monoclonal IgG, primary antibodies
<b>Species reactivity:</b>	Human, Dog, Cynomolgus monkey
<b>Applications:</b>	ELISA(Cap)
<b>Molecular Wt:</b>	Predicted band size: 25.0 kDa
<b>Clone number:</b>	PSH04-25

**Description:** C-reactive protein (CRP) is an annular (ring-shaped) pentameric protein found in blood plasma, whose circulating concentrations rise in response to inflammation. It is an acute-phase protein of hepatic origin that increases following interleukin-6 secretion by macrophages and T cells. Its physiological role is to bind to lysophosphatidylcholine expressed on the surface of dead or dying cells (and some types of bacteria) in order to activate the complement system via C1q. CRP is synthesized by the liver in response to factors released by macrophages and fat cells (adipocytes). It is a member of the pentraxin family of proteins. It is not related to C-peptide (insulin) or protein C (blood coagulation). C-reactive protein was the first pattern recognition receptor (PRR) to be identified.

**Immunogen:** Recombinant protein within Human CRP aa 19-224 (P02741).

**Positive control:** Recombinant Human CRP protein (HA210648).

**Subcellular location:** Secreted.

**Database links:** SwissProt: P02741 Human

**Recommended Dilutions:**

**ELISA(Cap)** Use at an assay dependent concentration. Can be paired for Sandwich ELISA with Rabbit monoclonal [PSH04-26] to Human CRP (Detector) (HA722109) and recombinant standard Human CRP protein (HA210648). The reference range value is 617-50000 pg/ml.

**Storage Buffer:** PBS (pH7.4).

**Storage Instruction:** Store at +4°C after thawing. Aliquot store at -20°C. Avoid repeated freeze / thaw cycles.

**Purity:** Protein A affinity purified.

Hangzhou Huan Biotechnology Co., Ltd.

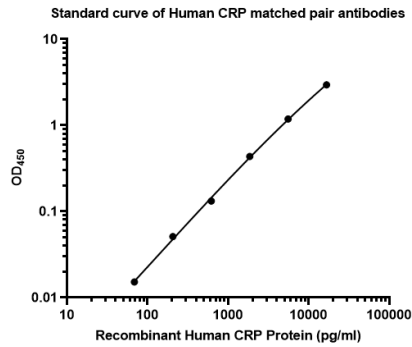
Orders:0086-571-88062880

Technical:0086-571-89986345

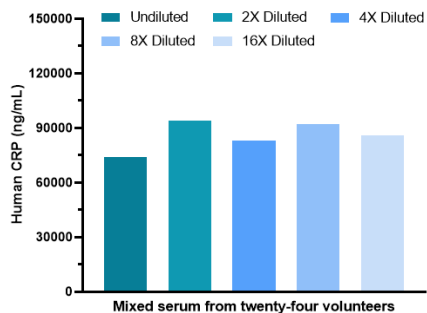
Service mail:support@huabio.cn

  
www.huabio.cn

## Images

**Fig1:** Sandwich ELISA analysis of Human CRP matched pair antibodies

Elisa assay was performed by coating wells of a 96-well plate with 100  $\mu$ l per well of capture antibody (HA722108) diluted in carbonate/bicarbonate buffer, at a concentration of 2  $\mu$ g/ml overnight at 4°C. Wells of the plate were washed, blocked with 150  $\mu$ l 0.05% tween-20 1% BSA blocking buffer, and incubated with serial diluted Recombinant Human CRP protein (HA210648) starting from 50,000 pg/ml to 0 pg/ml and detect antibody (HA722109) (Biotin-conjugated, 0.2  $\mu$ g/ml) for 1 hour at 30°C with shaking. Then the plate was washed and incubated with 100  $\mu$ l per well of SA-HRP for 0.5 hour at 30°C with shaking. Detection was performed using an Ultra TMB Substrate for 10 minutes at room temperature in the dark. The reaction was stopped with sulfuric acid and absorbances were read on a spectrophotometer at 450 nm.

**Fig2:** The concentrations of CRP were interpolated from the CRP standard curves and corrected for sample dilution. Undiluted sample is serum 1: 200,000. The mean CRP concentration was determined to be 85,871 ng/ml in mixed serum from twenty-four volunteers.

**Note:** All products are "FOR RESEARCH USE ONLY AND ARE NOT INTENDED FOR DIAGNOSTIC OR THERAPEUTIC USE".

## Background References

1. Zhu M et al. C-reactive protein and cancer risk: a pan-cancer study of prospective cohort and Mendelian randomization analysis. BMC Med. 2022 Sep
2. Pathak A et al. Evolution of C-Reactive Protein. Front Immunol. 2019 Apr

Hangzhou Huaan Biotechnology Co., Ltd.

Orders:0086-571-88062880

Technical:0086-571-89986345

Service mail:support@huabio.cn

华安生物  
HUABIO  
www.huabio.cn