

Anti-CENPE Antibody [PSH03-54]

HA722013



Product Type:	Recombinant Rabbit monoclonal IgG, primary antibodies
Species reactivity:	Human
Applications:	WB
Molecular Wt:	Predicted band size: 316 kDa
Clone number:	PSH03-54

Description: Centromere-associated protein E is a protein that in humans is encoded by the CENPE gene. Centromere-associated protein E is a kinesin-like motor protein that accumulates in the G2 phase of the cell cycle. Unlike other centromere-associated proteins, it is not present during interphase and first appears at the centromere region of chromosomes during prometaphase. CENPE is proposed to be one of the motors responsible for mammalian chromosome movement and/or spindle elongation. CENPE is also called Kinesin-7. Mutations in CENPE result in autosomal recessive primary microcephaly type 13, which includes skeletal abnormalities and immunodeficiency.

Immunogen: Recombinant protein within human CENPE aa 1-400 / 2,701.

Positive control: HeLa cell lysate, K-562 cell lysate, HEK-293 cell lysate.

Subcellular location: Chromosome, centromere, kinetochore, Cytoplasm, cytoskeleton, spindle.

Database links: SwissProt: Q02224 Human

Recommended Dilutions:

WB 1:1,000

Storage Buffer: PBS (pH7.4), 0.1% BSA, 40% Glycerol. Preservative: 0.05% Sodium Azide.

Storage Instruction: Shipped at 4°C. Store at +4°C short term (1-2 weeks). It is recommended to aliquot into single-use upon delivery. Store at -20°C long term.

Purity: Protein A affinity purified.

Hangzhou Huaan Biotechnology Co., Ltd.

Orders:0086-571-88062880

Technical:0086-571-89986345

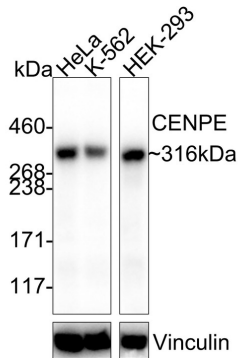
Service mail:support@huabio.cn

 华安生物
HUABIO
www.huabio.cn

Images

Fig1: Western blot analysis of CENPE on different lysates with Rabbit anti-CENPE antibody (HA722013) at 1/1,000 dilution.

Lane 1: HeLa cell lysate
Lane 2: K-562 cell lysate
Lane 3: HEK-293 cell lysate



Lysates/proteins at 20 µg/Lane.

Predicted band size: 316 kDa
Observed band size: 316 kDa

Exposure time: 43 seconds;

3-8% SDS-PAGE gel.

Proteins were transferred to a PVDF membrane and blocked with 5% NFDM/TBST for 1 hour at room temperature. The primary antibody (HA722013) at 1/1,000 dilution was used in 5% NFDM/TBST at 4°C overnight. Goat Anti-Rabbit IgG - HRP Secondary Antibody (HA1001) at 1/50,000 dilution was used for 1 hour at room temperature.

Note: All products are "FOR RESEARCH USE ONLY AND ARE NOT INTENDED FOR DIAGNOSTIC OR THERAPEUTIC USE".

Background References

1. Fang X et al. CENPE contributes to pulmonary vascular remodeling in pulmonary hypertension. *Biochem Biophys Res Commun.* 2021 Jun
2. Shi M et al. Lin28A/CENPE Promoting the Proliferation and Chemoresistance of Acute Myeloid Leukemia. *Front Oncol.* 2021 Nov

Hangzhou Huaan Biotechnology Co., Ltd.

Orders:0086-571-88062880

Technical:0086-571-89986345

Service mail:support@huabio.cn

华安生物
HUABIO
www.huabio.cn