

Anti-Lyn Antibody [JE44-75]

HA721991



Product Type:	Recombinant Rabbit monoclonal IgG, primary antibodies
Species reactivity:	Human, Mouse, Rat
Applications:	WB, FC
Molecular Wt:	Predicted band size: 59 kDa
Clone number:	JE44-75

Description: Tyrosine-protein kinase Lyn is a protein that in humans is encoded by the LYN gene. Lyn is a member of the Src family of protein tyrosine kinases, which is mainly expressed in hematopoietic cells, in neural tissues liver, and adipose tissue. In various hematopoietic cells, Lyn has emerged as a key enzyme involved in the regulation of cell activation. In these cells, a small amount of LYN is associated with cell surface receptor proteins, including the B cell antigen receptor (BCR), CD40, or CD19. The abbreviation Lyn is derived from Lck/Yes novel tyrosine kinase, Lck and Yes also being members of the Src kinase family.

Immunogen: Synthetic peptide within Human Lyn aa 1-100.

Positive control: Ramos cell lysate, A431 cell lysate, Jurkat cell lysate, THP-1 cell lysate, Raji cell lysate, K-562 cell lysate, U-937 cell lysate, mouse lung tissue lysate, rat lung tissue lysate, A431.

Subcellular location: Cell membrane, Nucleus, Cytoplasm, perinuclear region, Golgi apparatus, Membrane.

Database links: SwissProt: P07948 Human | P25911 Mouse | Q07014 Rat

Recommended Dilutions:

WB	1:1,000-1:2,000
FC	1:1,000

Storage Buffer: 1*TBS (pH7.4), 0.05% BSA, 40% Glycerol. Preservative: 0.05% Sodium Azide.

Storage Instruction: Shipped at 4°C. Store at +4°C short term (1-2 weeks). It is recommended to aliquot into single-use upon delivery. Store at -20°C long term.

Purity: Protein A affinity purified.

Hangzhou Huaan Biotechnology Co., Ltd.

Orders:0086-571-88062880

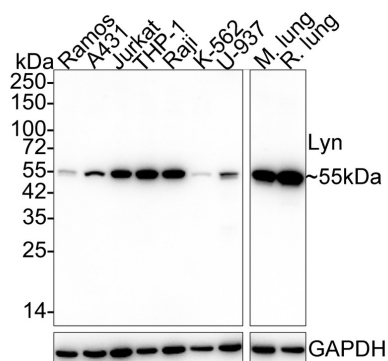
Technical:0086-571-89986345

Service mail:support@huabio.cn

 华安生物
HUABIO
www.huabio.cn

Images

Fig1: Western blot analysis of Lyn on different lysates with Rabbit anti-Lyn antibody (HA721991) at 1/1,000 dilution.



Lane 1: Ramos cell lysate (15 µg/Lane)

Lane 2: A431 cell lysate (15 µg/Lane)

Lane 3: Jurkat cell lysate (15 µg/Lane)

Lane 4: THP-1 cell lysate (15 µg/Lane)

Lane 5: Raji cell lysate (15 µg/Lane)

Lane 6: K-562 cell lysate (15 µg/Lane)

Lane 7: U-937 cell lysate (15 µg/Lane)

Lane 8: Mouse lung tissue lysate (30 µg/Lane)

Lane 9: Rat lung tissue lysate (30 µg/Lane)

Predicted band size: 59 kDa

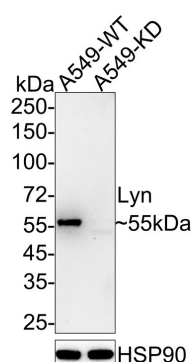
Observed band size: 55 kDa

Exposure time: 30 seconds;

4-20% SDS-PAGE gel.

Proteins were transferred to a PVDF membrane and blocked with 5% NFDM/TBST for 1 hour at room temperature. The primary antibody (HA721991) at 1/1,000 dilution was used in 5% NFDM/TBST at 4°C overnight. Goat Anti-Rabbit IgG - HRP Secondary Antibody (HA1001) at 1/50,000 dilution was used for 1 hour at room temperature.

Fig2: Western blot analysis of Lyn on different lysates with Rabbit anti-Lyn antibody (HA721991) at 1/2,000 dilution.



Lane 1: A549-si NT cell lysate

Lane 2: A549-si Lyn cell lysate

Lysates/proteins at 10 µg/Lane.

Predicted band size: 59 kDa

Observed band size: 55 kDa

Exposure time: 1 minute; ECL: K1802;

4-20% SDS-PAGE gel.

Proteins were transferred to a PVDF membrane and blocked with 5% NFDM/TBST for 1 hour at room temperature. The primary antibody (HA721991) at 1/2,000 dilution was used in 5% NFDM/TBST at 4°C overnight. Goat Anti-Rabbit IgG - HRP Secondary Antibody (HA1001) at 1/50,000 dilution was used for 1 hour at room temperature.

Hangzhou Huaan Biotechnology Co., Ltd.

Orders:0086-571-88062880

Technical:0086-571-89986345

Service mail:support@huabio.cn

华安生物
HUABIO
www.huabio.cn

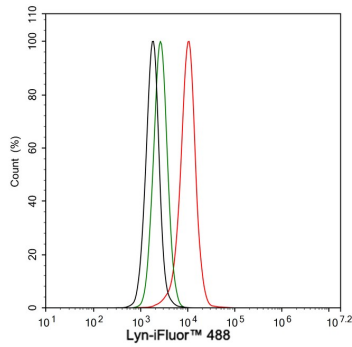


Fig3: Flow cytometric analysis of A431 cells labeling Lyn.

Cells were fixed and permeabilized. Then stained with the primary antibody (HA721991, 1 μ g/mL) (red) compared with Rabbit IgG Isotype Control (green). After incubation of the primary antibody at +4 $^{\circ}$ C for an hour, the cells were stained with a iFluor™ 488 conjugate-Goat anti-Rabbit IgG Secondary antibody (HA1121) at 1/1,000 dilution for 30 minutes at +4 $^{\circ}$ C. Unlabelled sample was used as a control (cells without incubation with primary antibody; black).

Note: All products are "FOR RESEARCH USE ONLY AND ARE NOT INTENDED FOR DIAGNOSTIC OR THERAPEUTIC USE".

Background References

1. Brian BF 4th et al. The Src-family Kinase Lyn in Immunoreceptor Signaling. *Endocrinology*. 2021 Oct
2. Fattet L et al. Matrix Rigidity Controls Epithelial-Mesenchymal Plasticity and Tumor Metastasis via a Mechanoresponsive EPHA2/LYN Complex. *Dev Cell*. 2020 Aug

Hangzhou Huaan Biotechnology Co., Ltd.

Orders:0086-571-88062880

Technical:0086-571-89986345

Service mail:support@huabio.cn

华安生物
HUABIO
www.huabio.cn