

Anti-IMP3 Antibody [JE34-04]

HA721990



Product Type:	Recombinant Rabbit monoclonal IgG, primary antibodies
Species reactivity:	Human
Applications:	WB, IF-Cell, IHC-P
Molecular Wt:	Predicted band size: 64 kDa
Clone number:	JE34-04

Description: Insulin-like growth factor 2 mRNA-binding protein 3 is a protein that in humans is encoded by the IGF2BP3 gene. The protein encoded by this gene is primarily found in the nucleolus, where it can bind to the 5' UTR of the insulin-like growth factor II leader 3 mRNA and may repress translation of insulin-like growth factor II during late development. The encoded protein contains several KH domains, which are important in RNA binding and are known to be involved in RNA synthesis and metabolism. A pseudogene exists on chromosome 7, and there are putative pseudogenes on other chromosomes.

Immunogen: Recombinant protein within Human IMP3 aa 1-250 / 579.

Positive control: HeLa cell lysate, Jurkat cell lysate, MDA-MB-231 cell lysate, K-562 cell lysate, HT-29 cell lysate, HeLa, human lung adenocarcinoma tissue, human placenta tissue, human tonsil tissue.

Subcellular location: Nucleus, Cytoplasm, P-body, Stress granule.

Database links: SwissProt: O00425 Human

Recommended Dilutions:

WB	1:1,000-1:2,000
IF-Cell	1:100
IHC-P	1:200

Storage Buffer: 1*TBS (pH7.4), 0.05% BSA, 40% Glycerol. Preservative: 0.05% Sodium Azide.

Storage Instruction: Shipped at 4°C. Store at +4°C short term (1-2 weeks). It is recommended to aliquot into single-use upon delivery. Store at -20°C long term.

Purity: Protein A affinity purified.

Hangzhou Huaan Biotechnology Co., Ltd.

Orders:0086-571-88062880

Technical:0086-571-89986345

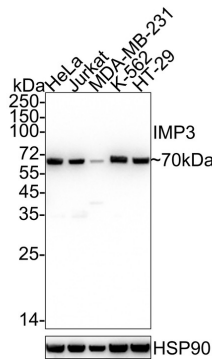
Service mail:support@huabio.cn

 华安生物
HUABIO
www.huabio.cn

Images

Fig1: Western blot analysis of IMP3 on different lysates with Rabbit anti-IMP3 antibody (HA721990) at 1/1,000 dilution.

Lane 1: HeLa cell lysate
 Lane 2: Jurkat cell lysate
 Lane 3: MDA-MB-231 cell lysate
 Lane 4: K-562 cell lysate
 Lane 5: HT-29 cell lysate



Lysates/proteins at 20 µg/Lane.

Predicted band size: 64 kDa
 Observed band size: 70 kDa

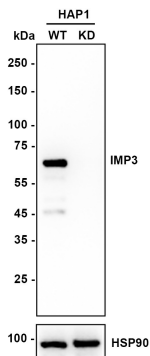
Exposure time: 14 seconds; ECL: K1801;

4-20% SDS-PAGE gel.

Proteins were transferred to a PVDF membrane and blocked with 5% NFDm/TBST for 1 hour at room temperature. The primary antibody (HA721990) at 1/1,000 dilution was used in 5% NFDm/TBST at 4°C overnight. Goat Anti-Rabbit IgG - HRP Secondary Antibody (HA1001) at 1/50,000 dilution was used for 1 hour at room temperature.

Fig2: Western blot analysis of IMP3 on different lysates with Rabbit anti-IMP3 antibody (HA721990) at 1/2,000 dilution.

Lane 1: HAP1-parental cell lysate
 Lane 2: HAP1-IMP3 KD cell lysate



Lysates/proteins at 10 µg/Lane.

Predicted band size: 64 kDa
 Observed band size: 70 kDa

Exposure time: 12 seconds; ECL: K1801;

4-20% SDS-PAGE gel.

Proteins were transferred to a PVDF membrane and blocked with 5% NFDm/TBST for 1 hour at room temperature. The primary antibody (HA721990) at 1/2,000 dilution was used in K1803 at 4°C overnight. Goat Anti-Rabbit IgG - HRP Secondary Antibody (HA1001) at 1/50,000 dilution was used for 1 hour at room temperature.

Hangzhou Huaan Biotechnology Co., Ltd.

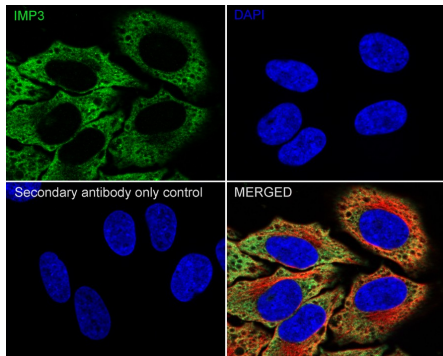
Orders:0086-571-88062880

Technical:0086-571-89986345

Service mail:support@huabio.cn

华安生物
 HUABIO
 www.huabio.cn

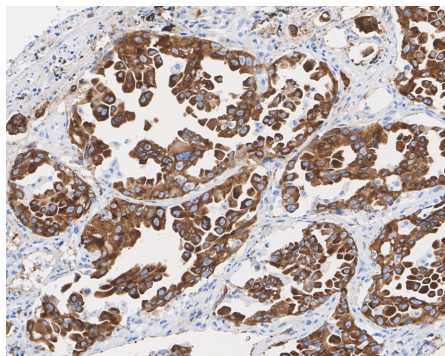
Fig3: Immunocytochemistry analysis of HeLa cells labeling IMP3 with Rabbit anti-IMP3 antibody (HA721990) at 1/100 dilution.



Cells were fixed in 4% paraformaldehyde for 20 minutes at room temperature, permeabilized with 0.1% Triton X-100 in PBS for 5 minutes at room temperature, then blocked with 1% BSA in 10% negative goat serum for 1 hour at room temperature. Cells were then incubated with Rabbit anti-IMP3 antibody (HA721990) at 1/100 dilution in 1% BSA in PBST overnight at 4 °C. Goat Anti-Rabbit IgG H&L (iFluor™ 488, HA1121) was used as the secondary antibody at 1/1,000 dilution. PBS instead of the primary antibody was used as the secondary antibody only control. Nuclear DNA was labelled in blue with DAPI.

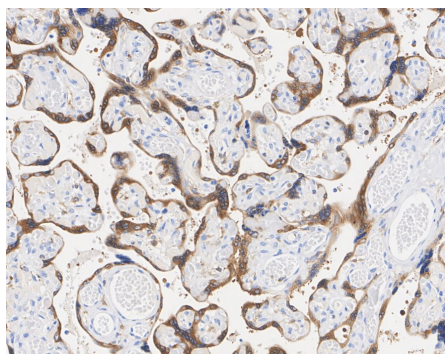
Beta tubulin (M1305-2, red) was stained at 1/100 dilution overnight at +4 °C. Goat Anti-Mouse IgG H&L (iFluor™ 594, HA1126) was used as the secondary antibody at 1/1,000 dilution.

Fig4: Immunohistochemical analysis of paraffin-embedded human lung adenocarcinoma tissue with Rabbit anti-IMP3 antibody (HA721990) at 1/200 dilution.



The section was pre-treated using heat mediated antigen retrieval with sodium citrate buffer (pH 6.0) (high pressure) for 2 minutes. The tissues were blocked in 1% BSA for 20 minutes at room temperature, washed with ddH₂O and PBS, and then probed with the primary antibody (HA721990) at 1/200 dilution for 1 hour at room temperature. The detection was performed using an HRP conjugated compact polymer system. DAB was used as the chromogen. Tissues were counterstained with hematoxylin and mounted with DPX.

Fig5: Immunohistochemical analysis of paraffin-embedded human placenta tissue with Rabbit anti-IMP3 antibody (HA721990) at 1/200 dilution.



The section was pre-treated using heat mediated antigen retrieval with sodium citrate buffer (pH 6.0) (high pressure) for 2 minutes. The tissues were blocked in 1% BSA for 20 minutes at room temperature, washed with ddH₂O and PBS, and then probed with the primary antibody (HA721990) at 1/200 dilution for 1 hour at room temperature. The detection was performed using an HRP conjugated compact polymer system. DAB was used as the chromogen. Tissues were counterstained with hematoxylin and mounted with DPX.

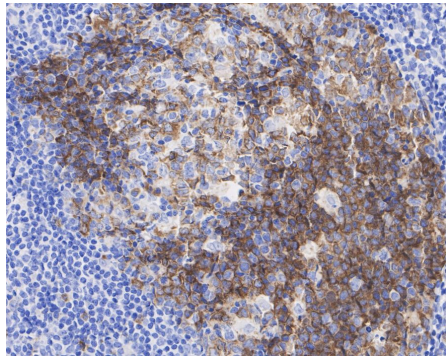


Fig6: Immunohistochemical analysis of paraffin-embedded human tonsil tissue with Rabbit anti-IMP3 antibody (HA721990) at 1/200 dilution.

The section was pre-treated using heat mediated antigen retrieval with Tris-EDTA buffer (pH 9.0) for 20 minutes. The tissues were blocked in 1% BSA for 20 minutes at room temperature, washed with ddH₂O and PBS, and then probed with the primary antibody (HA721990) at 1/200 dilution for 1 hour at room temperature. The detection was performed using an HRP conjugated compact polymer system. DAB was used as the chromogen. Tissues were counterstained with hematoxylin and mounted with DPX.

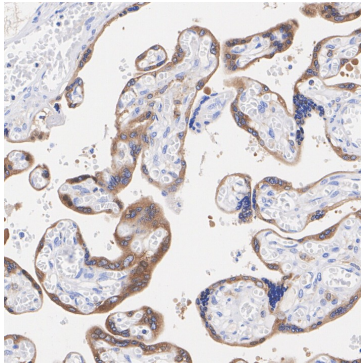


Fig7: Immunohistochemical analysis of paraffin-embedded human placenta tissue with Rabbit anti-IMP3 antibody (HA721990) at 1/200 dilution.

The section was pre-treated using heat mediated antigen retrieval with Tris-EDTA buffer (pH 9.0) for 20 minutes. The tissues were blocked in 1% BSA for 20 minutes at room temperature, washed with ddH₂O and PBS, and then probed with the primary antibody (HA721990) at 1/200 dilution for 1 hour at room temperature. The detection was performed using an HRP conjugated compact polymer system. DAB was used as the chromogen. Tissues were counterstained with hematoxylin and mounted with DPX.

Note: All products are "FOR RESEARCH USE ONLY AND ARE NOT INTENDED FOR DIAGNOSTIC OR THERAPEUTIC USE".

Background References

1. Wan W et al. METTL3/IGF2BP3 axis inhibits tumor immune surveillance by upregulating N⁶-methyladenosine modification of PD-L1 mRNA in breast cancer. *Mol Cancer*. 2022 Feb
2. Pan Z et al. EWSR1-induced circNEIL3 promotes glioma progression and exosome-mediated macrophage immunosuppressive polarization via stabilizing IGF2BP3. *Mol Cancer*. 2022 Jan

Hangzhou Huan Biotechnology Co., Ltd.

Orders:0086-571-88062880

Technical:0086-571-89986345

Service mail:support@huabio.cn

华安生物
HUABIO
www.huabio.cn