

Anti-Phospho-MST1/MST2 (T180 + T183) Antibody [JE46-64] HA721737



Product Type:	Recombinant Rabbit monoclonal IgG, primary antibodies
Species reactivity:	Human, Mouse, Rat
Applications:	WB
Molecular Wt:	Predicted band size: 56 kDa
Clone number:	JE46-64

Description:	The human serine/threonine kinase, mammalian STE20 like kinase (MST), is considerably homologous to the budding yeast kinases, SPS1 and STE20, throughout their kinase domains. When stably expressed in HeLa cells, MST highly sensitizes the cells to death receptor mediated apoptosis by accelerating caspase 3 activation. These findings suggest that MST1 and MST2 play a role in apoptosis both upstream and downstream of caspase activation. MST1 is cleaved and activated by caspases during apoptosis and is capable of inducing apoptotic morphological changes such as chromatin condensation upon overexpression. Mammalian Sterile 20 Like 2 (MST2) is most similar to the previously identified MST1 protein kinase (78% identity, 88% similarity). Northern analysis indicates that MST2 mRNA is expressed at high levels in adult kidney, skeletal and placental tissues and at very low levels in adult heart, lung, liver and brain tissues. An in vitro kinase assay indicates that MST2 can phosphorylate an exogenous substrate, as well as itself, and phospho amino acid analysis indicates that it is a serine/threonine protein kinase.
Immunogen:	Synthetic phosphopeptide corresponding to residues surrounding Thr183 of human MST1 protein.
Positive control:	Ramos treated with 1μM Staurosporine for 1 hour cell lysate, NIH/3T3 treated with 1μM Staurosporine for 3 hour cell lysate, C6 treated with 1μM Staurosporine for 3 hour cell lysate.
Subcellular location:	Cytoplasm, Nucleus.
Database links:	SwissProt: Q13043 Human Q13188 Human Q9JI11 Mouse Q9JI10 Mouse O54748 Rat Entrez Gene: 65189 Rat
Recommended Dilutions:	
WB	1:1,000
Storage Buffer:	1*TBS (pH7.4), 0.05% BSA, 40% Glycerol. Preservative: 0.05% Sodium Azide.
Storage Instruction:	Shipped at 4°C. Store at +4°C short term (1-2 weeks). It is recommended to aliquot into single-use upon delivery. Store at -20°C long term.
Purity:	Protein A affinity purified.

Hangzhou Huaan Biotechnology Co., Ltd.

Orders: 0086-571-88062880

Technical: 0086-571-89986345

Service mail: support@huabio.cn

华安生物
HUABIO
www.huabio.cn

Applications: WB=Western blot IHC-P=Immunohistochemistry (paraffin) IF-Cell=Immunofluorescence (Cell) IF-Tissue=Immunofluorescence (Tissue) FC=Flow cytometry IP=Immunoprecipitation

Images

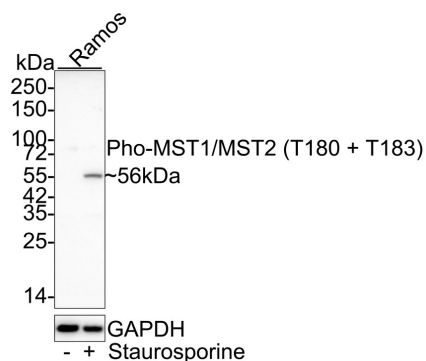


Fig1: Western blot analysis of Phospho-MST1/MST2 (T180 + T183) on different lysates with Rabbit anti-Phospho-MST1/MST2 (T180 + T183) antibody (HA721737) at 1/1,000 dilution.

Lane 1: Ramos cell lysate

Lane 2: Ramos treated with 1 μ M Staurosporine for 1 hour cell lysate

Lysates/proteins at 20 μ g/Lane.

Predicted band size: 56 kDa

Observed band size: 56 kDa

Exposure time: 3 minutes;

4-20% SDS-PAGE gel.

Proteins were transferred to a PVDF membrane and blocked with 5% NFDM/TBST for 1 hour at room temperature. The primary antibody (HA721737) at 1/1,000 dilution was used in 5% NFDM/TBST at 4 $^{\circ}$ C overnight. Goat Anti-Rabbit IgG - HRP Secondary Antibody (HA1001) at 1/50,000 dilution was used for 1 hour at room temperature.

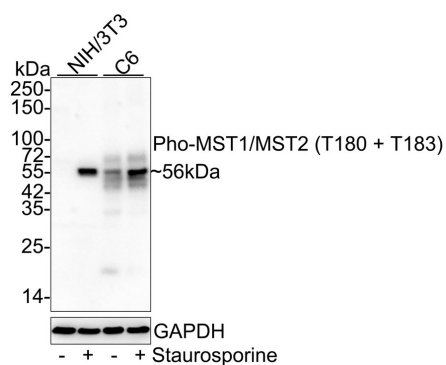
Fig2: Western blot analysis of Phospho-MST1/MST2 (T180 + T183) on different lysates with Rabbit anti-Phospho-MST1/MST2 (T180 + T183) antibody (HA721737) at 1/1,000 dilution.

Lane 1: NIH/3T3 cell lysate

Lane 2: NIH/3T3 treated with 1 μ M Staurosporine for 3 hour cell lysate

Lane 3: C6 cell lysate

Lane 4: C6 treated with 1 μ M Staurosporine for 3 hour cell lysate



Lysates/proteins at 20 μ g/Lane.

Predicted band size: 56 kDa

Observed band size: 56 kDa

Exposure time: 2 minutes 18 seconds;

4-20% SDS-PAGE gel.

Proteins were transferred to a PVDF membrane and blocked with 5% NFDM/TBST for 1 hour at room temperature. The primary antibody (HA721737) at 1/1,000 dilution was used in 5% NFDM/TBST at 4 $^{\circ}$ C overnight. Goat Anti-Rabbit IgG - HRP Secondary Antibody (HA1001) at 1/50,000 dilution was used for 1 hour at room temperature.

Hangzhou Huaan Biotechnology Co., Ltd.

Orders:0086-571-88062880

Technical:0086-571-89986345

Service mail:support@huabio.cn

华安生物
HUABIO
www.huabio.cn

Applications:WB=Western blot IHC-P=Immunohistochemistry (paraffin) IF-Cell=Immunofluorescence (Cell) IF-Tissue=Immunofluorescence (Tissue) FC=Flow cytometry IP=Immunoprecipitation

Note: All products are "FOR RESEARCH USE ONLY AND ARE NOT INTENDED FOR DIAGNOSTIC OR THERAPEUTIC USE".

Background References

1. Liu M et al. Macrophage MST1/2 Disruption Impairs Post-Infarction Cardiac Repair via LTB4. Circ Res. 2021 Oct
2. Ueda Y et al. MST1/2 Balance Immune Activation and Tolerance by Orchestrating Adhesion, Transcription, and Organelle Dynamics in Lymphocytes. Front Immunol. 2020 May

Hangzhou Huaan Biotechnology Co., Ltd.

Orders: 0086-571-88062880

Technical: 0086-571-89986345

Service mail: support@huabio.cn

 华安生物
HUAABIO
www.huabio.cn

Applications: WB=Western blot IHC-P=Immunohistochemistry (paraffin) IF-Cell=Immunofluorescence (Cell) IF-Tissue=Immunofluorescence (Tissue) FC=Flow cytometry IP=Immunoprecipitation