

# Anti-MBD1 Antibody [PSH01-78]

HA721730



<b>Product Type:</b>	Recombinant Rabbit monoclonal IgG, primary antibodies
<b>Species reactivity:</b>	Human, Mouse, Rat
<b>Applications:</b>	WB
<b>Molecular Wt:</b>	Predicted band size: 67 kDa
<b>Clone number:</b>	PSH01-78

**Description:** MBD1 is a member of a family of nuclear proteins related by the presence of a methyl-CpG binding domain (MBD). These proteins are capable of binding specifically to methylated DNA, and some members can also repress transcription from methylated gene promoters. This protein contains multiple domains: MBD at the N-terminus that functions both in binding to methylated DNA and in protein interactions; several CXXC-type zinc finger domains that mediate binding to non-methylated CpG dinucleotides; transcriptional repression domain (TRD) at the C-terminus that is involved in transcription repression and in protein interactions. Numerous alternatively spliced transcript variants encoding different isoforms have been noted for this gene.

**Immunogen:** Recombinant protein within mouse MBD1 aa 1-200 / 636.

**Positive control:** HeLa cell lysate, 293T cell lysate, NIH/3T3 cell lysate, C2C12 cell lysate, human kidney tissue lysate, mouse kidney tissue lysate, mouse brain tissue lysate, mouse testis tissue lysate, mouse lung tissue lysate, rat brain tissue lysate, rat testis tissue lysate.

**Subcellular location:** Nucleus, Nucleus matrix, Nucleus speckle, Chromosome

**Database links:** SwissProt: Q9UIS9 Human | Q9Z2E2 Mouse | Q66HB8 Rat

**Recommended Dilutions:**

**WB** 1:1,000

**Storage Buffer:** PBS (pH7.4), 0.1% BSA, 40% Glycerol. Preservative: 0.05% Sodium Azide.

**Storage Instruction:** Shipped at 4°C. Store at +4°C short term (1-2 weeks). It is recommended to aliquot into single-use upon delivery. Store at -20°C long term.

**Purity:** Protein A affinity purified.

Hangzhou Huaan Biotechnology Co., Ltd.

Orders:0086-571-88062880

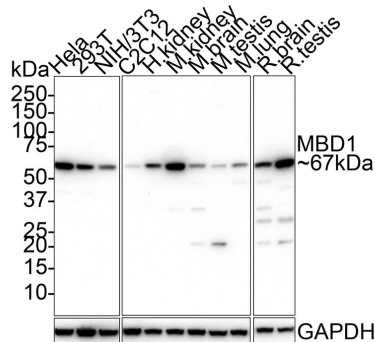
Technical:0086-571-89986345

Service mail:support@huabio.cn

华安生物  
HUABIO  
www.huabio.cn

## Images

**Fig1:** Western blot analysis of MBD1 on different lysates with Rabbit anti-MBD1 antibody (HA721730) at 1/1,000 dilution.



Lane 1: HeLa cell lysate  
 Lane 2: 293T cell lysate  
 Lane 3: NIH/3T3 cell lysate  
 Lane 4: C2C12 cell lysate  
 Lane 5: Human kidney tissue lysate  
 Lane 6: Mouse kidney tissue lysate  
 Lane 7: Mouse brain tissue lysate  
 Lane 8: Mouse testis tissue lysate  
 Lane 9: Mouse lung tissue lysate  
 Lane 10: Rat brain tissue lysate  
 Lane 11: Rat testis tissue lysate

Lysates/proteins at 30 µg/Lane.

Predicted band size: 67 kDa

Observed band size: 67 kDa

Exposure time: 2 minutes 18 seconds;

4-20% SDS-PAGE gel.

Proteins were transferred to a PVDF membrane and blocked with 5% NFDN/TBST for 1 hour at room temperature. The primary antibody (HA721730) at 1/1,000 dilution was used in 5% NFDN/TBST at room temperature for 2 hours. Goat Anti-Rabbit IgG - HRP Secondary Antibody (HA1001) at 1/50,000 dilution was used for 1 hour at room temperature.

**Note:** All products are "FOR RESEARCH USE ONLY AND ARE NOT INTENDED FOR DIAGNOSTIC OR THERAPEUTIC USE".

### Background References

1. Wensheng L, Bo Z, Qiangsheng H, et al. MBD1 promotes the malignant behavior of gallbladder cancer cells and induces chemotherapeutic resistance to gemcitabine. *Cancer Cell Int.* 2019 Sep 9; 19:232.
2. Lyst MJ, Nan X, Stancheva I. Retraction: Regulation of MBD1-mediated transcriptional repression by SUMO and PIAS proteins. *EMBO J.* 2019 Oct 15;38(20): e103220.

Hangzhou Huaan Biotechnology Co., Ltd.

Orders:0086-571-88062880

Technical:0086-571-89986345

Service mail:support@huabio.cn

华安生物  
 HUABIO  
 www.huabio.cn