

Anti-PICALM Antibody [PSH01-64]

HA721707



Product Type:	Recombinant Rabbit monoclonal IgG, primary antibodies
Species reactivity:	Human, Mouse, Rat
Applications:	WB
Molecular Wt:	Predicted band size: 71 kDa
Clone number:	PSH01-64

Description: Cytoplasmic adapter protein that plays a critical role in clathrin-mediated endocytosis which is important in processes such as internalization of cell receptors, synaptic transmission or removal of apoptotic cells. Recruits AP-2 and attaches clathrin triskelions to the cytoplasmic side of plasma membrane leading to clathrin-coated vesicles (CCVs) assembly. Furthermore, regulates clathrin-coated vesicle size and maturation by directly sensing and driving membrane curvature. In addition to binding to clathrin, mediates the endocytosis of small R-SNARES (Soluble NSF Attachment Protein REceptors) between plasma membranes and endosomes including VAMP2, VAMP3, VAMP4, VAMP7 or VAMP8. In turn, PICALM-dependent SNARE endocytosis is required for the formation and maturation of autophagic precursors. Modulates thereby autophagy and the turnover of autophagy substrates such as MAPT/TAU or amyloid precursor protein cleaved C-terminal fragment (APP-CTF).

Immunogen: Recombinant protein within human PICALM aa 1-450.

Positive control: HeLa cell lysate, HepG2 cell lysate, PC-3M cell lysate, HCT 116 cell lysate, 293T cell lysate, Neuro-2a cell lysate, PC-12 cell lysate.

Subcellular location: Cell membrane, Coated pit, Cytoplasmic vesicle, Golgi apparatus, Membrane, Nucleus

Database links: SwissProt: Q13492 Human | Q7M6Y3 Mouse | O55012 Rat

Recommended Dilutions:

WB 1:1,000

Storage Buffer: PBS (pH7.4), 0.1% BSA, 40% Glycerol. Preservative: 0.05% Sodium Azide.

Storage Instruction: Shipped at 4°C. Store at +4°C short term (1-2 weeks). It is recommended to aliquot into single-use upon delivery. Store at -20°C long term.

Purity: Protein A affinity purified.

Hangzhou Huaan Biotechnology Co., Ltd.

Orders:0086-571-88062880

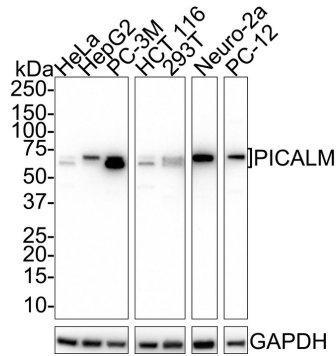
Technical:0086-571-89986345

Service mail:support@huabio.cn

 华安生物
HUABIO
www.huabio.cn

Images

Fig1: Western blot analysis of PICALM on different lysates with Rabbit anti-PICALM antibody (HA721707) at 1/1,000 dilution.



Lane 1: HeLa cell lysate
 Lane 2: HepG2 cell lysate
 Lane 3: PC-3M cell lysate
 Lane 4: HCT 116 cell lysate
 Lane 5: 293T cell lysate
 Lane 6: Neuro-2a cell lysate
 Lane 7: PC-12 cell lysate

Lysates/proteins at 20 µg/Lane.

Predicted band size: 71 kDa
 Observed band size: 65/71 kDa

Exposure time: 3 minutes;

4-20% SDS-PAGE gel.

Proteins were transferred to a PVDF membrane and blocked with 5% NFDM/TBST for 1 hour at room temperature. The primary antibody (HA721707) at 1/1,000 dilution was used in 5% NFDM/TBST at room temperature for 2 hours. Goat Anti-Rabbit IgG - HRP Secondary Antibody (HA1001) at 1/50,000 dilution was used for 1 hour at room temperature.

Note: All products are "FOR RESEARCH USE ONLY AND ARE NOT INTENDED FOR DIAGNOSTIC OR THERAPEUTIC USE".

Background References

1. Moshkanbaryans L., Xue J., Wark J.R., Robinson P.J., Graham M.E. A Novel Sequence in AP180 and CALM Promotes Efficient Clathrin Binding and Assembly. PLoS ONE 11:E0162050-E0162050 (2016)
2. Sahlender D.A., Kozik P., Miller S.E., Peden A.A., Robinson M.S. Uncoupling the functions of CALM in VAMP sorting and clathrin-coated pit formation. PLoS ONE 8:E64514-E64514 (2013)

Hangzhou Huaan Biotechnology Co., Ltd.

Orders:0086-571-88062880

Technical:0086-571-89986345

Service mail:support@huabio.cn

华安生物
 HUABIO
 www.huabio.cn