

# Anti-TRAF3 Antibody [PSH01-30]

HA721654



<b>Product Type:</b>	Recombinant Rabbit monoclonal IgG, primary antibodies
<b>Species reactivity:</b>	Human, Mouse, Rat
<b>Applications:</b>	WB
<b>Molecular Wt:</b>	Predicted band size: 64 kDa
<b>Clone number:</b>	PSH01-30

**Description:** TNF receptor-associated factor (TRAF3) is a protein that in humans is encoded by the TRAF3 gene. The protein encoded by this gene is a member of the TNF receptor associated factor (TRAF) protein family. TRAF proteins associate with, and mediate the signal transduction from, members of the TNF receptor (TNFR) superfamily. This protein participates in the signal transduction of CD40, a TNFR family member important for the activation of the immune response. This protein is found to be a critical component of the lymphotoxin-beta receptor (LTbetaR) signaling complex, which induces NF-kappaB activation and cell death initiated by LTbeta ligation. Epstein-Barr virus-encoded latent infection membrane protein-1 (LMP1) can interact with this and several other members of the TRAF family, which may be essential for the oncogenic effects of LMP1. Three alternatively spliced transcript variants encoding two distinct isoforms have been reported.

**Immunogen:** Recombinant protein within human TRAF3 301-568 / 568.

**Positive control:** TF-1 cell lysate, THP-1 cell lysate, 293T cell lysate, Jurkat cell lysate, A549 cell lysate, RAW264.7 cell lysate, NIH/3T3 cell lysate, mouse brain tissue lysate, rat spleen tissue lysate.

**Subcellular location:** Cytoplasm, Endosome, Mitochondrion.

**Database links:** SwissProt: Q13114 Human | Q60803 Mouse  
Entrez Gene: 362788 Rat

**Recommended Dilutions:**  
**WB** 1:1,000

**Storage Buffer:** PBS (pH7.4), 0.1% BSA, 40% Glycerol. Preservative: 0.05% Sodium Azide.

**Storage Instruction:** Shipped at 4°C. Store at +4°C short term (1-2 weeks). It is recommended to aliquot into single-use upon delivery. Store at -20°C long term.

**Purity:** Protein A affinity purified.

Hangzhou Huaan Biotechnology Co., Ltd.

Orders: 0086-571-88062880

Technical: 0086-571-89986345

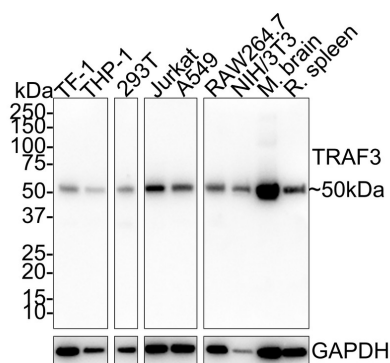
Service mail: support@huabio.cn

华安生物  
HUABIO  
www.huabio.cn

Applications: WB=Western blot IHC-P=Immunohistochemistry (paraffin) IF-Cell=Immunofluorescence (Cell) IF-Tissue=Immunofluorescence (Tissue) FC=Flow cytometry IP=Immunoprecipitation

## Images

**Fig1:** Western blot analysis of TRAF3 on different lysates with Rabbit anti-TRAF3 antibody (HA721654) at 1/1,000 dilution.



Lane 1: TF-1 cell lysate (20 µg/Lane)  
 Lane 2: THP-1 cell lysate (20 µg/Lane)  
 Lane 3: 293T cell lysate (20 µg/Lane)  
 Lane 4: Jurkat cell lysate (20 µg/Lane)  
 Lane 5: A549 cell lysate (20 µg/Lane)  
 Lane 6: RAW264.7 cell lysate (20 µg/Lane)  
 Lane 7: NIH/3T3 cell lysate (20 µg/Lane)  
 Lane 8: Mouse brain tissue lysate (40 µg/Lane)  
 Lane 9: Rat spleen tissue lysate (40 µg/Lane)

Lysates/proteins at 10 µg/Lane.

Predicted band size: 64 kDa

Observed band size: 50 kDa

Exposure time: 1 minute 9 seconds;

4-20% SDS-PAGE gel.

Proteins were transferred to a PVDF membrane and blocked with 5% NFDM/TBST for 1 hour at room temperature. The primary antibody (HA721654) at 1/1,000 dilution was used in 5% NFDM/TBST at room temperature for 2 hours. Goat Anti-Rabbit IgG - HRP Secondary Antibody (HA1001) at 1:50,000 dilution was used for 1 hour at room temperature.

**Note:** All products are "FOR RESEARCH USE ONLY AND ARE NOT INTENDED FOR DIAGNOSTIC OR THERAPEUTIC USE".

### Background References

1. Gao P et al. E3 ligase Nedd4l promotes antiviral innate immunity by catalyzing K29-linked cysteine ubiquitination of TRAF3. Nat Commun. 2021 Feb
2. Sun N et al. TRIM35 mediates protection against influenza infection by activating TRAF3 and degrading viral PB2. Protein Cell. 2020 Dec

Hangzhou Huaan Biotechnology Co., Ltd.

Orders:0086-571-88062880

Technical:0086-571-89986345

Service mail:support@huabio.cn

华安生物  
HUABIO  
www.huabio.cn

Applications:WB=Western blot IHC-P=Immunohistochemistry (paraffin) IF-Cell=Immunofluorescence (Cell) IF-Tissue=Immunofluorescence (Tissue) FC=Flow cytometry IP=Immunoprecipitation