

Anti-TAX1BP1 Antibody [JE34-80]

HA721648



Product Type: Recombinant Rabbit monoclonal IgG, primary antibodies

Species reactivity: Human, Mouse, Rat

Applications: WB, IHC-P

Molecular Wt: Predicted band size: 91 kDa

Clone number: JE34-80

Description: Tax1-binding protein 1 is a protein that in humans is encoded by the TAX1BP1 gene. TAX1BP1 has been shown to interact with TNFAIP3 and TRAF6. TAX1BP1 binds to TNFAIP3 or TRAF6 and suppresses NF-kappaB transcriptional activation.

Immunogen: Synthetic peptide within Human TAX1BP1 aa 740-789 / 789.

Positive control: K-562 cell lysate, A549 cell lysate, 293T cell lysate, Jurkat cell lysate, mouse testis tissue lysate, rat testis tissue lysate, mouse testis tissue, rat testis tissue.

Subcellular location: Cytoplasm, Mitochondrion, Preautophagosomal structure, Cytoplasmic vesicle, autophagosome.

Database links: SwissProt: Q86VP1 Human | Q3UKC1 Mouse | Q66HA4 Rat

Recommended Dilutions:

WB 1:1,000-1:2,000

IHC-P 1:1,000

Storage Buffer: 1*TBS (pH7.4), 0.05% BSA, 40% Glycerol. Preservative: 0.05% Sodium Azide.

Storage Instruction: Shipped at 4°C. Store at +4°C short term (1-2 weeks). It is recommended to aliquot into single-use upon delivery. Store at -20°C long term.

Purity: Protein A affinity purified.

Hangzhou Huaan Biotechnology Co., Ltd.

Orders:0086-571-88062880

Technical:0086-571-89986345

Service mail:support@huabio.cn

华安生物
HUABIO
www.huabio.cn

Applications:WB=Western blot IHC-P=Immunohistochemistry (paraffin) IF-Cell=Immunofluorescence (Cell) IF-Tissue=Immunofluorescence (Tissue) FC=Flow cytometry IP=Immunoprecipitation

Images

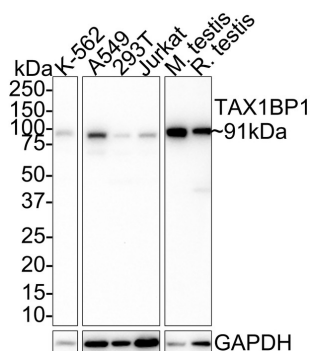


Fig1: Western blot analysis of TAX1BP1 on different lysates with Rabbit anti-TAX1BP1 antibody (HA721648) at 1/1,000 dilution.

Lane 1: K-562 cell lysate (20 µg/Lane)
 Lane 2: A549 cell lysate (20 µg/Lane)
 Lane 3: 293T cell lysate (20 µg/Lane)
 Lane 4: Jurkat cell lysate (20 µg/Lane)
 Lane 5: Mouse testis tissue lysate (40 µg/Lane)
 Lane 6: Rat testis tissue lysate (40 µg/Lane)

Predicted band size: 91 kDa

Observed band size: 91 kDa

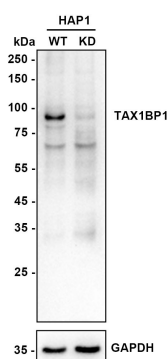
Exposure time: 1 minute;

4-20% SDS-PAGE gel.

Proteins were transferred to a PVDF membrane and blocked with 5% NFDM/TBST for 1 hour at room temperature. The primary antibody (HA721648) at 1/1,000 dilution was used in 5% NFDM/TBST at room temperature for 2 hours. Goat Anti-Rabbit IgG - HRP Secondary Antibody (HA1001) at 1:50,000 dilution was used for 1 hour at room temperature.

Fig2: Western blot analysis of TAX1BP1 on different lysates with Rabbit anti-TAX1BP1 antibody (HA721648) at 1/2,000 dilution.

Lane 1: HAP1-parental cell lysate
 Lane 2: HAP1-TAX1BP1 KD cell lysate



Lysates/proteins at 10 µg/Lane.

Predicted band size: 91 kDa

Observed band size: 91 kDa

Exposure time: 180 seconds; ECL: K1801;

4-20% SDS-PAGE gel.

Proteins were transferred to a PVDF membrane and blocked with 5% NFDM/TBST for 1 hour at room temperature. The primary antibody (HA721648) at 1/2,000 dilution was used in K1803 at 4°C overnight. Goat Anti-Rabbit IgG - HRP Secondary Antibody (HA1001) at 1/50,000 dilution was used for 1 hour at room temperature.

Hangzhou Huaan Biotechnology Co., Ltd.

Orders:0086-571-88062880

Technical:0086-571-89986345

Service mail:support@huabio.cn

华安生物
HUABIO
www.huabio.cn

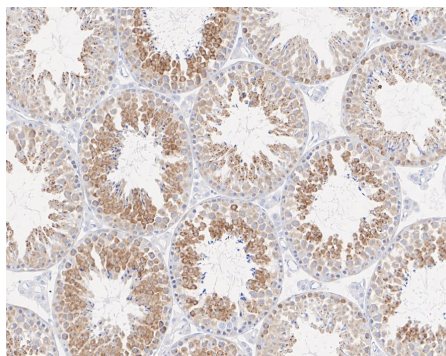


Fig3: Immunohistochemical analysis of paraffin-embedded mouse testis tissue with Rabbit anti-TAX1BP1 antibody (HA721648) at 1/1,000 dilution.

The section was pre-treated using heat mediated antigen retrieval with sodium citrate buffer (pH 6.0) (high pressure) for 2 minutes. The tissues were blocked in 1% BSA for 20 minutes at room temperature, washed with ddH₂O and PBS, and then probed with the primary antibody (HA721648) at 1/1,000 dilution for 1 hour at room temperature. The detection was performed using an HRP conjugated compact polymer system. DAB was used as the chromogen. Tissues were counterstained with hematoxylin and mounted with DPX.

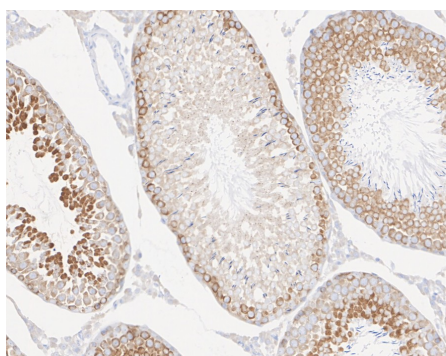


Fig4: Immunohistochemical analysis of paraffin-embedded rat testis tissue with Rabbit anti-TAX1BP1 antibody (HA721648) at 1/1,000 dilution.

The section was pre-treated using heat mediated antigen retrieval with sodium citrate buffer (pH 6.0) (high pressure) for 2 minutes. The tissues were blocked in 1% BSA for 20 minutes at room temperature, washed with ddH₂O and PBS, and then probed with the primary antibody (HA721648) at 1/1,000 dilution for 1 hour at room temperature. The detection was performed using an HRP conjugated compact polymer system. DAB was used as the chromogen. Tissues were counterstained with hematoxylin and mounted with DPX.

Note: All products are "FOR RESEARCH USE ONLY AND ARE NOT INTENDED FOR DIAGNOSTIC OR THERAPEUTIC USE".

Background References

1. White J et al. Multifaceted roles of TAX1BP1 in autophagy. *Autophagy*. 2023 Jan
2. Sarraf SA et al. Loss of TAX1BP1-Directed Autophagy Results in Protein Aggregate Accumulation in the Brain. *Mol Cell*. 2020 Dec

Hangzhou Huaan Biotechnology Co., Ltd.

Orders:0086-571-88062880

Technical:0086-571-89986345

Service mail:support@huabio.cn

华安生物
HUABIO
www.huabio.cn

Applications:WB=Western blot IHC-P=Immunohistochemistry (paraffin) IF-Cell=Immunofluorescence (Cell) IF-Tissue=Immunofluorescence (Tissue) FC=Flow cytometry IP=Immunoprecipitation