

Anti-KIF4A Antibody [JE38-91]

HA721591



Product Type:	Recombinant Rabbit monoclonal IgG, primary antibodies
Species reactivity:	Human, Mouse
Applications:	WB, IHC-P
Molecular Wt:	Predicted band size: 140 kDa
Clone number:	JE38-91

Description: Kinesin family member 4A is a protein that in humans is encoded by the KIF4A gene. Kinesins, such as KIF4A, are microtubule-based motor proteins that generate directional movement along microtubules. They are involved in many crucial cellular processes, including cell division. KIF4A has been shown to interact with HMG20B and DNMT3B. NTCP is the entry receptor for both Hepatitis B (HBV) and Hepatitis D viruses (HDV). KIF4 was found to play an essential role in HBV and HDV infection through its regulation of the retrograde transport of NTCP from the cytoplasm to the cell surface where it acts as a receptor for HBV/HDV infection.

Immunogen: Synthetic peptide within Human KIF4A aa 31-80 / 1,232.

Positive control: HeLa cell lysate, U-87 MG cell lysate, 293T cell lysate, SW480 cell lysate, mouse thymus tissue lysate, NIH/3T3 cell lysate, human lung carcinoma tissue.

Subcellular location: Nucleus matrix, Cytoplasm, cytoskeleton, spindle, Midbody, Chromosome.

Database links: SwissProt: O95239 Human | P33174 Mouse

Recommended Dilutions:

WB	1:1,000-1:2,000
IHC-P	1:1,000

Storage Buffer: 1*TBS (pH7.4), 0.05% BSA, 40% Glycerol. Preservative: 0.05% Sodium Azide.

Storage Instruction: Shipped at 4°C. Store at +4°C short term (1-2 weeks). It is recommended to aliquot into single-use upon delivery. Store at -20°C long term.

Purity: Protein A affinity purified.

Hangzhou Huaan Biotechnology Co., Ltd.

Orders:0086-571-88062880

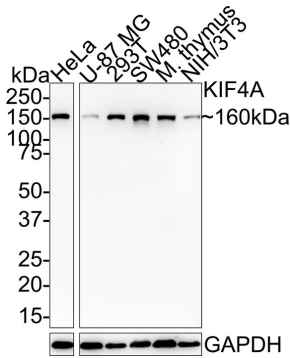
Technical:0086-571-89986345

Service mail:support@huabio.cn

华安生物
HUABIO
www.huabio.cn

Images

Fig1: Western blot analysis of KIF4A on different lysates with Rabbit anti-KIF4A antibody (HA721591) at 1/1,000 dilution.



Lane 1: HeLa cell lysate (20 µg/Lane)
 Lane 2: U-87 MG cell lysate (20 µg/Lane)
 Lane 3: 293T cell lysate (20 µg/Lane)
 Lane 4: SW480 cell lysate (20 µg/Lane)
 Lane 5: Mouse thymus tissue lysate (40 µg/Lane)
 Lane 6: NIH/3T3 cell lysate (20 µg/Lane)

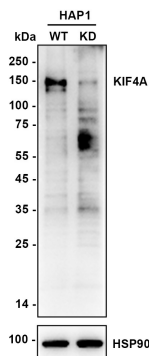
Predicted band size: 140 kDa
 Observed band size: 160 kDa

Exposure time: 6 minutes;

4-20% SDS-PAGE gel.

Proteins were transferred to a PVDF membrane and blocked with 5% NFDm/TBST for 1 hour at room temperature. The primary antibody (HA721591) at 1/1,000 dilution was used in 5% NFDm/TBST at 4°C overnight. Goat Anti-Rabbit IgG - HRP Secondary Antibody (HA1001) at 1:100,000 dilution was used for 1 hour at room temperature.

Fig2: Western blot analysis of KIF4A on different lysates with Rabbit anti-KIF4A antibody (HA721591) at 1/2,000 dilution.



Lane 1: HAP1-parental cell lysate
 Lane 2: HAP1-KIF4A KD cell lysate

Lysates/proteins at 10 µg/Lane.

Predicted band size: 140 kDa
 Observed band size: 160 kDa

Exposure time: 60 seconds; ECL: K1802;

4-20% SDS-PAGE gel.

Proteins were transferred to a PVDF membrane and blocked with 5% NFDm/TBST for 1 hour at room temperature. The primary antibody (HA721591) at 1/2,000 dilution was used in K1803 at 4°C overnight. Goat Anti-Rabbit IgG - HRP Secondary Antibody (HA1001) at 1/50,000 dilution was used for 1 hour at room temperature.

Hangzhou Huaan Biotechnology Co., Ltd.

Orders:0086-571-88062880

Technical:0086-571-89986345

Service mail:support@huabio.cn

华安生物
 HUABIO
 www.huabio.cn

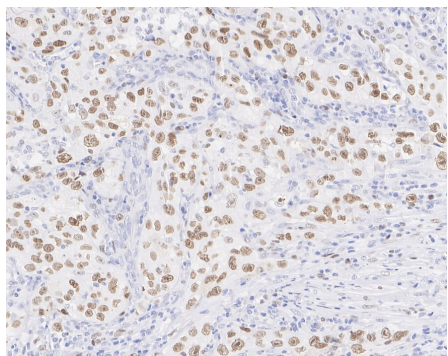


Fig3: Immunohistochemical analysis of paraffin-embedded human lung carcinoma tissue with Rabbit anti-KIF4A antibody (HA721591) at 1/1,000 dilution.

The section was pre-treated using heat mediated antigen retrieval with Tris-EDTA buffer (pH 9.0) for 20 minutes. The tissues were blocked in 1% BSA for 20 minutes at room temperature, washed with ddH₂O and PBS, and then probed with the primary antibody (HA721591) at 1/1,000 dilution for 1 hour at room temperature. The detection was performed using an HRP conjugated compact polymer system. DAB was used as the chromogen. Tissues were counterstained with hematoxylin and mounted with DPX.

Note: All products are "FOR RESEARCH USE ONLY AND ARE NOT INTENDED FOR DIAGNOSTIC OR THERAPEUTIC USE".

Background References

1. Sun X et al. KIF4A enhanced cell proliferation and migration via Hippo signaling and predicted a poor prognosis in esophageal squamous cell carcinoma. *Thorac Cancer*. 2021 Feb
2. Chen J et al. KIF4A Regulates the Progression of Pancreatic Ductal Adenocarcinoma through Proliferation and Invasion. *Biomed Res Int*. 2021 Nov

Hangzhou Huaan Biotechnology Co., Ltd.

Orders:0086-571-88062880

Technical:0086-571-89986345

Service mail:support@huabio.cn

华安生物
HUABIO
www.huabio.cn