

Anti-Palladin Antibody [JE66-56]

HA721440



Product Type:	Recombinant Rabbit monoclonal IgG, primary antibodies
Species reactivity:	Human
Applications:	WB
Molecular Wt:	Predicted band size: 151 kDa
Clone number:	JE66-56

Description: Palladin is a protein that in humans is encoded by the PALLD gene. Palladin is a component of actin-containing microfilaments that control cell shape, adhesion, and contraction. It is a part of the myotilin-myopalladin-palladin family and may play an important role in modulating the actin cytoskeleton. Palladin, in contrast to myotilin and myopalladin, which are expressed only in striated muscle, is expressed ubiquitously in cells of mesenchymal origin. Palladin's precise biological role is poorly understood, but it has been shown to play a role in cytoskeletal organization, embryonic development, cell motility, scar formation in the skin, and nerve cell development.

Immunogen: Synthetic peptide.

Positive control: HeLa cell lysate, SiHa cell lysate, A431 cell lysate, SW480 cell lysate, 293T cell lysate, HEK-293 cell lysate, MDA-MB-231 cell lysate, MDA-MB-468 cell lysate, MCF7 cell lysate.

Subcellular location: Cytoplasm, cytoskeleton, Cytoplasm, myofibril, sarcomere, Z line.

Database links: SwissProt: Q8WX93 Human

Recommended Dilutions:

WB 1:1,000

Storage Buffer: 1*TBS (pH7.4), 0.05% BSA, 40% Glycerol. Preservative: 0.05% Sodium Azide.

Storage Instruction: Store at +4℃ after thawing. Aliquot store at -20℃. Avoid repeated freeze / thaw cycles.

Purity: Protein A affinity purified.

Hangzhou Huaan Biotechnology Co., Ltd.

Orders:0086-571-88062880

Technical:0086-571-89986345

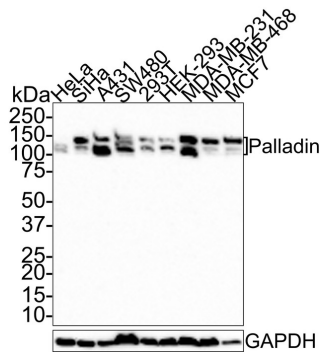
Service mail:support@huabio.cn

华安生物
HUABIO
www.huabio.cn

Applications:WB=Western blot IHC-P=Immunohistochemistry (paraffin) IF-Cell=Immunofluorescence (Cell) IF-Tissue=Immunofluorescence (Tissue) FC=Flow cytometry IP=Immunoprecipitation

Images

Fig1: Western blot analysis of Palladin on different lysates with Rabbit anti-Palladin antibody (HA721440) at 1/1,000 dilution.



- Lane 1: HeLa cell lysate (15µg/Lane)
- Lane 2: SiHa cell lysate (10µg/Lane)
- Lane 3: A431 cell lysate (15 µg/Lane)
- Lane 4: SW480 cell lysate (30 µg/Lane)
- Lane 5: 293T cell lysate (20 µg/Lane)
- Lane 6: HEK-293 cell lysate (20 µg/Lane)
- Lane 7: MDA-MB-231 cell lysate (20 µg/Lane)
- Lane 8: MDA-MB-468 cell lysate (20 µg/Lane)
- Lane 9: MCF7 cell lysate (20 µg/Lane)

Predicted band size: 151 kDa
Observed band size: 110/151 kDa

Exposure time: 2 minutes;

4-20% SDS-PAGE gel.

Proteins were transferred to a PVDF membrane and blocked with 5% NFDM/TBST for 1 hour at room temperature. The primary antibody (HA721440) at 1/1,000 dilution was used in 5% NFDM/TBST at room temperature for 2 hours. Goat Anti-Rabbit IgG - HRP Secondary Antibody (HA1001) at 1:100,000 dilution was used for 1 hour at room temperature.

Note: All products are “FOR RESEARCH USE ONLY AND ARE NOT INTENDED FOR DIAGNOSTIC OR THERAPEUTIC USE”.

Background References

1. Mayer O et al. Cytoskeletal Protein Palladin in Adult Gliomas Predicts Disease Incidence, Progression, and Prognosis. Cancers (Basel). 2022 Oct
2. Shu X et al. Palladin promotes cancer stem cell-like properties in lung cancer by activating Wnt/B-Catenin signaling. Cancer Med. 2023 Feb