

# Anti-c-Maf Antibody [JE39-57]

HA721378



<b>Product Type:</b>	Recombinant Rabbit monoclonal IgG, primary antibodies
<b>Species reactivity:</b>	Human, Mouse, Rat
<b>Applications:</b>	WB
<b>Molecular Wt:</b>	Predicted band size: 38 kDa
<b>Clone number:</b>	JE39-57

<b>Description:</b>	Acts as a transcriptional activator or repressor. Involved in embryonic lens fiber cell development. Recruits the transcriptional coactivators CREBBP and/or EP300 to crystallin promoters leading to up-regulation of crystallin gene during lens fiber cell differentiation. Activates the expression of IL4 in T helper 2 (Th2) cells. Increases T-cell susceptibility to apoptosis by interacting with MYB and decreasing BCL2 expression. Together with PAX6, transactivates strongly the glucagon gene promoter through the G1 element. Activates transcription of the CD13 proximal promoter in endothelial cells. Represses transcription of the CD13 promoter in early stages of myelopoiesis by affecting the ETS1 and MYB cooperative interaction. Involved in the initial chondrocyte terminal differentiation and the disappearance of hypertrophic chondrocytes during endochondral bone development. Binds to the sequence 5'-[GT]G[GC]N[GT]NCTCAGNN-3' in the L7 promoter. Binds to the T-MARE (Maf response element) sites of lens-specific alpha- and beta-crystallin gene promoters. Binds element G1 on the glucagon promoter. Binds an AT-rich region adjacent to the TGC motif (atypical Maf response element) in the CD13 proximal promoter in endothelial cells (By similarity). When overexpressed, represses anti-oxidant response element (ARE)-mediated transcription. Involved either as an oncogene or as a tumor suppressor, depending on the cell context. Binds to the ARE sites of detoxifying enzyme gene promoters.
<b>Immunogen:</b>	Synthetic peptide within Human c-Maf aa 324-373 / 373.
<b>Positive control:</b>	A549 cell lysate, Raji cell lysate, mouse lung tissue lysate, mouse kidney tissue lysate, rat spleen tissue lysate, rat kidney tissue lysate.
<b>Subcellular location:</b>	Nucleus.
<b>Database links:</b>	SwissProt: O75444 Human   P54843 Mouse   P54844 Rat
<b>Recommended Dilutions:</b>	
<b>WB</b>	1:1,000
<b>Storage Buffer:</b>	1*TBS (pH7.4), 0.05% BSA, 40% Glycerol. Preservative: 0.05% Sodium Azide.
<b>Storage Instruction:</b>	Shipped at 4°C. Store at +4°C short term (1-2 weeks). It is recommended to aliquot into single-use upon delivery. Store at -20°C long term.
<b>Purity:</b>	Protein A affinity purified.

Hangzhou Huaan Biotechnology Co., Ltd.

Orders:0086-571-88062880

Technical:0086-571-89986345

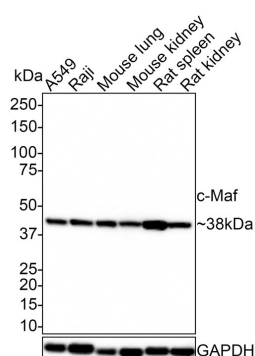
Service mail:support@huabio.cn

华安生物  
HUABIO  
www.huabio.cn

Applications:WB=Western blot IHC-P=Immunohistochemistry (paraffin) IF-Cell=Immunofluorescence (Cell) IF-Tissue=Immunofluorescence (Tissue) FC=Flow cytometry IP=Immunoprecipitation

## Images

**Fig1:** Western blot analysis of c-Maf on different lysates with Rabbit anti-c-Maf antibody (HA721378) at 1/1,000 dilution.



Lane 1: A549 cell lysate (10 µg/Lane)

Lane 2: Raji cell lysate (10 µg/Lane)

Lane 3: Mouse lung tissue lysate (20 µg/Lane)

Lane 4: Mouse kidney tissue lysate (20 µg/Lane)

Lane 5: Rat spleen tissue lysate (20 µg/Lane)

Lane 6: Rat kidney tissue lysate (20 µg/Lane)

Predicted band size: 38 kDa

Observed band size: 38 kDa

Exposure time: 40 seconds;

4-20% SDS-PAGE gel.

Proteins were transferred to a PVDF membrane and blocked with 5% NFDm/TBST for 1 hour at room temperature. The primary antibody (HA721378) at 1/1,000 dilution was used in 5% NFDm/TBST at room temperature for 2 hours. Goat Anti-Rabbit IgG - HRP Secondary Antibody (HA1001) at 1:100,000 dilution was used for 1 hour at room temperature.

**Note:** All products are "FOR RESEARCH USE ONLY AND ARE NOT INTENDED FOR DIAGNOSTIC OR THERAPEUTIC USE".

### Background References

1. Eychene A et al. A new MAFia in cancer. Nat. Rev. Cancer 8:683-693 (2008)
2. Pouponnot C et al. Cell context reveals a dual role for Maf in oncogenesis. Oncogene 25:1299-1310 (2006)

Hangzhou Huaan Biotechnology Co., Ltd.

Orders:0086-571-88062880

Technical:0086-571-89986345

Service mail:support@huabio.cn

华安生物  
HUABIO  
www.huabio.cn

Applications:WB=Western blot IHC-P=Immunohistochemistry (paraffin) IF-Cell=Immunofluorescence (Cell) IF-Tissue=Immunofluorescence (Tissue) FC=Flow cytometry IP=Immunoprecipitation