

# Anti-ZEB1 Antibody [JE57-64]

HA721318



<b>Product Type:</b>	Recombinant Rabbit monoclonal IgG, primary antibodies
<b>Species reactivity:</b>	Human
<b>Applications:</b>	WB, IHC-P
<b>Molecular Wt:</b>	Predicted band size: 124 kDa
<b>Clone number:</b>	JE57-64

**Description:** Zinc finger E-box-binding homeobox 1 is a protein that in humans is encoded by the ZEB1 gene. ZEB1 (previously known as TCF8) encodes a zinc finger and homeodomain transcription factor that represses T-lymphocyte-specific IL2 gene expression by binding to a negative regulatory domain 100 nucleotides 5-prime of the IL2 transcription start site. ZEB1 and its mammalian paralog ZEB2 belongs to the Zeb family within the ZF (zinc finger) class of homeodomain transcription factors. ZEB1 protein has 7 zinc fingers and 1 homeodomain. The structure of the homeodomain is shown on the right. Mutations of the gene are linked to posterior polymorphous corneal dystrophy 3. ZEB1 downregulates E-cadherin and induces epithelial to mesenchymal transition in breast and other carcinomas. A recent study suggested its contributing role in lung cancer invasiveness and metastasis development. Overexpression of ZEB1 has been identified as a potential risk factor for recurrence and poor prognosis in several types of cancers.

**Immunogen:** Recombinant protein within human ZEB1 aa 1-180/1124.

**Positive control:** Hela cell lysate, HUVEC cell lysate, human lung carcinoma tissue.

**Subcellular location:** Nucleus.

**Database links:** SwissProt: P37275 Human

**Recommended Dilutions:**

<b>WB</b>	1:500-1:1,000
<b>IHC-P</b>	1:200

**Storage Buffer:** 1\*TBS (pH7.4), 0.05% BSA, 40% Glycerol. Preservative: 0.05% Sodium Azide.

**Storage Instruction:** Shipped at 4°C. Store at +4°C short term (1-2 weeks). It is recommended to aliquot into single-use upon delivery. Store at -20°C long term.

**Purity:** Protein A affinity purified.

Hangzhou Huaan Biotechnology Co., Ltd.

Orders: 0086-571-88062880

Technical: 0086-571-89986345

Service mail: support@huabio.cn

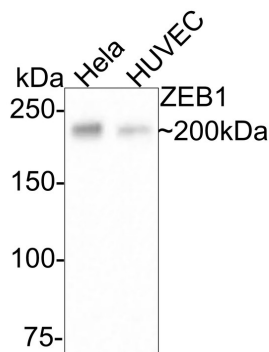
华安生物  
HUABIO  
www.huabio.cn

Applications: WB=Western blot IHC-P=Immunohistochemistry (paraffin) IF-Cell=Immunofluorescence (Cell) IF-Tissue=Immunofluorescence (Tissue) FC=Flow cytometry IP=Immunoprecipitation

## Images

**Fig1:** Western blot analysis of ZEB1 on different lysates with Rabbit anti-ZEB1 antibody (HA721318) at 1/500 dilution.

Lane 1: HeLa cell lysate  
Lane 2: HUVEC cell lysate



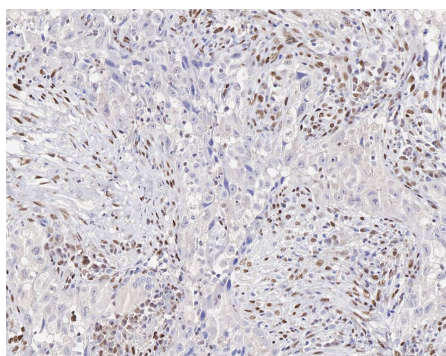
Lysates/proteins at 10 µg/Lane.

Predicted band size: 124 kDa  
Observed band size: 200 kDa

Exposure time: 3 minutes;

6% SDS-PAGE gel.

Proteins were transferred to a PVDF membrane and blocked with 5% NFDM/TBST for 1 hour at room temperature. The primary antibody (HA721318) at 1/500 dilution was used in 5% NFDM/TBST at room temperature for 2 hours. Goat Anti-Rabbit IgG - HRP Secondary Antibody (HA1001) at 1:200,000 dilution was used for 1 hour at room temperature.



**Fig2:** Immunohistochemical analysis of paraffin-embedded human lung carcinoma tissue with Rabbit anti-ZEB1 antibody (HA721318) at 1/200 dilution.

The section was pre-treated using heat mediated antigen retrieval with sodium citrate buffer (pH 6.0) (high pressure) for 2 minutes. The tissues were blocked in 1% BSA for 20 minutes at room temperature, washed with ddH<sub>2</sub>O and PBS, and then probed with the primary antibody (HA721318) at 1/200 dilution for 1 hour at room temperature. The detection was performed using an HRP conjugated compact polymer system. DAB was used as the chromogen. Tissues were counterstained with hematoxylin and mounted with DPX.

**Note:** All products are "FOR RESEARCH USE ONLY AND ARE NOT INTENDED FOR DIAGNOSTIC OR THERAPEUTIC USE".

### Background References

1. Zhang Y et al. Expression and Function of ZEB1 in the Cornea. Cells. 2021 Apr
2. Zhou Y et al. ZEB1 enhances Warburg effect to facilitate tumorigenesis and metastasis of HCC by transcriptionally activating PFKM. Theranostics. 2021 Apr

**Hangzhou Huaan Biotechnology Co., Ltd.**

Orders:0086-571-88062880

Technical:0086-571-89986345

Service mail:support@huabio.cn

华安生物  
HUABIO  
www.huabio.cn

Applications:WB=Western blot IHC-P=Immunohistochemistry (paraffin) IF-Cell=Immunofluorescence (Cell) IF-Tissue=Immunofluorescence (Tissue) FC=Flow cytometry IP=Immunoprecipitation