

FITC Conjugated Anti-Mannose Receptor(CD206) Antibody [JF0953]

HA720214F



| | |
|----------------------------|---|
| Product Type: | Recombinant Rabbit monoclonal IgG, primary antibodies |
| Species reactivity: | Human |
| Applications: | FC |
| Molecular Wt: | Predicted band size: 166 kDa |
| Clone number: | JF0953 |

Description: CD206, also known as macrophage mannose receptor type C (MMR or MRC1), is a type I membrane receptor protein. It is an phagocytic and endocytic receptor that can recognize carbohydrate ligands in target molecules. The extracellular portion of the protein includes eight C-type carbohydrate recognition domains (CRD) which are clustered together to achieve higher affinity binding to saccharides. CD206 is found on macrophages and on endothelial cells of the liver and is the only known example of a C-type lectin that contains multiple C-type CRDs. CD206 mediates the endocytosis of glycoproteins by macrophages and binds high-mannose structures on the surface of potentially pathogenic viruses, fungi and bacteria enabling them to be neutralized by phagocytic engulfment. During inflammation, CD206 is crucial for rapid clearance of several mannose-bearing serum glycoproteins but does not regulate the initiation of inflammation. CD206 is primarily expressed in mature tissue macrophages and immature dendritic cells, as well as hepatic and lymphatic endothelial cells, retinal pigmental epithelium (RPE) and mesangial cells.

Conjugate: FITC-conjugated

Immunogen: Synthetic peptide within Human CD206 aa 1,407-1,456 / 1,456.

Positive control: HepG2.

Subcellular location: Endosome membrane, Cell membrane.

Database links: SwissProt: P22897 Human

Recommended Dilutions:
FC 1:1,000

Storage Buffer: Supplied in phosphate-buffered solution, pH 7.2, containing 0.2% ProClean 950 and BSA.

Storage Instruction: Store at +4℃ after thawing. Aliquot store at -20℃. Avoid repeated freeze / thaw cycles.

Purity: Protein A affinity purified.

Hangzhou Huaan Biotechnology Co., Ltd.

Orders:0086-571-88062880

Technical:0086-571-89986345

Service mail:support@huabio.cn

 华安生物
HUABIO
www.huabio.cn

Applications:WB=Western blot IHC-P=Immunohistochemistry (paraffin) IF-Cell=Immunofluorescence (Cell) IF-Tissue=Immunofluorescence (Tissue) FC=Flow cytometry IP=Immunoprecipitation

Images

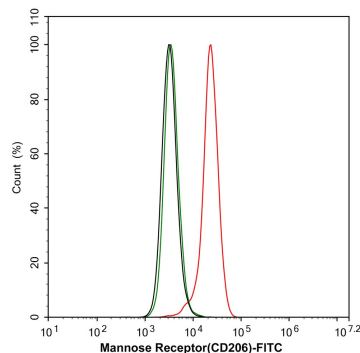


Fig1: Flow cytometric analysis of HepG2 cells labeling Mannose Receptor(CD206).

Cells were fixed and permeabilized. Then incubated for 1 hour at +4℃ with Mannose Receptor(CD206) (HA720214F, red, 1/1,000) and Rabbit IgG Isotype Control (FITC, green, 1µg/mL). Unlabelled sample was used as a control (cells without incubation with primary antibody; black).

Note: All products are “FOR RESEARCH USE ONLY AND ARE NOT INTENDED FOR DIAGNOSTIC OR THERAPEUTIC USE”.

Background References

1. Huen SC et al. GM-CSF Promotes Macrophage Alternative Activation after Renal Ischemia/Reperfusion Injury. J Am Soc Nephrol 26:1334-45 (2015).
2. Lean QY et al. Orally Administered Enoxaparin Ameliorates Acute Colitis by Reducing Macrophage-Associated Inflammatory Responses. PLoS One 10:e0134259 (2015).

Hangzhou Huaan Biotechnology Co., Ltd.

Orders:0086-571-88062880

Technical:0086-571-89986345

Service mail:support@huabio.cn

华安生物
HUABIO
www.huabio.cn

Applications:WB=Western blot IHC-P=Immunohistochemistry (paraffin) IF-Cell=Immunofluorescence (Cell) IF-Tissue=Immunofluorescence (Tissue) FC=Flow cytometry IP=Immunoprecipitation