

# iFluor™ 488 Conjugated Anti-NSE Antibody [SC06-28] HA720178F



<b>Product Type:</b>	Recombinant Rabbit monoclonal IgG, primary antibodies
<b>Species reactivity:</b>	Human, Mouse, Rat
<b>Applications:</b>	IF-Cell, FC
<b>Molecular Wt:</b>	Predicted band size: 47 kDa
<b>Clone number:</b>	SC06-28

**Description:** Gamma-enolase, also known as enolase 2 (ENO2) or neuron specific enolase (NSE), is an enzyme that in humans is encoded by the ENO2 gene. Gamma-enolase is a phosphopyruvate hydratase. Gamma-enolase is one of the three enolase isoenzymes found in mammals. This isoenzyme, a homodimer, is found in mature neurons and cells of neuronal origin. A switch from alpha enolase to gamma enolase occurs in neural tissue during development in rats and primates.

**Conjugate:** iFluor™ 488, Ex: 491nm; Em: 516nm.

**Immunogen:** Synthetic peptide within human NSE aa 30-70.

**Positive control:** SH-SY5Y.

**Subcellular location:** Cytoplasm, Cell membrane.

**Database links:** SwissProt: P09104 Human | P17183 Mouse | P07323 Rat

**Recommended Dilutions:**

IF-Cell	1:50
FC	1:500-1:1,000

**Storage Buffer:** Preservative: 0.02% Sodium azide Constituents: 30% Glycerol, 1% BSA, 68.98% PBS.

**Storage Instruction:** Store at +4°C after thawing. Aliquot store at -20°C or -80°C. Avoid repeated freeze / thaw cycles.

**Purity:** Protein A affinity purified.

Hangzhou Huaan Biotechnology Co., Ltd.

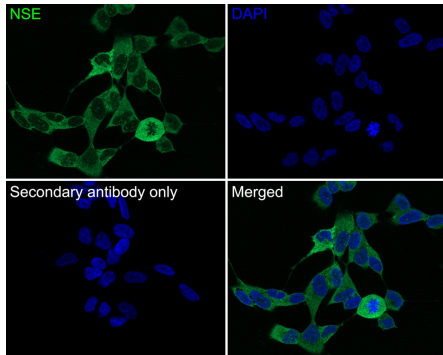
Orders:0086-571-88062880

Technical:0086-571-89986345

Service mail:support@huabio.cn

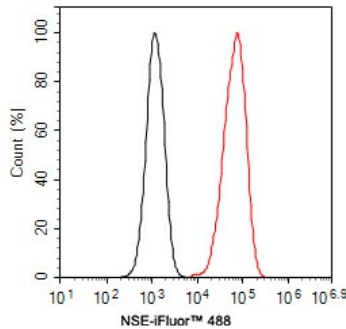
 华安生物  
HUABIO  
www.huabio.cn

## Images



**Fig1:** Immunocytochemistry analysis of SH-SY5Y cells labeling NSE with Rabbit anti-NSE antibody (HA720178F) at 1/50 dilution.

Cells were fixed in 100% methanol for 10 minutes, permeabilized with 0.1% Triton X-100 in PBS for 15 minutes, and then blocked with 2% normal goat serum for 30 minutes at room temperature. Cells were then incubated with Rabbit anti-NSE antibody (HA720178F) at 1/50 dilution in 2% normal goat serum overnight at 4 °C. Nuclear DNA was labelled in blue with DAPI.



**Fig2:** Flow cytometric analysis of SH-SY5Y cells labeling NSE.

Cells were fixed and permeabilized. Then incubated for 1 hour at +4 °C with NSE (HA720178F, red, 1ug/ml). Unlabelled sample was used as a control (cells without incubation with primary antibody; black).

**Note:** All products are "FOR RESEARCH USE ONLY AND ARE NOT INTENDED FOR DIAGNOSTIC OR THERAPEUTIC USE".

## Background References

1. Chang BS et al. Collagen complexes increase the efficiency of iPS cells generated using fibroblasts from adult mice. *J Reprod Dev* 61:145-53 (2015).
2. Sun Y et al. The expression and significance of neuronal iconic proteins in podocytes. *PLoS One* 9:e93999 (2014).

Hangzhou Huaan Biotechnology Co., Ltd.

Orders:0086-571-88062880

Technical:0086-571-89986345

Service mail:support@huabio.cn

华安生物  
HUABIO  
www.huabio.cn