

Anti-WIPI1 Antibody [JE56-92]

HA720010



Product Type:	Recombinant Rabbit monoclonal IgG, primary antibodies
Species reactivity:	Human
Applications:	WB, IHC-P
Molecular Wt:	Predicted band size: 49 kDa
Clone number:	JE56-92

Description: This gene encodes a WD40 repeat protein. Members of the WD40 repeat family are key components of many essential biologic functions. They regulate the assembly of multiprotein complexes by presenting a beta-propeller platform for simultaneous and reversible protein-protein interactions. Members of the WIPI subfamily of WD40 repeat proteins have a 7-bladed propeller structure and contain a conserved motif for interaction with phospholipids. Alternative splicing results in multiple transcript variants.

Immunogen: Recombinant protein within human WIPI1 aa 20-120.

Positive control: JAR cell lysate, SW480 cell lysate, SK-MEL-28 cell lysate, human skeletal muscle tissue.

Subcellular location: Endosome, trans-Golgi network, cytoskeleton, clathrin-coated vesicle, preautophagosomal structure membrane.

Database links: SwissProt: Q5MNZ9 Human

Recommended Dilutions:

WB	1:2,000
IHC-P	1:200

Storage Buffer: 1*TBS (pH7.4), 0.05% BSA, 40% Glycerol. Preservative: 0.05% Sodium Azide.

Storage Instruction: Shipped at 4°C. Store at +4°C short term (1-2 weeks). It is recommended to aliquot into single-use upon delivery. Store at -20°C long term.

Purity: Protein A affinity purified.

Hangzhou Huaan Biotechnology Co., Ltd.

Orders:0086-571-88062880

Technical:0086-571-89986345

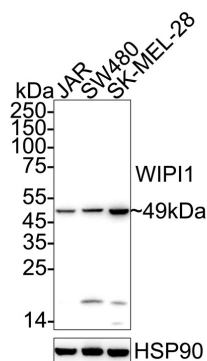
Service mail:support@huabio.cn

华安生物
HUABIO
www.huabio.cn

Images

Fig1: Western blot analysis of WIPI1 on different lysates with Rabbit anti-WIPI1 antibody (HA720010) at 1/2,000 dilution.

Lane 1: JAR cell lysate
Lane 2: SW480 cell lysate
Lane 3: SK-MEL-28 cell lysate



Lysates/proteins at 20 µg/Lane.

Predicted band size: 49 kDa
Observed band size: 49 kDa

Exposure time: 20 seconds; ECL: K1801;

4-20% SDS-PAGE gel.

Proteins were transferred to a PVDF membrane and blocked with 5% NFDM/TBST for 1 hour at room temperature. The primary antibody (HA720010) at 1/2,000 dilution was used in 5% NFDM/TBST at 4°C overnight. Goat Anti-Rabbit IgG - HRP Secondary Antibody (HA1001) at 1/50,000 dilution was used for 1 hour at room temperature.

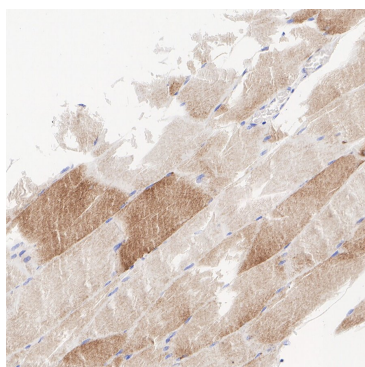


Fig2: Immunohistochemical analysis of paraffin-embedded human skeletal muscle tissue with Rabbit anti-WIPI1 antibody (HA720010) at 1/200 dilution.

The section was pre-treated using heat mediated antigen retrieval with Tris-EDTA buffer (pH 9.0) for 20 minutes. The tissues were blocked in 1% BSA for 20 minutes at room temperature, washed with ddH₂O and PBS, and then probed with the primary antibody (HA720010) at 1/200 dilution for 1 hour at room temperature. The detection was performed using an HRP conjugated compact polymer system. DAB was used as the chromogen. Tissues were counterstained with hematoxylin and mounted with DPX.

Note: All products are "FOR RESEARCH USE ONLY AND ARE NOT INTENDED FOR DIAGNOSTIC OR THERAPEUTIC USE".

Background References

1. Tzimas C. et. al. WIPI1 is a conserved mediator of right ventricular failure. JCI Insight. 2019 Apr
2. D'Arcangelo D. et. al. WIPI1, BAG1, and PEX3 Autophagy-Related Genes Are Relevant Melanoma Markers. Oxid Med Cell Longev. 2018 Dec

Hangzhou Huan Biotechnology Co., Ltd.

Orders:0086-571-88062880

Technical:0086-571-89986345

Service mail:support@huabio.cn

华安生物
HUABIO
www.huabio.cn