

CD21 Recombinant Antibody [PD00-23] - Rat IgG1 (Chimeric) - BSA and Azide free

HA610405



Product Type:	Recombinant Chimeric Antibody, primary antibodies
Species reactivity:	Human
Applications:	WB, IHC-P
Molecular Wt:	Predicted band size: 113 kDa
Clone number:	PD00-23

Description: CD21 is a type I integral membrane glycoprotein that serves as a receptor for the C3d complement fragment and for the Epstein-Barr virus. It plays a role in B cell activation and proliferation and undergoes phosphorylation after B cell activation with phorbol esters. CD21 is expressed on mature B cells, follicular dendritic cells, pharyngeal and cervical epithelial cells and a subset of thymocytes. The adaptive immune response is tightly regulated to limit responding cells in an antigen-specific manner. On B cells, co-receptors CD21/CD19 modulate the strength of B cell Ag receptor (BCR) signals, thereby influencing cell fate. Complement receptor (CR) type 2 (CR2/ CD21) is normally expressed during the immature and mature stages of B cell development. In association with CD19, CD21 plays an important role in enhancing mature B cell responses to foreign antigens.

Immunogen: Synthetic peptide within Human CD21 aa 1000 to the C-terminus.

Subcellular location: Cell membrane.

Database links: SwissProt: P20023 Human

Recommended Dilutions:

WB	1:5,000
IHC-P	1:4,000

Storage Buffer: PBS (pH7.4).

Storage Instruction: Store at +4°C after thawing. Aliquot store at -20°C. Avoid repeated freeze / thaw cycles.

Purity: Protein A affinity purified.

Hangzhou Huaan Biotechnology Co., Ltd.

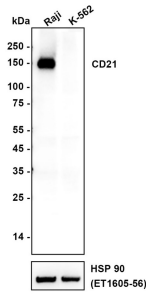
Orders:0086-571-88062880

Technical:0086-571-89986345

Service mail:support@huabio.cn

 华安生物
HUABIO
www.huabio.cn

Images



Copyright © HUABIO Limited

Fig1: Western blot analysis of CD21 on different lysates with Rabbit anti-CD21 antibody (HA610405) at 1/5,000 dilution.

Lane 1: Raji (Human Burkitt's lymphoma cells)

Lane 2: K-562 (Human chronic myelogenous leukemia cells)

Lysates/proteins at 20 µg/Lane.

Exposure time: 20 seconds; ECL: K1801

Negative expression of CD21 protein in K562 cell is consistent with the predicted expression pattern

Blocking: 5% NFDM/TBST, 1 hour at room temperature

Primary antibody: HA610405, 1/5,000 in primary antibody dilution buffer (K1803), overnight at 4 °C

Secondary antibody: Goat anti-Rat IgG-HRP (HA1023), 1/50,00 in 5% NFDM/TBST, 1 hour at room temperature

Predicted band size: 113 kDa

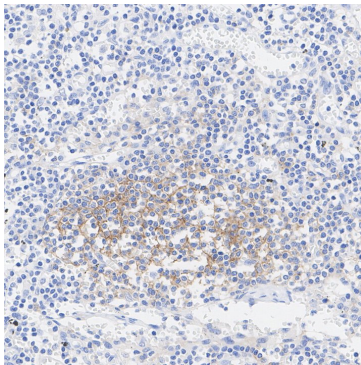
Observed band size: 150 kDa

Fig2: Application: Immunohistochemistry (IHC-P)

Species: Human

Tissue: Lymph node

Sample: Paraffin-embedded section



Antigen retrieval: Heat-mediated, Tris-EDTA buffer (pH 9.0), 20 minutes at 95°C.

Wash buffer: 1× TBST

Endogenous peroxidase blocking: 3% H₂O₂, 10 minutes at room temperature.

Blocking: 1% BSA + 10% normal goat serum, 10 minutes at room temperature.

Primary antibody: HA610405, 1/4,000, 1 hour at room temperature.

Secondary antibody: HA1023, 20 minutes at room temperature.

Hangzhou Huaan Biotechnology Co., Ltd.

Orders:0086-571-88062880

Technical:0086-571-89986345

Service mail:support@huabio.cn

华安生物
HUABIO
www.huabio.cn

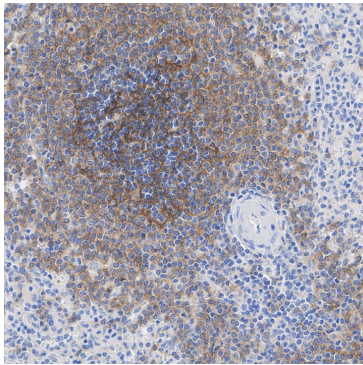


Fig3: Application: Immunohistochemistry (IHC-P)

Species: Human

Tissue: Spleen

Sample: Paraffin-embedded section

Antigen retrieval: Heat-mediated, Tris-EDTA buffer (pH 9.0), 20 minutes at 95°C.

Wash buffer: 1× TBST

Endogenous peroxidase blocking: 3% H₂O₂, 10 minutes at room temperature.

Blocking: 1% BSA + 10% normal goat serum, 10 minutes at room temperature.

Primary antibody: HA610405, 1/4,000, 1 hour at room temperature.

Secondary antibody: HA1023, 20 minutes at room temperature.

Note: All products are “FOR RESEARCH USE ONLY AND ARE NOT INTENDED FOR DIAGNOSTIC OR THERAPEUTIC USE”.

Background References

1. Smith NA. et. al. CD21 (Complement Receptor 2) Is the Receptor for Epstein-Barr Virus Entry into T Cells. J Virol. 2020 May
2. Visentini M. et. al. CD21(low) B cells are predictive markers of new digital ulcers in systemic sclerosis. Clin Exp Immunol. 2021 Aug

Hangzhou Huaan Biotechnology Co., Ltd.

Orders:0086-571-88062880

Technical:0086-571-89986345

Service mail:support@huabio.cn

华安生物
HUABIO
www.huabio.cn