

HA610392



Product Type:	Recombinant Chimeric Antibody, primary antibodies
Species reactivity:	Human, Mouse, Rat
Applications:	IHC-Fr, IF-Tissue
Molecular Wt:	Predicted band size: 33 kDa
Clone number:	JF0943

Description: Myelin basic protein (MBP) is the major extrinsic membrane protein of central nervous system myelin. MBP phosphorylation at Threonine 125 is a complex regulatory process that modulates the contribution of MBP to the stability of the myelin sheath. Mitogen-activated protein kinases modulate MBP phosphorylation during myelinogenesis and in the demyelinating disease multiple sclerosis. MBP phosphorylation is regulated by high-frequency stimulation but not low-frequency stimulation of the alveus, the myelinated output fibers of the hippocampus. It is proposed that during periods of increased neuronal activity, calcium activates axonal nitric oxide synthase, which generates the intercellular messengers nitric oxide and superoxide and regulates the phosphorylation state of MBP by MAPK.

Immunogen: Recombinant protein within Human Myelin Basic Protein aa 121-304 / 304.

Positive control: Human brain tissue, mouse brain tissue, rat brain tissue,

Subcellular location: Myelin membrane, Nucleus.

Database links: SwissProt: P02686 Human | P04370 Mouse | P02688 Rat

Recommended Dilutions:

IHC-Fr	1:200
IF-Tissue	1:500

Storage Buffer: 1*PBS (pH7.4).

Storage Instruction: Store at +4°C after thawing. Aliquot store at -20°C. Avoid repeated freeze / thaw cycles.

Purity: Protein A affinity purified.

Hangzhou Huaan Biotechnology Co., Ltd.

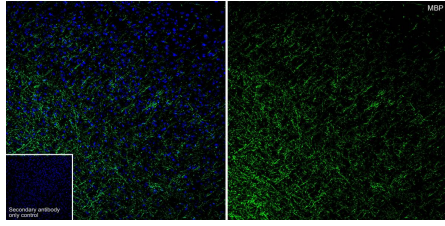
Orders:0086-571-88062880

Technical:0086-571-89986345

Service mail:support@huabio.cn


www.huabio.cn

Images

**Fig1:** Application: IHC-Fr

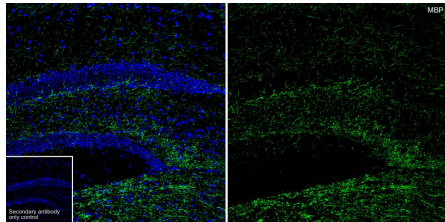
Species: Mouse

Site: brain

Sample: Frozen section

Antibody concentration: 1/200

Antigen retrieval: Not required

**Fig2:** Application: IHC-Fr

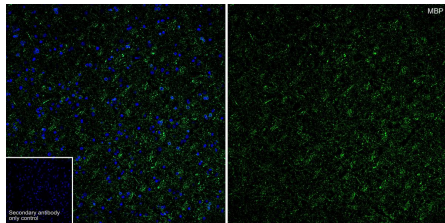
Species: Mouse

Site: hippocampus

Sample: Frozen section

Antibody concentration: 1/200

Antigen retrieval: Not required

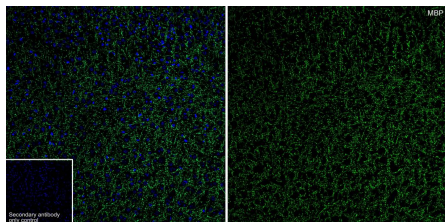
**Fig3:** Application: IF-Tissue

Species: Human

Site: brain

Sample: Paraffin-embedded section

Antibody concentration: 1/500

**Fig4:** Application: IF-Tissue

Species: Mouse

Site: brain

Sample: Paraffin-embedded section

Antibody concentration: 1/500

Hangzhou Huaan Biotechnology Co., Ltd.

Orders:0086-571-88062880

Technical:0086-571-89986345

Service mail:support@huabio.cn


 华安生物
 HUABIO
 www.huabio.cn

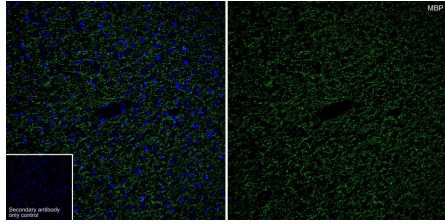


Fig5: Application: IF-Tissue

Species: Rat

Site: brain

Sample: Paraffin-embedded section

Antibody concentration: 1/500

Note: All products are “FOR RESEARCH USE ONLY AND ARE NOT INTENDED FOR DIAGNOSTIC OR THERAPEUTIC USE”.

Background References

1. Martinsen V et al. Multiple sclerosis and myelin basic protein: insights into protein disorder and disease. *Amino Acids*. 2022 Jan
2. Bagheri H et al. Myelin basic protein mRNA levels affect myelin sheath dimensions, architecture, plasticity, and density of resident glial cells. *Glia*. 2024 Oct

Hangzhou Huan Biotechnology Co., Ltd.

Orders:0086-571-88062880

Technical:0086-571-89986345

Service mail:support@huabio.cn

华安生物
HUABIO
www.huabio.cn