



HA610302

Product Type:	Recombinant Chimeric Antibody, primary antibodies
Species reactivity:	Human, Mouse, Rat
Applications:	IHC-Fr, WB
Molecular Wt:	Predicted band size: 207 kDa
Clone number:	PSH07-89

Description: Nestin is a major intermediate filament (IF) protein of embryonic central nervous system progenitor cells. It is also a component of the dynamic IF network during muscle development, where it polymerizes with Desmin and Vimentin. Nestin co-assembles with Vimentin or α -internexin and forms heterodimer coiled-coil molecules which then further assemble into 10 nm IFs. Deletion of the IF consensus rod domain in nestin alters nestin localization in CNS precursor cells and radial glial cells in vivo. Nestin is a marker for neuroepithelial stem cells, glioma cells and tumor endothelial cells during rapid growth. During axon elongation of differentiation neurons, nestin localizes to the growth cones and may play a role in growth cone guidance. In the rat adrenal gland, nestin is expressed by the zona fasciculata and the zona reticularis. Nestin is also expressed by dermatomal cells and by myoblasts during the earliest stages of myogenesis.

Immunogen: Recombinant protein within mouse Nestin aa 700-1,000.

Positive control: RD cell lysate, C2C12 cell lysate, C6 cell lysate.

Subcellular location: Cytoplasm, Intermediate filament.

Database links: SwissProt: P48681 Human | Q6P5H2 Mouse | P21263 Rat

Recommended Dilutions:

IHC-Fr	1:200
WB	1:10,000

Storage Buffer: PBS (pH7.4).

Storage Instruction: Store at +4°C after thawing. Aliquot store at -20°C. Avoid repeated freeze / thaw cycles.

Purity: Protein A affinity purified.

Hangzhou Huaan Biotechnology Co., Ltd.

Orders: 0086-571-88062880

Technical: 0086-571-89986345

Service mail: support@huabio.cn


华安生物
 HUABIO
www.huabio.cn

Images

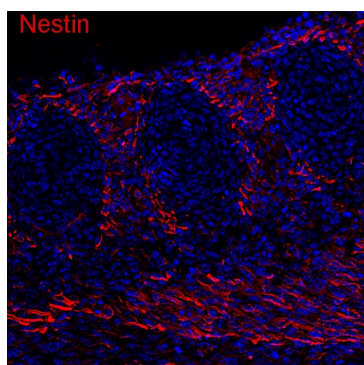


Fig1: Application: IHC-Fr

Species: Mouse

Site: embryonic cartilage

Sample: Frozen section

Antibody concentration: 1/200

Antigen retrieval: Not required

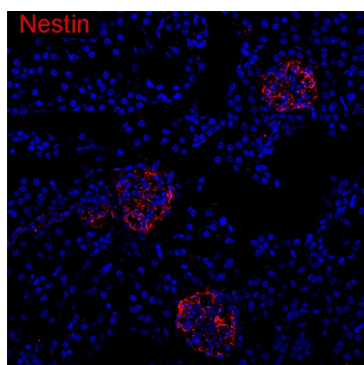


Fig2: Application: IHC-Fr

Species: Mouse

Site: kidney

Sample: Frozen section

Antibody concentration: 1/200

Antigen retrieval: Not required

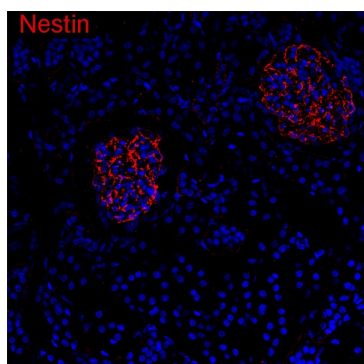


Fig3: Application: IHC-Fr

Species: Rat

Site: kidney

Sample: Frozen section

Antibody concentration: 1/200

Antigen retrieval: Not required

Hangzhou Huaan Biotechnology Co., Ltd.

Orders:0086-571-88062880

Technical:0086-571-89986345

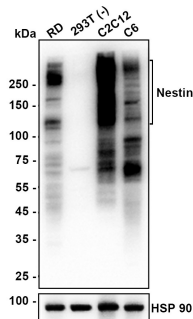
Service mail:support@huabio.cn

华安生物
HUABIO
www.huabio.cn

Applications:WB=Western blot IHC-P=Immunohistochemistry (paraffin) IF-Cell=Immunofluorescence (Cell) IF-Tissue=Immunofluorescence (Tissue) FC=Flow cytometry IP=Immunoprecipitation

Fig4: Western blot analysis of Nestin on different lysates with Guinea pig anti-Nestin antibody (HA610302) at 1/10,000 dilution.

Lane 1: RD cell lysate
Lane 2: 293T cell lysate (negative)
Lane 3: C2C12 cell lysate
Lane 4: C6 cell lysate



Lysates/proteins at 20 µg/Lane.

Predicted band size: 207 kDa
Observed band size: 100-300 kDa

Exposure time: 20 seconds; ECL: K1801;

4-20% SDS-PAGE gel.

Proteins were transferred to a PVDF membrane and blocked with 5% NFDM/TBST for 1 hour at room temperature. The primary antibody (HA610302) at 1/10,000 dilution was used in primary antibody dilution (K1803) at 4°C overnight. Rabbit anti-Guinea pig IgG H&L - HRP Secondary Antibody (HA1021) at 1/50,000 dilution was used for 1 hour at room temperature.

Note: All products are "FOR RESEARCH USE ONLY AND ARE NOT INTENDED FOR DIAGNOSTIC OR THERAPEUTIC USE".

Background References

1. Chen H et al. Targeting Nestin(+) hepatic stellate cells ameliorates liver fibrosis by facilitating TbetaRI degradation. J Hepatol. 2021 May
2. Wang J et al. Nestin promotes pulmonary fibrosis via facilitating recycling of TGF-beta receptor I. Eur Respir J. 2022 May

Hangzhou Huaan Biotechnology Co., Ltd.

Orders:0086-571-88062880

Technical:0086-571-89986345

Service mail:support@huabio.cn

华安生物
HUABIO
www.huabio.cn

Applications:WB=Western blot IHC-P=Immunohistochemistry (paraffin) IF-Cell=Immunofluorescence (Cell) IF-Tissue=Immunofluorescence (Tissue) FC=Flow cytometry IP=Immunoprecipitation