

Anti-CD35 Antibody [A4F3-R] - BSA and Azide free

HA610095



Product Type:	Recombinant Mouse monoclonal IgG1, primary antibodies
Species reactivity:	Human
Applications:	WB, IF-Tissue, IHC-P
Molecular Wt:	Predicted band size: 224 kDa
Clone number:	A4F3-R

Description: Complement receptor type 1 (CR1) also known as C3b/C4b receptor or CD35 (cluster of differentiation 35) is a protein that in humans is encoded by the CR1 gene. This gene is a member of the regulators of complement activation (RCA) family and is located in the 'cluster RCA' region of chromosome 1. The gene encodes a monomeric single-pass type I membrane glycoprotein found on erythrocytes, leukocytes, glomerular podocytes, hyalocytes, and splenic follicular dendritic cells. The Knops blood group system is a system of antigens located on this protein. The protein mediates cellular binding to particles and immune complexes that have activated complement. Decreases in expression of this protein and/or mutations in its gene have been associated with gallbladder carcinomas, mesangiocapillary glomerulonephritis, systemic lupus erythematosus and sarcoidosis. Mutations in this gene have also been associated with a reduction in Plasmodium falciparum rosetting, conferring protection against severe malaria. Alternate allele-specific splice variants, encoding different isoforms, have been characterized. Additional allele specific isoforms, including a secreted form, have been described but have not been fully characterized.

Immunogen: Synthetic peptide within C-terminal human CD35.

Positive control: TF-1 cell lysate, human kidney tissue lysate, human tonsil tissue, human Hodgkin lymphoma tissue, human small intestine tissue.

Subcellular location: Membrane.

Database links: SwissProt: P17927 Human

Recommended Dilutions:

WB	1:2,000
IF-Tissue	1:200
IHC-P	1:1,000

Storage Buffer: 1*PBS (pH7.4).

Storage Instruction: Store at +4°C after thawing. Aliquot store at -20°C. Avoid repeated freeze / thaw cycles.

Purity: Protein A affinity purified.

Hangzhou Huaan Biotechnology Co., Ltd.

Orders:0086-571-88062880

Technical:0086-571-89986345

Service mail:support@huabio.cn

 华安生物
HUABIO
www.huabio.cn

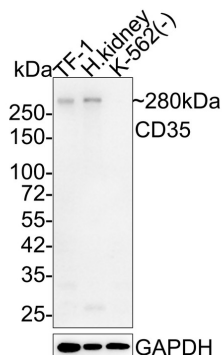
Images

Fig1: Western blot analysis of CD35 on different lysates with Mouse anti-CD35 antibody (HA610095) at 1/2,000 dilution.

Lane 1: TF-1 cell lysate

Lane 2: Human kidney tissue lysate

Lane 3: K-562 cell lysate (negative)



Lysates/proteins at 20 µg/Lane.

Predicted band size: 224 kDa

Observed band size: 280 kDa

Exposure time: 1 minute 14 seconds;

4-20% SDS-PAGE gel.

Proteins were transferred to a PVDF membrane and blocked with 5% NFDm/TBST for 1 hour at room temperature. The primary antibody (HA610095) at 1/2,000 dilution was used in 5% NFDm/TBST at 4°C overnight. Goat Anti-Mouse IgG - HRP Secondary Antibody (HA1006) at 1/50,000 dilution was used for 1 hour at room temperature.

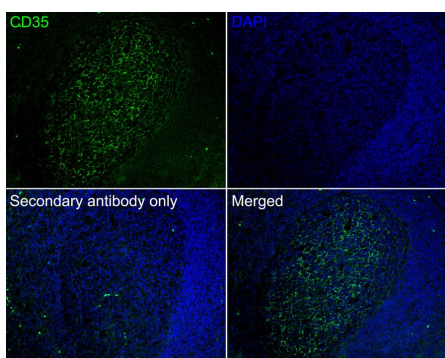


Fig2: Immunofluorescence analysis of paraffin-embedded human tonsil tissue labeling CD35 with Mouse anti-CD35 antibody (HA610095) at 1/200 dilution.

The section was pre-treated using heat mediated antigen retrieval with Tris-EDTA buffer (pH 9.0) for 20 minutes. The tissues were blocked in 10% negative goat serum for 1 hour at room temperature, washed with PBS, and then probed with the primary antibody (HA610095, green) at 1/200 dilution overnight at 4 °C, washed with PBS. Goat Anti-Mouse IgG H&L (iFluor™ 488, HA1125) was used as the secondary antibody at 1/1,000 dilution. Nuclei were counterstained with DAPI (blue).

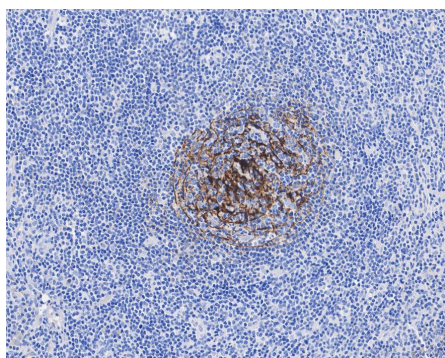


Fig3: Immunohistochemical analysis of paraffin-embedded human Hodgkin lymphoma tissue with Mouse anti-CD35 antibody (HA610095) at 1/1,000 dilution.

The section was pre-treated using heat mediated antigen retrieval with Tris-EDTA buffer (pH 9.0) for 20 minutes. The tissues were blocked in 1% BSA for 20 minutes at room temperature, washed with ddH₂O and PBS, and then probed with the primary antibody (HA610095) at 1/1,000 dilution for 1 hour at room temperature. The detection was performed using an HRP conjugated compact polymer system. DAB was used as the chromogen. Tissues were counterstained with hematoxylin and mounted with DPX.

Hangzhou Huaan Biotechnology Co., Ltd.

Orders:0086-571-88062880

Technical:0086-571-89986345

Service mail:support@huabio.cn

华安生物
HUABIO
www.huabio.cn

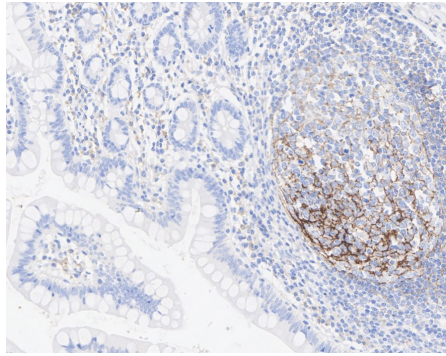


Fig4: Immunohistochemical analysis of paraffin-embedded human small intestine tissue with Mouse anti-CD35 antibody (HA610095) at 1/1,000 dilution.

The section was pre-treated using heat mediated antigen retrieval with Tris-EDTA buffer (pH 9.0) for 20 minutes. The tissues were blocked in 1% BSA for 20 minutes at room temperature, washed with ddH₂O and PBS, and then probed with the primary antibody (HA610095) at 1/1,000 dilution for 1 hour at room temperature. The detection was performed using an HRP conjugated compact polymer system. DAB was used as the chromogen. Tissues were counterstained with hematoxylin and mounted with DPX.

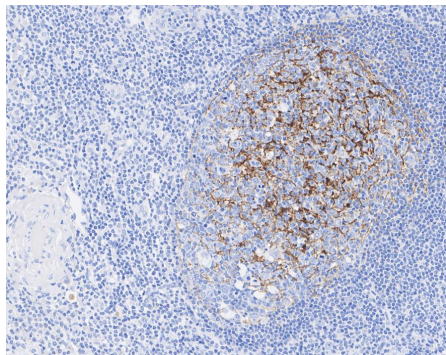


Fig5: Immunohistochemical analysis of paraffin-embedded human tonsil tissue with Mouse anti-CD35 antibody (HA610095) at 1/1,000 dilution.

The section was pre-treated using heat mediated antigen retrieval with Tris-EDTA buffer (pH 9.0) for 20 minutes. The tissues were blocked in 1% BSA for 20 minutes at room temperature, washed with ddH₂O and PBS, and then probed with the primary antibody (HA610095) at 1/1,000 dilution for 1 hour at room temperature. The detection was performed using an HRP conjugated compact polymer system. DAB was used as the chromogen. Tissues were counterstained with hematoxylin and mounted with DPX.

Note: All products are "FOR RESEARCH USE ONLY AND ARE NOT INTENDED FOR DIAGNOSTIC OR THERAPEUTIC USE".

Background References

1. Klickstein L.B. et. al. Identification of distinct C3b and C4b recognition sites in the human C3b/C4b receptor (CR1, CD35) by deletion mutagenesis. J. Exp. Med. 168:1699-1717(1988).

Hangzhou Huan Biotechnology Co., Ltd.

Orders:0086-571-88062880

Technical:0086-571-89986345

Service mail:support@huabio.cn

华安生物
HUABIO
www.huabio.cn