

## APC Conjugated Anti-CD25 / IL-2 Receptor alpha Antibody [PSH14-46]

### HA601530F



|                            |   |
|----------------------------|---|
| <b>Product Type:</b>       | Recombinant Mouse monoclonal IgG1, primary antibodies |
| <b>Species reactivity:</b> | Human   |
| <b>Applications:</b>       | FC  |
| <b>Molecular Wt:</b>       | Predicted band size: 31 kDa                           |
| <b>Clone number:</b>       | PSH14-46  |

**Description:** The interleukin-2 receptor alpha chain (also called Tac antigen, P55, and mainly CD25) is a protein involved in the assembly of the high-affinity interleukin-2 receptor, consisting of alpha (IL2RA), beta (IL2RB) and the common gamma chain (IL2RG). As the name indicates, this receptor interacts with interleukin-2, a pleiotropic cytokine which plays an important role in immune homeostasis.

**Conjugate:** APC

**Positive control:** Human peripheral blood cells.

**Subcellular location:** Membrane.

**Database links:** SwissProt: P01589 Human

**Recommended Dilutions:**

**FC** 5  $\mu$ l per million cells in 100  $\mu$ l staining volume or 5  $\mu$ l per 100  $\mu$ l of whole blood.

**Storage Buffer:** 1\*PBS (pH7.4), 1% BSA, 40% Glycerol, 0.2% Proclean 950.

**Storage Instruction:** Store at 2°C to 8°C. Avoid repeated freeze / thaw cycles.

**Purity:** Protein A affinity purified.

Hangzhou Huaan Biotechnology Co., Ltd.

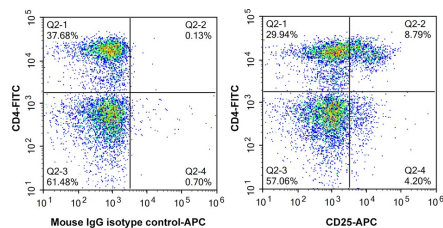
Orders:0086-571-88062880

Technical:0086-571-89986345

Service mail:support@huabio.cn

 华安生物  
HUABIO  
www.huabio.cn

## Images



**Fig1:** Flow cytometric analysis of human peripheral blood cells labelling CD25 / IL-2 Receptor alpha (HA601530F, APC) and CD4 (HA600119F, FITC).

Cells were washed twice with cold PBS and resuspend. Then incubated for 1 hour at +4°C with CD25 / IL-2 Receptor alpha (HA601530F, APC, 1/500) compared with Mouse IgG Isotype Control (APC, 1/1,000).

**Note:** All products are “FOR RESEARCH USE ONLY AND ARE NOT INTENDED FOR DIAGNOSTIC OR THERAPEUTIC USE”.

## Background References

1. Pan Z et al. IL2RA(+)VSIG4(+) tumor-associated macrophage is a key subpopulation of the immunosuppressive microenvironment in anaplastic thyroid cancer. *Biochim Biophys Acta Mol Basis Dis.* 2023 Jan
2. Nguyen CH et al. IL2RA Promotes Aggressiveness and Stem Cell-Related Properties of Acute Myeloid Leukemia. *Cancer Res.* 2020 Oct

Hangzhou Huaan Biotechnology Co., Ltd.

Orders:0086-571-88062880

Technical:0086-571-89986345

Service mail:support@huabio.cn

华安生物  
HUABIO  
www.huabio.cn