

# QKI-6 Recombinant Antibody [PSH10-23] - Guinea pig IgG2 (Chimeric)

## HA601502



<b>Product Type:</b>	Recombinant Chimeric Antibody, primary antibodies
<b>Species reactivity:</b>	Mouse, Rat
<b>Applications:</b>	IHC-Fr, WB
<b>Molecular Wt:</b>	Predicted band size: 35 kDa
<b>Clone number:</b>	PSH10-23

**Description:** Quaking homolog, KH domain RNA binding (mouse), also known as QKI, is a protein which in humans is encoded by the QKI gene. QKI belongs to a family of RNA-binding proteins called STAR proteins for Signal Transduction and Activation of RNA. They have an HNRNPK homology (KH) domain embedded in a 200-amino acid region called the GSG domain. Other members of this family include SAM68 (KHDRBS1) and SF1. Two more new members are KHDRBS3 and KHDRBS2. The QKI gene is implicated as being important in schizophrenia, and QKI controls translation of many oligodendrocyte-related genes.

**Immunogen:** Synthetic peptide within human QKI-6 aa 281-319 / 319.

**Positive control:** Mouse brain tissue lysate, Rat brain tissue lysate.

**Subcellular location:** Cytoplasm, cytosol, Nucleus.

**Database links:** SwissProt: Q9QYS9 Mouse | Q91XU1 Rat

**Recommended Dilutions:**

<b>IHC-Fr</b>	1:200
<b>WB</b>	1:5,000

**Storage Buffer:** PBS (pH7.4), 0.1% BSA, 40% Glycerol. Preservative: 0.05% Sodium Azide.

**Storage Instruction:** Shipped at 4°C. Store at +4°C short term (1-2 weeks). It is recommended to aliquot into single-use upon delivery. Store at -20°C long term.

**Purity:** Protein A affinity purified.

Hangzhou Huaan Biotechnology Co., Ltd.

Orders: 0086-571-88062880

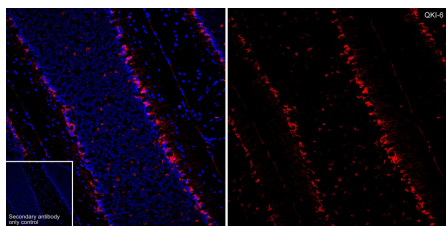
Technical: 0086-571-89986345

Service mail: support@huabio.cn

 华安生物  
HUABIO  
www.huabio.cn

Applications: WB=Western blot IHC-P=Immunohistochemistry (paraffin) IF-Cell=Immunofluorescence (Cell) IF-Tissue=Immunofluorescence (Tissue) FC=Flow cytometry IP=Immunoprecipitation

## Images

**Fig1:** Application: IHC-Fr

Species: Mouse

Site: cerebellum

Sample: Frozen section

Antibody concentration: 1/200

Antigen retrieval: Not required

**Fig2:** Western blot analysis of QKI-6 on different lysates with Guinea pig anti-QKI-6 antibody (HA601502) at 1/5,000 dilution.

Lane 1: Mouse brain tissue lysate

Lane 2: Mouse kidney tissue lysate (negative)

Lane 3: Rat brain tissue lysate

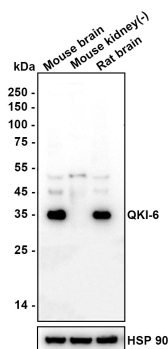
Lysates/proteins at 20 µg/Lane.

Predicted band size: 35 kDa

Observed band size: 35 kDa

Exposure time: 59 seconds; ECL: K1801;

4-20% SDS-PAGE gel.



Proteins were transferred to a PVDF membrane and blocked with 5% NFDM/TBST for 1 hour at room temperature. The primary antibody (HA601502) at 1/5,000 dilution was used in primary antibody dilution (K1803) at 4°C overnight. Rabbit anti-Guinea pig IgG H&L - HRP Secondary Antibody (HA1021) at 1/50,000 dilution was used for 1 hour at room temperature.

**Note:** All products are "FOR RESEARCH USE ONLY AND ARE NOT INTENDED FOR DIAGNOSTIC OR THERAPEUTIC USE".

## Background References

1. Zhao Z et al. QKI shuttles internal m(7)G-modified transcripts into stress granules and modulates mRNA metabolism. Cell. 2023 Jul
2. Suh YY et al. MYB/MYBL1::QKI fusion-positive diffuse glioma. J Neuropathol Exp Neurol. 2023 Feb

## Hangzhou Huaan Biotechnology Co., Ltd.

Orders:0086-571-88062880

Technical:0086-571-89986345

Service mail:support@huabio.cn

华安生物  
HUABIO  
www.huabio.cn

Applications:WB=Western blot IHC-P=Immunohistochemistry (paraffin) IF-Cell=Immunofluorescence (Cell) IF-Tissue=Immunofluorescence (Tissue) FC=Flow cytometry IP=Immunoprecipitation