

## SLC32A1 / VGAT Recombinant Antibody [PSH10-47] - Chicken IgY (Chimeric)

# HA601471



<b>Product Type:</b>	Recombinant Chimeric Antibody IgY, primary antibodies
<b>Species reactivity:</b>	Mouse
<b>Applications:</b>	IHC-Fr
<b>Molecular Wt:</b>	Predicted band size: 57 kDa
<b>Clone number:</b>	PSH10-47

**Description:** Vesicular inhibitory amino acid transporter is a protein that in humans is encoded by the SLC32A1 gene. The protein encoded by this gene is an integral membrane protein involved in gamma-aminobutyric acid (GABA) and glycine uptake into synaptic vesicles. The encoded protein is a member of amino acid/polyamine transporter family II.

**Subcellular location:** Cytoplasmic vesicle membrane, Presynapse.

**Database links:** SwissProt: O35633 Mouse

### Recommended Dilutions:

IHC-Fr 1:200

**Storage Buffer:** PBS (pH7.4), 0.1% BSA, 40% Glycerol. Preservative: 0.05% Sodium Azide.

**Storage Instruction:** Shipped at 4°C. Store at +4°C short term (1-2 weeks). It is recommended to aliquot into single-use upon delivery. Store at -20°C long term.

**Purity:** Protein A affinity purified.

Hangzhou Huaan Biotechnology Co., Ltd.

Orders: 0086-571-88062880

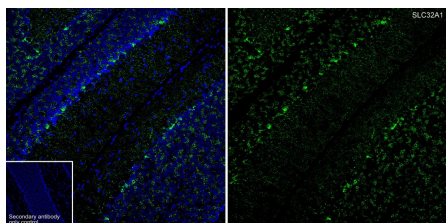
Technical: 0086-571-89986345

Service mail: support@huabio.cn

 华安生物  
HUABIO  
www.huabio.cn

Applications: WB=Western blot IHC-P=Immunohistochemistry (paraffin) IF-Cell=Immunofluorescence (Cell) IF-Tissue=Immunofluorescence (Tissue) FC=Flow cytometry IP=Immunoprecipitation

## Images

**Fig1:** Application: IHC-Fr

Species: Mouse

Site: cerebellum

Sample: Frozen section

Antibody concentration: 1/200

Antigen retrieval: Not required

**Note:** All products are “FOR RESEARCH USE ONLY AND ARE NOT INTENDED FOR DIAGNOSTIC OR THERAPEUTIC USE”.

## Background References

1. Heron SE et al. Association of SLC32A1 Missense Variants With Genetic Epilepsy With Febrile Seizures Plus. *Neurology*. 2021 May
2. Guerrini R et al. SLC32A1: One More Gene Contributing to the Solution of the Genetic Generalized Epilepsies Mystery. *Neurology*. 2021 May

Hangzhou Huaan Biotechnology Co., Ltd.

Orders:0086-571-88062880

Technical:0086-571-89986345

Service mail:support@huabio.cn

 华安生物  
HUABIO  
www.huabio.cn

Applications:WB=Western blot IHC-P=Immunohistochemistry (paraffin) IF-Cell=Immunofluorescence (Cell) IF-Tissue=Immunofluorescence (Tissue) FC=Flow cytometry IP=Immunoprecipitation