

# Anti-Fibulin 5 Antibody [A1C12]

HA600044



<b>Product Type:</b>	Mouse monoclonal IgG1, primary antibodies
<b>Species reactivity:</b>	Human
<b>Applications:</b>	WB, IF-Cell, FC
<b>Molecular Wt:</b>	50 kDa (Predicted band size)
<b>Clone number:</b>	A1C12

**Description:** Fibulin-5 (also known as DANCE (developmental arteries and neural crest epidermal growth factor (EGF)-like)) is a protein that in humans is encoded by the FBLN5 gene. The protein encoded by this gene is a secreted, extracellular matrix protein containing an Arg-Gly-Asp (RGD) motif and calcium-binding EGF-like domains. It promotes adhesion of endothelial cells through interaction of integrins and the RGD motif. It is prominently expressed in developing arteries but less so in adult vessels. However, its expression is reinduced in balloon-injured vessels and atherosclerotic lesions, notably in intimal vascular smooth muscle cells and endothelial cells. Therefore, the protein encoded by this gene may play a role in vascular development and remodeling. FBLN5 has been shown to interact with LOXL1 and apolipoprotein(a). FBLN5 mutations have been described in patients with age-related macular degeneration, as well as being involved in Charcot-Marie-Tooth neuropathies.

**Immunogen:** Recombinant protein within human Fibulin 5 aa 200-400.

**Positive control:** A549 cell lysate, SKOV-3 cell lysate, Hela cell lysate, SiHa cell lysate, SiHa.

**Subcellular location:** Secreted, extracellular matrix.

**Database links:** SwissProt: Q9UBX5 Human

**Recommended Dilutions:**

<b>WB</b>	1:500-1:2,000
<b>IF-Cell</b>	1:50-1:100
<b>FC</b>	1:100-1:500

**Storage Buffer:** PBS (pH7.4), 0.05% BSA, 40% Glycerol. Preservative: 0.05% Sodium Azide.

**Storage Instruction:** Shipped at 4°C. Store at +4°C short term (1-2 weeks). It is recommended to aliquot into single-use upon delivery. Store at -20°C long term.

**Purity:** Protein A affinity purified.

Hangzhou Huaan Biotechnology Co., Ltd.

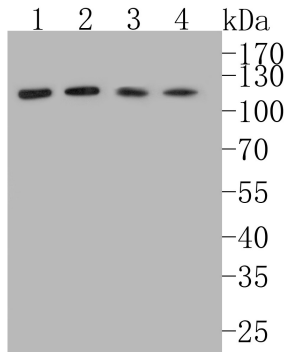
Orders:0086-571-88062880

Technical:0086-571-89986345

Service mail:support@huabio.cn

华安生物  
HUABIO  
www.huabio.cn

## Images



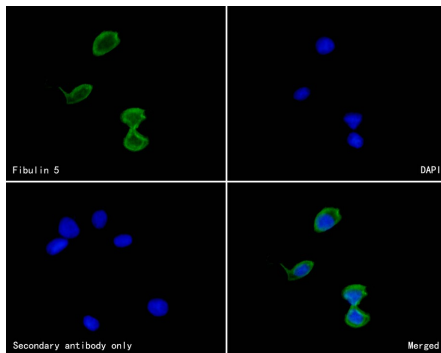
**Fig1:** Western blot analysis of Fibulin 5 on different lysates. Proteins were transferred to a PVDF membrane and blocked with 5% BSA in PBS for 1 hour at room temperature. The primary antibody (HA600044, 1/500) was used in 5% BSA at room temperature for 2 hours. Goat Anti-Mouse IgG - HRP Secondary Antibody (HA1006) at 1:200,000 dilution was used for 1 hour at room temperature.

**Positive control:**

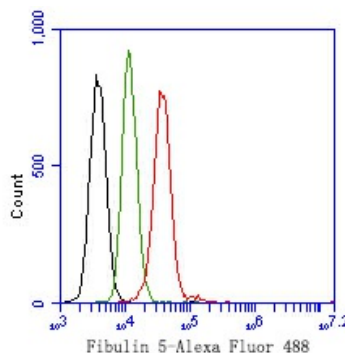
Lane 1: A549 cell lysate  
Lane 2: SKOV-3 cell lysate  
Lane 3: Hela cell lysate  
Lane 4: SiHa cell lysate

Predicted band size: 50 kDa

Observed band size: 110 kDa (Homodimer)



**Fig2:** ICC staining of Fibulin 5 in SiHa cells (green). Formalin fixed cells were permeabilized with 0.1% Triton X-100 in TBS for 10 minutes at room temperature and blocked with 10% negative goat serum for 15 minutes at room temperature. Cells were probed with the primary antibody (HA600044, 1/50) for 1 hour at room temperature, washed with PBS. Alexa Fluor®488 conjugate-Goat anti-Mouse IgG was used as the secondary antibody at 1/1,000 dilution. The nuclear counter stain is DAPI (blue).



**Fig3:** Flow cytometric analysis of Fibulin 5 was done on SiHa cells. The cells were fixed, permeabilized and stained with the primary antibody (HA600044, 1ug/ml) (red) compared with Mouse IgG, monoclonal - Isotype Control (green). After incubation of the primary antibody at +4°C for 1 hour, the cells were stained with a Alexa Fluor®488 conjugate-Goat anti-Mouse IgG Secondary antibody at 1/1,000 dilution for 30 minutes at +4°C (dark incubation). Unlabelled sample was used as a control (cells without incubation with primary antibody; black).

**Note:** All products are "FOR RESEARCH USE ONLY AND ARE NOT INTENDED FOR DIAGNOSTIC OR THERAPEUTIC USE".

## Background References

1. Tekedereli I. et. al. Autosomal recessive cutis laxa: a novel mutation in the FBLN5 gene in a family. Clin Dysmorphol. 2019 Apr;28(2):63-65.
2. Manders DB. et. al. Dysregulation of fibulin-5 and matrix metalloproteases in epithelial ovarian cancer. Oncotarget. 2018 Feb 14;9(18):14251-14267.

