

# Anti-CCPG1 Antibody

## HA500520



<b>Product Type:</b>	Rabbit polyclonal IgG, primary antibodies
<b>Species reactivity:</b>	Human, Mouse
<b>Applications:</b>	WB, FC
<b>Molecular Wt:</b>	Predicted band size: 87 kDa

**Description:** Acts as an assembly platform for Rho protein signaling complexes. Limits guanine nucleotide exchange activity of MCF2L toward RHOA, which results in an inhibition of both its transcriptional activation ability and its transforming activity. Does not inhibit activity of MCF2L toward CDC42, or activity of MCF2 toward either RHOA or CDC42 (By similarity). May be involved in cell cycle regulation.

**Immunogen:** Recombinant protein within human CCPG1 aa 241-390 / 757.

**Positive control:** HCT116 cell lysate, A549 cell lysate, Hela cell lysate, THP-1 cell lysate, SW480 cell lysate, HEK-293 cell lysate, NIH/3T3 cell lysate, C2C12 cell lysate, MEF cell lysate, SW480.

**Subcellular location:** Cytoplasmic granule membrane.

**Database links:** SwissProt: Q9ULG6 Human | Q640L3 Mouse

**Recommended Dilutions:**

<b>WB</b>	1:1,000
<b>FC</b>	1ug/mL

**Storage Buffer:** PBS (pH7.4), 0.1% BSA, 40% Glycerol. Preservative: 0.05% Sodium Azide.

**Storage Instruction:** Shipped at 4°C. Store at +4°C short term (1-2 weeks). It is recommended to aliquot into single-use upon delivery. Store at -20°C long term.

**Purity:** Immunogen affinity purified.

Hangzhou Huaan Biotechnology Co., Ltd.

Orders: 0086-571-88062880

Technical: 0086-571-89986345

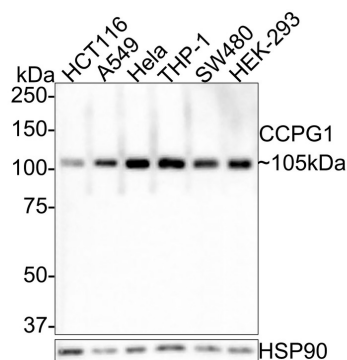
Service mail: support@huabio.cn

华安生物  
HUABIO  
www.huabio.cn

Applications: WB=Western blot IHC-P=Immunohistochemistry (paraffin) IF-Cell=Immunofluorescence (Cell) IF-Tissue=Immunofluorescence (Tissue) FC=Flow cytometry IP=Immunoprecipitation

## Images

**Fig1:** Western blot analysis of CCPG1 on different lysates with Rabbit anti-CCPG1 antibody (HA500520) at 1/1,000 dilution.



Lane 1: HCT116 cell lysate  
 Lane 2: A549 cell lysate  
 Lane 3: HeLa cell lysate  
 Lane 4: THP-1 cell lysate  
 Lane 5: SW480 cell lysate  
 Lane 6: HEK-293 cell lysate

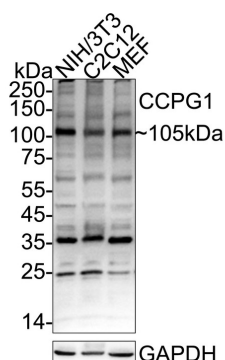
Lysates/proteins at 30 µg/Lane.

Predicted band size: 87 kDa  
 Observed band size: 105 kDa

Exposure time: 2 minutes;  
 8% SDS-PAGE gel.

Proteins were transferred to a PVDF membrane and blocked with 5% NFDM/TBST for 1 hour at room temperature. The primary antibody (HA500520) at 1/1,000 dilution was used in 5% NFDM/TBST at room temperature for 2 hours. Goat Anti-Rabbit IgG - HRP Secondary Antibody (HA1001) at 1:300,000 dilution was used for 1 hour at room temperature.

**Fig2:** Western blot analysis of CCPG1 on different lysates with Rabbit anti-CCPG1 antibody (HA500520) at 1/1,000 dilution.



Lane 1: NIH/3T3 cell lysate  
 Lane 2: C2C12 cell lysate  
 Lane 3: MEF cell lysate

Lysates/proteins at 20 µg/Lane.

Predicted band size: 87 kDa  
 Observed band size: 105 kDa

Exposure time: 6 seconds; ECL: K1801;  
 4-20% SDS-PAGE gel.

Proteins were transferred to a PVDF membrane and blocked with 5% NFDM/TBST for 1 hour at room temperature. The primary antibody (HA500520) at 1/1,000 dilution was used in primary antibody dilution (K1803) at 4°C overnight. Goat Anti-Rabbit IgG - HRP Secondary Antibody (HA1001) at 1/50,000 dilution was used for 1 hour at room temperature.

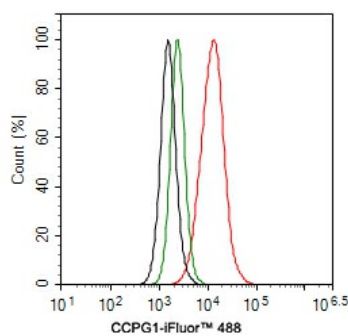
Hangzhou Huaan Biotechnology Co., Ltd.

Orders:0086-571-88062880

Technical:0086-571-89986345

Service mail:support@huabio.cn

华安生物  
 HUABIO  
 www.huabio.cn



**Fig3:** Flow cytometric analysis of SW480 cells labeling CCPG1.

Cells were fixed and permeabilized. Then stained with the primary antibody (HA500520, 1ug/ml) (red) compared with Rabbit IgG Isotype Control (green). After incubation of the primary antibody at +4℃ for an hour, the cells were stained with a iFluor™ 488 conjugate-Goat anti-Rabbit IgG Secondary antibody (HA1121) at 1/1,000 dilution for 30 minutes at +4℃. Unlabelled sample was used as a control (cells without incubation with primary antibody; black).

**Note:** All products are “FOR RESEARCH USE ONLY AND ARE NOT INTENDED FOR DIAGNOSTIC OR THERAPEUTIC USE”.

### Background References

1. Wang LM et al. CCPG1 involved in corneal *Aspergillus fumigatus* infection. *Int J Ophthalmol.* 2022 Apr
2. Smith MD et al. CCPG1 Is a Non-canonical Autophagy Cargo Receptor Essential for ER-Phagy and Pancreatic ER Proteostasis. *Dev Cell.* 2018 Jan

Hangzhou Huaan Biotechnology Co., Ltd.

Orders:0086-571-88062880

Technical:0086-571-89986345

Service mail:support@huabio.cn

华安生物  
HUABIO  
www.huabio.cn

Applications:WB=Western blot IHC-P=Immunohistochemistry (paraffin) IF-Cell=Immunofluorescence (Cell) IF-Tissue=Immunofluorescence (Tissue) FC=Flow cytometry IP=Immunoprecipitation