

Anti-Clathrin heavy chain Antibody

HA500499



Product Type:	Rabbit polyclonal IgG, primary antibodies
Species reactivity:	Human, Mouse
Applications:	WB, IHC-P
Molecular Wt:	192 kDa

Description: Clathrin is a major protein component of the cytoplasmic face of intracellular organelles, called coated vesicles and coated pits. These specialized organelles are involved in the intracellular trafficking of receptors and endocytosis of a variety of macromolecules. The basic subunit of the clathrin coat is composed of three heavy chains and three light chains.

Immunogen: Recombinant protein within human Clathrin heavy chain aa 1,401-1,550.

Positive control: A431 cell lysate, mouse brain tissue lysate, human placenta tissue.

Subcellular location: Spindle, Cytoplasmic vesicle membrane, Coated pit, Melanosome.

Database links: SwissProt: Q00610 Human

Recommended Dilutions:

WB	1:2,000
IHC-P	1:1,000

Storage Buffer: 1*TBS (pH7.4), 0.2% BSA, 50% Glycerol. Preservative: 0.05% Sodium Azide.

Storage Instruction: Shipped at 4°C. Store at +4°C short term (1-2 weeks). It is recommended to aliquot into single-use upon delivery. Store at -20°C long term.

Purity: Immunogen affinity purified.

Hangzhou Huaan Biotechnology Co., Ltd.

Orders:0086-571-88062880

Technical:0086-571-89986345

Service mail:support@huabio.cn

 华安生物
HUABIO
www.huabio.cn

Images

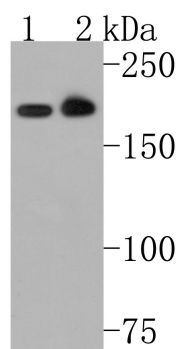


Fig1: Western blot analysis of Clathrin heavy chain on different lysates. Proteins were transferred to a PVDF membrane and blocked with 5% BSA in PBS for 1 hour at room temperature. The primary antibody (HA500499, 1/2,000) was used in 5% BSA at room temperature for 2 hours. Goat Anti-Rabbit IgG - HRP Secondary Antibody (HA1001) at 1:200,000 dilution was used for 1 hour at room temperature.

Positive control:

Lane 1: A431 cell lysate

Lane 2: Mouse brain tissue lysate

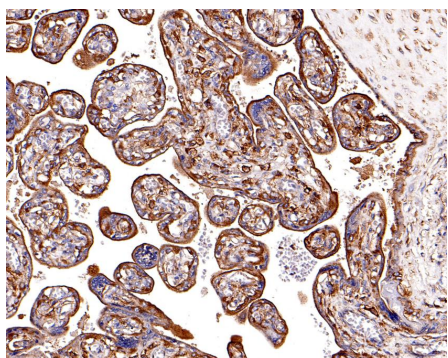


Fig2: Immunohistochemical analysis of paraffin-embedded human placenta tissue using anti-Clathrin heavy chain antibody. The section was pre-treated using heat mediated antigen retrieval with Tris-EDTA buffer (pH 9.0) for 20 minutes. The tissues were blocked in 1% BSA for 30 minutes at room temperature, washed with ddH₂O and PBS, and then probed with the primary antibody (HA500499, 1/1,000) for 30 minutes at room temperature. The detection was performed using an HRP conjugated compact polymer system. DAB was used as the chromogen. Tissues were counterstained with hematoxylin and mounted with DPX.

Note: All products are "FOR RESEARCH USE ONLY AND ARE NOT INTENDED FOR DIAGNOSTIC OR THERAPEUTIC USE".

Background References

1. Moulay G. et. al. Alternative splicing of clathrin heavy chain contributes to the switch from coated pits to plaques. *J Cell Biol.* 2020 Sep
2. Yabuno Y. et. al. Clathrin heavy chain phosphorylated at T606 plays a role in proper cell division. *Cell Cycle.* 2019 Aug

Hangzhou Huaan Biotechnology Co., Ltd.

Orders:0086-571-88062880

Technical:0086-571-89986345

Service mail:support@huabio.cn

华安生物
HUABIO
www.huabio.cn