

Anti-Glypican 4 Antibody

HA500432



Product Type:	Rabbit polyclonal IgG, primary antibodies
Species reactivity:	Human, Mouse, Rat
Applications:	WB, IF-Cell
Molecular Wt:	Predicted band size: 62 kDa

Description: Glypican-4 is a protein that in humans is encoded by the GPC4 gene. Cell surface heparan sulfate proteoglycans are composed of a membrane-associated protein core substituted with a variable number of heparan sulfate chains. Members of the glypican-related integral membrane proteoglycan family (GRIPS) contain a core protein anchored to the cytoplasmic membrane via a glycosyl phosphatidylinositol linkage. These proteins may play a role in the control of cell division and growth regulation. The GPC4 gene is adjacent to the 3' end of GPC3 and may also play a role in Simpson-Golabi-Behmel syndrome.

Immunogen: Synthetic peptide within Human Glypican 4 450-465aa

Positive control: Mouse pancreas tissue lysate, rat pancreas tissue lysate, Hela.

Subcellular location: Cell membrane, Secreted, extracellular space

Database links: SwissProt: O75487 Human | P51655 Mouse | Q642B0 Rat

Recommended Dilutions:

WB	1:1,000
IF-Cell	1:200

Storage Buffer: PBS (pH7.4), 0.1% BSA, 40% Glycerol. Preservative: 0.05% Sodium Azide.

Storage Instruction: Shipped at 4°C. Store at +4°C short term (1-2 weeks). It is recommended to aliquot into single-use upon delivery. Store at -20°C long term.

Purity: Immunogen affinity purified.

Hangzhou Huaan Biotechnology Co., Ltd.

Orders:0086-571-88062880

Technical:0086-571-89986345

Service mail:support@huabio.cn

 华安生物
HUABIO
www.huabio.cn

Images

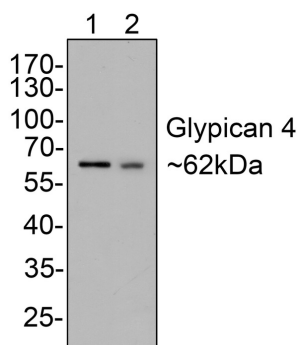


Fig1: Western blot analysis of Glypican 4 on different lysates with Rabbit anti-Glypican 4 antibody (HA500432) at 1/1,000 dilution.

Lane 1: Mouse pancreas tissue lysate (40 µg/Lane)

Lane 2: Rat pancreas tissue lysate (40 µg/Lane)

Predicted band size: 62 kDa

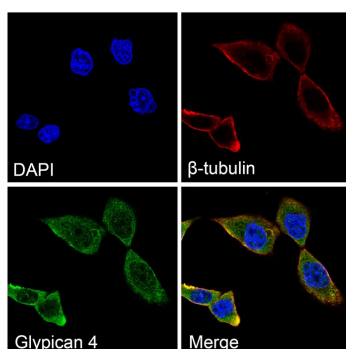
Observed band size: 62 kDa

Exposure time: 2 minutes;

10% SDS-PAGE gel.

Proteins were transferred to a PVDF membrane and blocked with 5% NFDM/TBST for 1 hour at room temperature. The primary antibody (HA500432) at 1/1,000 dilution was used in 5% NFDM/TBST at room temperature for 2 hours. Goat Anti-Rabbit IgG - HRP Secondary Antibody (HA1001) at 1:300,000 dilution was used for 1 hour at room temperature.

Fig2: Immunocytochemistry analysis of Hela cells labeling Glypican 4 with Rabbit anti-Glypican 4 antibody (HA500432) at 1/200 dilution.



Cells were fixed in 4% paraformaldehyde for 10 minutes at 37 °C, permeabilized with 0.05% Triton X-100 in PBS for 20 minutes, and then blocked with 2% negative goat serum for 30 minutes at room temperature. Cells were then incubated with Rabbit anti-Glypican 4 antibody (HA500432) at 1/200 dilution in 2% negative goat serum overnight at 4 °C. Goat Anti-Rabbit IgG H&L (iFluor™ 488, HA1121) was used as the secondary antibody at 1/1,000 dilution. Nuclear DNA was labelled in blue with DAPI.

β-tubulin (M1305-2, red) was stained at 1/100 dilution overnight at +4 °C. Goat Anti-Mouse IgG H&L (iFluor™ 647, HA1127) were used as the secondary antibody at 1/1,000 dilution.

Hangzhou Huaan Biotechnology Co., Ltd.

Orders:0086-571-88062880

Technical:0086-571-89986345

Service mail:support@huabio.cn

华安生物
HUABIO
www.huabio.cn

Note: All products are "FOR RESEARCH USE ONLY AND ARE NOT INTENDED FOR DIAGNOSTIC OR THERAPEUTIC USE".

Background References

1. Huber R, Mazzarella R, Chen CN, Chen E, Ireland M, Lindsay S, Pilia G, Crisponi L. Glypican 3 and glypican 4 are juxtaposed in Xq26.1. *Gene*. 1998 Dec 28;225(1-2):9-16.
2. Veugelers M, Cat BD, Muyldermans SY, Reekmans G, Delande N, Frints S, Legius E, Fryns JP, Schrandt-Stumpel C, Weidle B, Magdalena N, David G. Mutational analysis of the GPC3/GPC4 glypican gene cluster on Xq26 in patients with Simpson-Golabi-Behmel syndrome: identification of loss-of-function mutations in the GPC3 gene. *Hum Mol Genet*. 2000 May 22;9(9):1321-8.

Hangzhou Huaan Biotechnology Co., Ltd.

Orders:0086-571-88062880

Technical:0086-571-89986345

Service mail:support@huabio.cn

 华安生物
HUABIO
www.huabio.cn