

Anti-Podoplanin Antibody

HA500364



Product Type:	Rabbit polyclonal IgG, primary antibodies
Species reactivity:	Human
Applications:	WB, IHC-P
Molecular Wt:	Predicted band size: 17 kDa

Description: Mediates effects on cell migration and adhesion through its different partners. During development plays a role in blood and lymphatic vessels separation by binding CLEC1B, triggering CLEC1B activation in platelets and leading to platelet activation and/or aggregation. Interaction with CD9, on the contrary, attenuates platelet aggregation induced by PDPN. Through MSN or EZR interaction promotes epithelial-mesenchymal transition (EMT) leading to ERZ phosphorylation and triggering RHOA activation leading to cell migration increase and invasiveness. Interaction with CD44 promotes directional cell migration in epithelial and tumor cells. In lymph nodes (LNs), controls fibroblastic reticular cells (FRCs) adhesion to the extracellular matrix (ECM) and contraction of the actomyosin by maintaining ERM proteins (EZR; MSN and RDX) and MYL9 activation through association with unknown transmembrane proteins. Engagement of CLEC1B by PDPN promotes FRCs relaxation by blocking lateral membrane interactions leading to reduction of ERM proteins (EZR; MSN and RDX) and MYL9 activation. Through binding with LGALS8 may participate in connection of the lymphatic endothelium to the surrounding extracellular matrix. In keratinocytes, induces changes in cell morphology showing an elongated shape, numerous membrane protrusions, major reorganization of the actin cytoskeleton, increased motility and decreased cell adhesion.

Immunogen:	Synthetic peptide within human Podoplanin aa 23-72.
Positive control:	Human lung tissue lysate, Human placenta tissue lysate, human appendix tissue, human colon cancer tissue, human ovary tissue, human liver tissue.
Subcellular location:	Membrane.
Database links:	SwissProt: Q86YL7 Human
Recommended Dilutions:	
WB	1:1,000
IHC-P	1:500-1:1,000
Storage Buffer:	PBS (pH7.4), 0.1% BSA, 40% Glycerol. Preservative: 0.05% Sodium Azide.
Storage Instruction:	Shipped at 4°C. Store at +4°C short term (1-2 weeks). It is recommended to aliquot into single-use upon delivery. Store at -20°C long term.
Purity:	Immunogen affinity purified.

Hangzhou Huaan Biotechnology Co., Ltd.

Orders:0086-571-88062880

Technical:0086-571-89986345

Service mail:support@huabio.cn

 华安生物
HUABIO
www.huabio.cn

Images

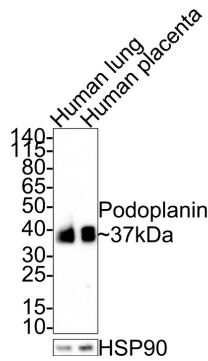


Fig1: Western blot analysis of Podoplanin on different lysates with Rabbit anti-Podoplanin antibody (HA500364) at 1/1,000 dilution.

Lane 1: Human lung tissue lysate, 20 µg/Lane.

Lane 2: Human placenta tissue lysate, 20 µg/Lane.

Predicted band size: 17 kDa

Observed band size: 37 kDa

Exposure time: 67 seconds;

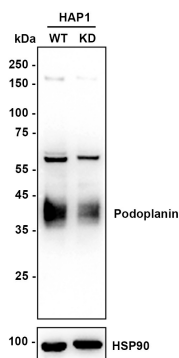
4-20% SDS-PAGE gel.

Proteins were transferred to a PVDF membrane and blocked with 5% NFDM/TBST for 1 hour at room temperature. The primary antibody (HA500364) at 1/1,000 dilution was used in 5% NFDM/TBST at room temperature for 2 hours. Goat Anti-Rabbit IgG - HRP Secondary Antibody (HA1001) at 1:300,000 dilution was used for 1 hour at room temperature.

Fig2: Western blot analysis of Podoplanin on different lysates with Rabbit anti-Podoplanin antibody (HA500364) at 1/1,000 dilution.

Lane 1: HAP1-parental cell lysate

Lane 2: HAP1-Podoplanin KD cell lysate



Lysates/proteins at 10 µg/Lane.

Predicted band size: 17 kDa

Observed band size: 37 kDa

Exposure time: 15 seconds; ECL: K1801;

4-20% SDS-PAGE gel.

Proteins were transferred to a PVDF membrane and blocked with 5% NFDM/TBST for 1 hour at room temperature. The primary antibody (HA500364) at 1/1,000 dilution was used in primary antibody dilution (K1803) at 4°C overnight. Goat Anti-Rabbit IgG - HRP Secondary Antibody (HA1001) at 1/50,000 dilution was used for 1 hour at room temperature.

Hangzhou Huaan Biotechnology Co., Ltd.

Orders:0086-571-88062880

Technical:0086-571-89986345

Service mail:support@huabio.cn

华安生物
HUABIO
www.huabio.cn

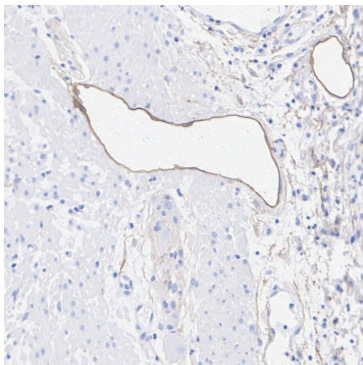


Fig3: Immunohistochemical analysis of paraffin-embedded human appendix tissue with Rabbit anti-Podoplanin antibody (HA500364) at 1/500 dilution.

The section was pre-treated using heat mediated antigen retrieval with Tris-EDTA buffer (pH 9.0) for 20 minutes. The tissues were blocked in 1% BSA for 20 minutes at room temperature, washed with ddH₂O and PBS, and then probed with the primary antibody (HA500364) at 1/500 dilution for 1 hour at room temperature. The detection was performed using an HRP conjugated compact polymer system. DAB was used as the chromogen. Tissues were counterstained with hematoxylin and mounted with DPX.

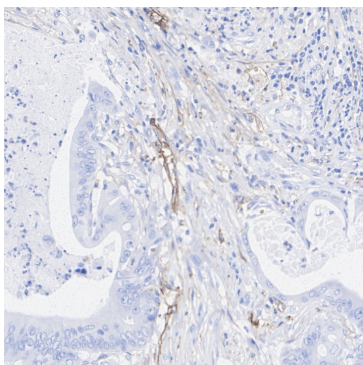


Fig4: Immunohistochemical analysis of paraffin-embedded human colon cancer tissue with Rabbit anti-Podoplanin antibody (HA500364) at 1/500 dilution.

The section was pre-treated using heat mediated antigen retrieval with Tris-EDTA buffer (pH 9.0) for 20 minutes. The tissues were blocked in 1% BSA for 20 minutes at room temperature, washed with ddH₂O and PBS, and then probed with the primary antibody (HA500364) at 1/500 dilution for 1 hour at room temperature. The detection was performed using an HRP conjugated compact polymer system. DAB was used as the chromogen. Tissues were counterstained with hematoxylin and mounted with DPX.

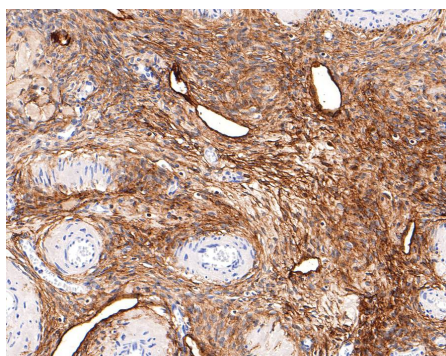


Fig5: Immunohistochemical analysis of paraffin-embedded human ovary tissue with Rabbit anti-Podoplanin antibody (HA500364) at 1/600 dilution.

The section was pre-treated using heat mediated antigen retrieval with Tris-EDTA buffer (pH 9.0) for 20 minutes. The tissues were blocked in 1% BSA for 20 minutes at room temperature, washed with ddH₂O and PBS, and then probed with the primary antibody (HA500364) at 1/600 dilution for 1 hour at room temperature. The detection was performed using an HRP conjugated compact polymer system. DAB was used as the chromogen. Tissues were counterstained with hematoxylin and mounted with DPX.

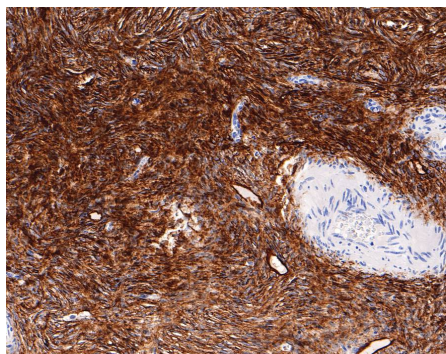


Fig6: Immunohistochemical analysis of paraffin-embedded human ovary tissue with Rabbit anti-Podoplanin antibody (HA500364) at 1/600 dilution.

The section was pre-treated using heat mediated antigen retrieval with Tris-EDTA buffer (pH 9.0) for 20 minutes. The tissues were blocked in 1% BSA for 20 minutes at room temperature, washed with ddH₂O and PBS, and then probed with the primary antibody (HA500364) at 1/600 dilution for 1 hour at room temperature. The detection was performed using an HRP conjugated compact polymer system. DAB was used as the chromogen. Tissues were counterstained with hematoxylin and mounted with DPX.

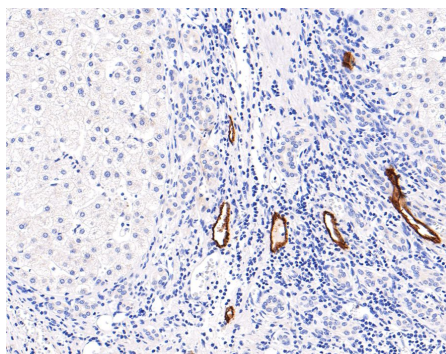


Fig7: Immunohistochemical analysis of paraffin-embedded human liver tissue with Rabbit anti-Podoplanin antibody (HA500364) at 1/600 dilution.

The section was pre-treated using heat mediated antigen retrieval with Tris-EDTA buffer (pH 9.0) for 20 minutes. The tissues were blocked in 1% BSA for 20 minutes at room temperature, washed with ddH₂O and PBS, and then probed with the primary antibody (HA500364) at 1/600 dilution for 1 hour at room temperature. The detection was performed using an HRP conjugated compact polymer system. DAB was used as the chromogen. Tissues were counterstained with hematoxylin and mounted with DPX.

Note: All products are "FOR RESEARCH USE ONLY AND ARE NOT INTENDED FOR DIAGNOSTIC OR THERAPEUTIC USE".

Background References

1. Wang Y et al. Podoplanin: Its roles and functions in neurological diseases and brain cancers. *Front Pharmacol.* 2022 Sep
2. Zhang Z et al. The Role of Podoplanin in the Immune System and Inflammation. *J Inflamm Res.* 2022 Jun

Hangzhou Huan Biotechnology Co., Ltd.

Orders:0086-571-88062880

Technical:0086-571-89986345

Service mail:support@huabio.cn

华安生物
HUABIO
www.huabio.cn