

Anti-PRDC Antibody

HA500225



Product Type:	Rabbit polyclonal IgG, primary antibodies
Species reactivity:	Human
Applications:	WB, FC
Molecular Wt:	Predicted band size: 19 kDa.

Description: PRDC (protein related to DAN and Cerberus) is a secreted cysteine knot-containing BMP antagonist belonging to the Cerberus/DAN (CAN) family. Mammalian CAN family members, including Gremlin, Dan, Cerberus, COCO, SOST, and USAG-1, have the conserved 6 cysteine residues that form a cysteine knot, and two additional cysteine residues located in the loops of the cysteine knot, which form an additional intrasubunit disulfide bond. PRDC acts as a specific BMP antagonist, binding to and blocking signaling induced by BMP-2 or -4, but not Activin or TGF-beta. Thus, PRDC expression in the ovary could be involved in follicular development by antagonizing the inhibitory effects of BMPs on FSH stimulation of progesterone

Immunogen: Synthetic peptide within human PRDC aa 50-100.

Positive control: CAL62 cell lysates, SH-SY5Y.

Subcellular location: Secreted.

Database links: SwissProt: Q9H772 Human

Recommended Dilutions:

WB	1:500-1:1,000
FC	1:200-1:500

Storage Buffer: 1*TBS (pH7.4), 0.2% BSA, 50% Glycerol. Preservative: 0.05% Sodium Azide.

Storage Instruction: Shipped at 4°C. Store at +4°C short term (1-2 weeks). It is recommended to aliquot into single-use upon delivery. Store at -20°C long term.

Purity: Immunogen affinity purified.

Hangzhou Huaan Biotechnology Co., Ltd.

Orders:0086-571-88062880

Technical:0086-571-89986345

Service mail:support@huabio.cn

华安生物
HUABIO
www.huabio.cn

Applications:WB=Western blot IHC-P=Immunohistochemistry (paraffin) IF-Cell=Immunofluorescence (Cell) IF-Tissue=Immunofluorescence (Tissue) FC=Flow cytometry IP=Immunoprecipitation

Images



Fig1: Western blot analysis of PRDC on CAL62 cell lysates. Proteins were transferred to a PVDF membrane and blocked with 5% BSA in PBS for 1 hour at room temperature. The primary antibody (HA500225, 1/500) was used in 5% BSA at room temperature for 2 hours. Goat Anti-Rabbit IgG - HRP Secondary Antibody (HA1001) at 1:200,000 dilution was used for 1 hour at room temperature.

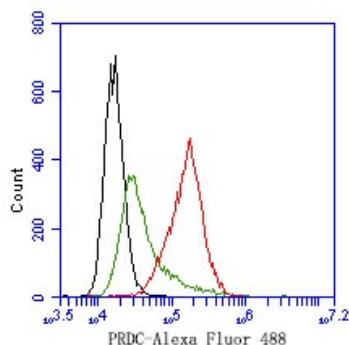


Fig2: Flow cytometric analysis of PRDC was done on SH-SY5Y cells. The cells were fixed, permeabilized and stained with the primary antibody (HA500225, 1ug/ml) (red) compared with Rabbit IgG, monoclonal - Isotype Control (green). After incubation of the primary antibody at +4 °C for 1 hour, the cells were stained with a Alexa Fluor®488 conjugate-Goat anti-Rabbit IgG Secondary antibody at 1/1,000 dilution for 30 minutes at +4 °C (dark incubation). Unlabelled sample was used as a control (cells without incubation with primary antibody; black).

Note: All products are "FOR RESEARCH USE ONLY AND ARE NOT INTENDED FOR DIAGNOSTIC OR THERAPEUTIC USE".

Background References

1. Wen H. et. al. Grem2 mediates podocyte apoptosis in high glucose milieu. Biochimie. 2019 May
2. Ran A. et. al. GREM2 maintains stem cell-like phenotypes in gastric cancer cells by regulating the JNK signaling pathway. Cell Cycle. 2019 Oct

Hangzhou Huaan Biotechnology Co., Ltd.

Orders:0086-571-88062880

Technical:0086-571-89986345

Service mail:support@huabio.cn

华安生物
HUABIO
www.huabio.cn

Applications:WB=Western blot IHC-P=Immunohistochemistry (paraffin) IF-Cell=Immunofluorescence (Cell) IF-Tissue=Immunofluorescence (Tissue) FC=Flow cytometry IP=Immunoprecipitation