

# Human SLAMF1/SLAM/CD150, C-His Tag Protein

## HA211554



<b>Product name:</b>	Human SLAMF1/SLAM/CD150, C-His Tag
<b>Species reactivity:</b>	Human
<b>Bio-Activity:</b>	Testing in progress.
<b>Protein construction description:</b>	A DNA sequence encoding the human SLAMF1/SLAM/CD150 protein (Q13291-1) (Ala 21 -Pro 237) was expressed with a His tag at the C-terminus.

**Background:** Signaling lymphocytic activation molecule 1 is a protein that in humans is encoded by the SLAMF1 gene. Recently SLAMF1 has also been designated CD150 (cluster of differentiation 150). SLAMF1 belongs to the signaling lymphocytic activation molecule family. As other receptors from this family, SLAMF1 is expressed in different types of hematopoietic cells and it plays a role in the regulation of the immune system.

**Purity:** >95% as determined by SDS-PAGE.

**Endotoxin:** Less than 1.0 EU per µg by the LAL method.

**Fragment region:** SLAMF1/SLAM/CD150 (21-237)

**Source:** HEK293

**Accession:** Q13291-1

**Predicted molecular mass:** 25.7 kD

**Formulation:** Lyophilized from a 0.2 µm filtered solution of PBS, pH7.4, 5% Trehalose, 5% mannitol.

**Reconstitution:** Reconstitute at 250 µg/ml in sterile water.

**Storage:** Please avoid repeated freeze-thaw cycles. Samples are stable for up to twelve months from date of receipt at -20°C to -80°C. It is recommended that aliquot the reconstituted solution to minimize freeze-thaw cycles.

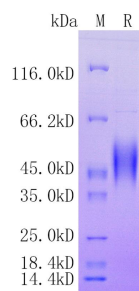
Hangzhou Huaan Biotechnology Co., Ltd.

Orders:0086-571-88062880

Technical:0086-571-89986345

Service mail:support@huabio.cn

  
HUABIO  
www.huabio.cn



**Fig1:** Protein on SDS-PAGE under reducing (R) condition.

---

**Note:** All products are "FOR RESEARCH USE ONLY AND ARE NOT INTENDED FOR DIAGNOSTIC OR THERAPEUTIC USE".

---