

Albumin from human serum Protein

HA211532



Product name: Albumin from human serum

Species reactivity: Human

Bio-Activity: Testing in progress.

Background: Serum albumin (ALB), the main protein in plasma, has a very good binding capacity for water, fatty acids, calcium, sodium, bilirubin, hormones, potassium and drugs. The primary function of ALB is to regulate the colloidal osmotic pressure of blood. Albumin is synthesized in the liver as prealbumin, which has an N-terminal peptide that is removed before the nascent protein is released from the rough endoplasmic reticulum. The product, proalbumin, is in turn cleaved in the Golgi vesicles to produce the secreted form of albumin. Mutations in the ALB gene may result in familial dysalbuminemic hyperthyroxinemia (FDH), a form of euthyroid hyperthyroxinemia that is due to increased affinity of ALB for T4. FDH is the most common cause of inherited euthyroid hyperthyroxinemia in Caucasian populations.

Purity: >95% as determined by SDS-PAGE.

Accession: P02768

Formulation: Lyophilized from a 0.2 μ m filtered solution of PBS, pH7.4, 5% Trehalose, 5% mannitol.

Reconstitution: Reconstitute at 250 μ g/ml in sterile water.

Storage: Please avoid repeated freeze-thaw cycles. Samples are stable for up to twelve months from date of receipt at -20°C to -80°C. It is recommended that aliquot the reconstituted solution to minimize freeze-thaw cycles.

Hangzhou Huaan Biotechnology Co., Ltd.

Orders:0086-571-88062880

Technical:0086-571-89986345

Service mail:support@huabio.cn

 华安生物
HUABIO
www.huabio.cn

Applications:WB=Western blot IHC-P=Immunohistochemistry (paraffin) IF-Cell=Immunofluorescence (Cell) IF-Tissue=Immunofluorescence (Tissue) FC=Flow cytometry IP=Immunoprecipitation

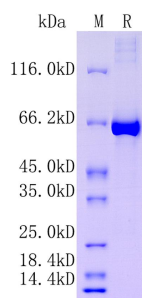


Fig1: Protein on SDS-PAGE under reducing (R) condition.

Note: All products are "FOR RESEARCH USE ONLY AND ARE NOT INTENDED FOR DIAGNOSTIC OR THERAPEUTIC USE".
