

Human CD21/CR2, C-His Tag Protein

HA211498



Product name:	Human CD21/CR2, C-His Tag
Species reactivity:	Human
Bio-Activity:	Testing in progress.
Protein construction description:	A DNA sequence encoding the human CD21/CR2 protein (P20023-1) (Ile21-Arg 971) was expressed with a His tag at the C-terminus.

Background: CD21 is a type I integral membrane glycoprotein that serves as a receptor for the C3d complement fragment and for the Epstein-Barr virus. It plays a role in B cell activation and proliferation and undergoes phosphorylation after B cell activation with phorbol esters. CD21 is expressed on mature B cells, follicular dendritic cells, pharyngeal and cervical epithelial cells and a subset of thymocytes. The adaptive immune response is tightly regulated to limit responding cells in an antigen-specific manner. On B cells, co-receptors CD21/CD19 modulate the strength of B cell Ag receptor (BCR) signals, thereby influencing cell fate. Complement receptor (CR) type 2 (CR2/ CD21) is normally expressed during the immature and mature stages of B cell development. In association with CD19, CD21 plays an important role in enhancing mature B cell responses to foreign antigens.

Purity: >95% as determined by SDS-PAGE.

Endotoxin: Less than 1.0 EU per µg by the LAL method.

Fragment region: CD21/CR2 (21-971)

Source: HEK293

Accession: P20023-1

Predicted molecular mass: 106 kD

Formulation: Lyophilized from a 0.2 µm filtered solution of PBS, pH7.4, 5% Trehalose, 5% mannitol.

Reconstitution: Reconstitute at 250 µg/ml in sterile water.

Storage: Please avoid repeated freeze-thaw cycles. Samples are stable for up to twelve months from date of receipt at -20°C to -80°C. It is recommended that aliquot the reconstituted solution to minimize freeze-thaw cycles.

Hangzhou Huaan Biotechnology Co., Ltd.

Orders:0086-571-88062880

Technical:0086-571-89986345

Service mail:support@huabio.cn

 华安生物
HUABIO
www.huabio.cn

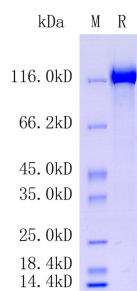


Fig1: Protein on SDS-PAGE under reducing (R) condition.

Note: All products are "FOR RESEARCH USE ONLY AND ARE NOT INTENDED FOR DIAGNOSTIC OR THERAPEUTIC USE".
