

# Human CD38, C-His Tag Protein

HA211487



<b>Product name:</b>	Human CD38, C-His Tag
<b>Species reactivity:</b>	Human
<b>Bio-Activity:</b>	Testing in progress.
<b>Protein construction description:</b>	A DNA sequence encoding the human CD38 protein (P28907-1) (Val 43-Ile 300) was expressed with a His tag at the C-terminus.

**Background:** CD38 is a type II integral membrane glycoprotein which is present on early B and T cell lineages and activated B and T cells but is absent from most mature resting peripheral lymphocytes. CD38 is also found on thymocytes, pre-B cells, germinal center B cells, mitogen-activated T cells, monocytes and Ig-secreting plasma cells. CD38 acts as a NAD glycohydrolase in T lymphocytes. On hematopoietic cells CD38 induces activation, proliferation, and differentiation of mature T and B cells and mediates apoptosis of myeloid and lymphoid progenitor cells. In addition to acting as a signaling receptor, CD38 is also an enzyme capable of producing several calcium-mobilizing metabolites, including cyclic adenosine diphosphate ribose (cADPR). CD38 also plays a role in maintaining survival of an invariant NK T (iNKT) cell subset that preferentially contributes to the maintenance of immunological tolerance.

**Purity:** >95% as determined by SDS-PAGE.

**Endotoxin:** Less than 1.0 EU per µg by the LAL method.

**Fragment region:** CD38 (43-300)

**Source:** HEK293

**Accession:** P28907-1

**Predicted molecular mass:** 31.7 kD

**Formulation:** Lyophilized from a 0.2 µm filtered solution of PBS, pH7.4, 5% Trehalose, 5% mannitol.

**Reconstitution:** Reconstitute at 250 µg/ml in sterile water.

**Storage:** Please avoid repeated freeze-thaw cycles. Samples are stable for up to twelve months from date of receipt at -20°C to -80°C. It is recommended that aliquot the reconstituted solution to minimize freeze-thaw cycles.

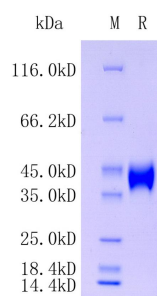
Hangzhou Huaan Biotechnology Co., Ltd.

Orders:0086-571-88062880

Technical:0086-571-89986345

Service mail:support@huabio.cn

 华安生物  
HUABIO  
www.huabio.cn



**Fig1:** Protein on SDS-PAGE under reducing (R) condition.

**Note:** All products are "FOR RESEARCH USE ONLY AND ARE NOT INTENDED FOR DIAGNOSTIC OR THERAPEUTIC USE".