

# Human Autotaxin/ENPP-2, C-His Tag Protein

HA211477



<b>Product name:</b>	Human Autotaxin/ENPP-2, C-His Tag
<b>Species reactivity:</b>	Human
<b>Bio-Activity:</b>	Testing in progress.
<b>Protein construction description:</b>	A DNA sequence encoding the human Autotaxin/ENPP-2 protein (Q13822-1) (Asp 49-Ile863) was expressed with a His tag at the C-terminus.
<b>Background:</b>	Autotaxin, also known as ectonucleotide pyrophosphatase/phosphodiesterase family member 2 (E-NPP 2), is an enzyme that in humans is encoded by the ENPP2 gene. Autotaxin is a secreted enzyme important for generating the lipid signaling molecule lysophosphatidic acid (LPA). Autotaxin has lysophospholipase D activity that converts lysophosphatidylcholine into LPA. Autotaxin was originally identified as a tumor cell-motility-stimulating factor; later it was shown to be LPA (which signals through lysophospholipid receptors), the lipid product of the reaction catalyzed by autotaxin, which is responsible for its effects on cell-proliferation.
<b>Purity:</b>	>95% as determined by SDS-PAGE.
<b>Endotoxin:</b>	Less than 1.0 EU per µg by the LAL method.
<b>Fragment region:</b>	Autotaxin/ENPP-2 (49-863)
<b>Source:</b>	HEK293
<b>Accession:</b>	Q13822-1
<b>Predicted molecular mass:</b>	95.5 kD
<b>Formulation:</b>	Lyophilized from a 0.2 µm filtered solution of PBS, pH7.4, 5% Trehalose, 5% mannitol.
<b>Reconstitution:</b>	Reconstitute at 250 µg/ml in sterile water.
<b>Storage:</b>	Please avoid repeated freeze-thaw cycles. Samples are stable for up to twelve months from date of receipt at -20°C to -80°C. It is recommended that aliquot the reconstituted solution to minimize freeze-thaw cycles.

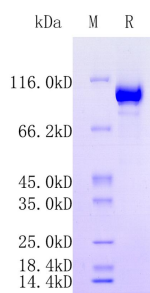
Hangzhou Huaan Biotechnology Co., Ltd.

Orders:0086-571-88062880

Technical:0086-571-89986345

Service mail:support@huabio.cn

 华安生物  
HUABIO  
www.huabio.cn



**Fig1:** Protein on SDS-PAGE under reducing (R) condition.

---

**Note:** All products are "FOR RESEARCH USE ONLY AND ARE NOT INTENDED FOR DIAGNOSTIC OR THERAPEUTIC USE".

---