

Human Glypican 3/GPC3, C-His Tag Protein

HA211441



Product name:	Human Glypican 3/GPC3, C-His Tag
Species reactivity:	Human
Bio-Activity:	Testing in progress.
Protein construction description:	A DNA sequence encoding the human Glypican 3/GPC3 protein (P51654-1) (Gln 25-His 599) was expressed with a His tag at the C-terminus.

Background: Members of the glypican-related integral membrane proteoglycan family (GRIPS) contain a core protein anchored to the cytoplasmic membrane via a glycosyl phosphatidylinositol linkage. These proteins may play a role in the control of cell division and growth regulation. The protein encoded by this gene can bind to and inhibit the dipeptidyl peptidase activity of CD26, and it can induce apoptosis in certain cell types. Deletion mutations in this gene are associated with Simpson-Golabi-Behmel syndrome, also known as Simpson dysmorphia syndrome. Alternative splicing results in multiple transcript variants.

Purity: >95% as determined by SDS-PAGE.

Endotoxin: Less than 1.0 EU per µg by the LAL method.

Fragment region: Glypican 3/GPC3 (25-599)

Source: HEK293

Accession: P51654-1

Predicted molecular mass: 62.6 kD

Formulation: Lyophilized from a 0.2 µm filtered solution of PBS, pH7.4, 5% Trehalose, 5% mannitol.

Reconstitution: Reconstitute at 250 µg/ml in sterile water.

Storage: Please avoid repeated freeze-thaw cycles. Samples are stable for up to twelve months from date of receipt at -20°C to -80°C. It is recommended that aliquot the reconstituted solution to minimize freeze-thaw cycles.

Hangzhou Huaan Biotechnology Co., Ltd.

Orders:0086-571-88062880

Technical:0086-571-89986345

Service mail:support@huabio.cn

 华安生物
HUABIO
www.huabio.cn

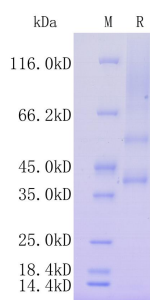


Fig1: Protein on SDS-PAGE under reducing (R) condition.

Note: All products are "FOR RESEARCH USE ONLY AND ARE NOT INTENDED FOR DIAGNOSTIC OR THERAPEUTIC USE".