

Human Granzyme K, Tag Free Protein

HA211391



Product name:	Human Granzyme K, Tag Free
Species reactivity:	Human
Bio-Activity:	Testing in progress.
Protein construction description:	A DNA sequence encoding the human Granzyme K protein (P49863) (Ile 27-Asn 264) was expressed with a His tag at the C-terminus.

Background: Granzyme K (GzmK) is a serine protease that sits in the dense-core granules of cytotoxic T lymphocytes and NK cells. While its gene neighbors encode granzymes A–C, GzmK stands out by lacking the N-linked glycosylation motifs that decorate most family members; this minimalist design keeps it stable at the low pH of the granule and allows it to emerge in an immediately active form once perforin has punched entry holes in a target cell. Inside the cytosol, GzmK bypasses the canonical caspase cascade: it clips Bid to tBid, nicks the anti-apoptotic SET complex, and generates single-stranded DNA nicks that push the cell into a swift form of death intermediate between apoptosis and necrosis. In addition, any GzmK that leaks into the extracellular space can process pro-IL-1 β and activate PAR-2 on macrophages and endothelial cells, turning a private hit into a broader inflammatory alert.

Purity: >95% as determined by SDS-PAGE.

Endotoxin: Less than 1.0 EU per μ g by the LAL method.

Fragment region: Granzyme K (27-264)

Source: HEK293

Accession: P49863

Predicted molecular mass: 26.2 kD

Formulation: Lyophilized from a 0.2 μ m filtered solution of PBS, pH7.4, 5% Trehalose, 5% mannitol.

Reconstitution: Reconstitute at 250 μ g/ml in sterile water.

Storage: Please avoid repeated freeze-thaw cycles. Samples are stable for up to twelve months from date of receipt at -20°C to -80°C. It is recommended that aliquot the reconstituted solution to minimize freeze-thaw cycles.

Hangzhou Huaan Biotechnology Co., Ltd.

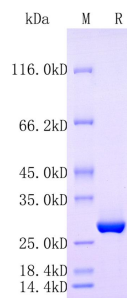
Orders: 0086-571-88062880

Technical: 0086-571-89986345

Service mail: support@huabio.cn

华安生物
HUABIO
www.huabio.cn

Applications: WB=Western blot IHC-P=Immunohistochemistry (paraffin) IF-Cell=Immunofluorescence (Cell) IF-Tissue=Immunofluorescence (Tissue) FC=Flow cytometry IP=Immunoprecipitation



Note: All products are “FOR RESEARCH USE ONLY AND ARE NOT INTENDED FOR DIAGNOSTIC OR THERAPEUTIC USE”.

Hangzhou Huaan Biotechnology Co.,Ltd.

Orders:0086-571-88062880

Technical:0086-571-89986345

Service mail:support@huabio.cn

华安生物
HUABIO
www.huabio.cn

Applications:WB=Western blot IHC-P=Immunohistochemistry (paraffin) IF-Cell=Immunofluorescence (Cell) IF-Tissue=Immunofluorescence (Tissue) FC=Flow cytometry IP=Immunoprecipitation