

# Human Pro-Collagen I alpha 1/COL1A1, Tag Free Protein

## HA211375



<b>Product name:</b>	Human Pro-Collagen I alpha 1/COL1A1, Tag Free
<b>Species reactivity:</b>	Human
<b>Bio-Activity:</b>	Testing in progress.
<b>Protein construction description:</b>	A DNA sequence encoding the human Pro-Collagen I alpha 1/COL1A1 protein (P02452) (Gln 23-Pro 161) was expressed with tag free.

**Background:** Collagen, type I, alpha 1, also known as alpha-1 type I collagen, is a protein that in humans is encoded by the COL1A1 gene. COL1A1 encodes the major component of type I collagen, the fibrillar collagen found in most connective tissues, including cartilage. Collagen is a protein that strengthens and supports many tissues in the body, including cartilage, bone, tendon, skin and the white part of the eye (sclera). The COL1A1 gene produces a component of type I collagen, called the pro-alpha1(I) chain. This chain combines with another pro-alpha1(I) chain and also with a pro-alpha2(I) chain (produced by the COL1A2 gene) to make a molecule of type I procollagen. These triple-stranded, rope-like procollagen molecules must be processed by enzymes outside the cell. Once these molecules are processed, they arrange themselves into long, thin fibrils that cross-link to one another in the spaces around cells. The cross-links result in the formation of very strong mature type I collagen fibers. Collagenous function includes rigidity and elasticity.

<b>Purity:</b>	>95% as determined by SDS-PAGE.
<b>Endotoxin:</b>	Less than 1.0 EU per µg by the LAL method.
<b>Fragment region:</b>	Pro-Collagen I alpha 1/COL1A1 (23-161)
<b>Source:</b>	HEK293
<b>Accession:</b>	P02452
<b>Predicted molecular mass:</b>	15 kD
<b>Formulation:</b>	Lyophilized from a 0.2 µm filtered solution of PBS, pH7.4, 5% Trehalose, 5% mannitol.
<b>Reconstitution:</b>	Reconstitute at 250 µg/ml in sterile water.
<b>Storage:</b>	Please avoid repeated freeze-thaw cycles. Samples are stable for up to twelve months from date of receipt at -20°C to -80°C. It is recommended that aliquot the reconstituted solution to minimize freeze-thaw cycles.

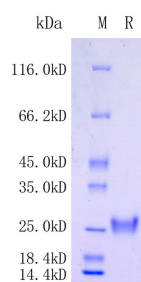
Hangzhou Huaan Biotechnology Co., Ltd.

Orders:0086-571-88062880

Technical:0086-571-89986345

Service mail:support@huabio.cn

 华安生物  
HUABIO  
www.huabio.cn



**Fig1:** Protein on SDS-PAGE under reducing (R) condition.

---

**Note:** All products are "FOR RESEARCH USE ONLY AND ARE NOT INTENDED FOR DIAGNOSTIC OR THERAPEUTIC USE".

---