

Human Synapsin-1/SYN1, C-Flag Tag Protein

HA211359



Product name:	Human Synapsin-1/SYN1, C-Flag Tag
Species reactivity:	Human
Bio-Activity:	Testing in progress.
Protein construction description:	A DNA sequence encoding the human Synapsin-1/SYN1 protein (P17600-1) (Met 1-Asp 705) was expressed with a Flag tag at the C-terminus.

Background: Synapsin I, is the collective name for Synapsin Ia and Synapsin Ib, two nearly identical phosphoproteins that in humans are encoded by the SYN1 gene. In its phosphorylated form, Synapsin I may also be referred to as phosphosynapsin I. Synapsin I is the first of the proteins in the synapsin family of phosphoproteins in the synaptic vesicles present in the central and peripheral nervous systems. Synapsin Ia and Ib are close in length and almost the same in make up, however, Synapsin Ib stops short of the last segment of the C-terminal in the amino acid sequence found in Synapsin Ia.

Purity: >95% as determined by SDS-PAGE.

Endotoxin: Less than 1.0 EU per µg by the LAL method.

Fragment region: Synapsin-1/SYN1 (1-705)

Source: HEK293

Accession: P17600-1

Predicted molecular mass: 75.7 kD

Formulation: Lyophilized from a 0.2 µm filtered solution of PBS, pH7.4, 5% Trehalose, 5% mannitol.

Reconstitution: Reconstitute at 250 µg/ml in sterile water.

Storage: Please avoid repeated freeze-thaw cycles. Samples are stable for up to twelve months from date of receipt at -20°C to -80°C. It is recommended that aliquot the reconstituted solution to minimize freeze-thaw cycles.

Hangzhou Huaan Biotechnology Co., Ltd.

Orders: 0086-571-88062880

Technical: 0086-571-89986345

Service mail: support@huabio.cn

 华安生物
HUABIO
www.huabio.cn

Applications: WB=Western blot IHC-P=Immunohistochemistry (paraffin) IF-Cell=Immunofluorescence (Cell) IF-Tissue=Immunofluorescence (Tissue) FC=Flow cytometry IP=Immunoprecipitation

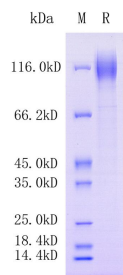


Fig1: Protein on SDS-PAGE under reducing (R) condition.

Note: All products are “FOR RESEARCH USE ONLY AND ARE NOT INTENDED FOR DIAGNOSTIC OR THERAPEUTIC USE”.