

Human IL-20, C-hFc Tag Protein

HA211268



| | |
|--|---|
| Product name: | Human IL-20, C-hFc Tag |
| Species reactivity: | Human |
| Bio-Activity: | Testing in progress. |
| Protein construction description: | A DNA sequence encoding the human IL-20 protein (Q9NYY1-1) (Leu 25-Glu 176) was expressed with a hFc tag at the C-terminus. |

| | |
|--------------------|--|
| Background: | Pro-inflammatory and angiogenic cytokine mainly secreted by monocytes and skin keratinocytes that plays crucial roles in immune responses, regulation of inflammatory responses, hemopoiesis, as well as epidermal cell and keratinocyte differentiation. Enhances tissue remodeling and wound-healing activities and restores the homeostasis of epithelial layers during infection and inflammatory responses to maintain tissue integrity. Affects multiple actin-mediated functions in activated neutrophils leading to inhibition of phagocytosis, granule exocytosis, and migration. Alternatively, can mediate its activity through a second receptor complex called type II IL-20 receptor complex composed of IL22RA1 and IL20RB. Acts as an arteriogenic and vascular remodeling factory by activating a range of signaling processes including phosphorylations of JAK2 and STAT5 as well as activation of the serine and threonine kinases AKT and ERK1/2. |
|--------------------|--|

Purity: >95% as determined by SDS-PAGE.

Endotoxin: Less than 1.0 EU per µg by the LAL method.

Fragment region: IL-20 (25-176)

Source: HEK293

Accession: Q9NYY1-1

Predicted molecular mass: 44.2 kD

Formulation: Lyophilized from a 0.2 µm filtered solution of PBS, pH7.4, 5% Trehalose, 5% mannitol.

Reconstitution: Reconstitute at 250 µg/ml in sterile water.

Storage: Please avoid repeated freeze-thaw cycles. Samples are stable for up to twelve months from date of receipt at -20°C to -80°C. It is recommended that aliquot the reconstituted solution to minimize freeze-thaw cycles.

Hangzhou Huaan Biotechnology Co., Ltd.

Orders: 0086-571-88062880

Technical: 0086-571-89986345

Service mail: support@huabio.cn

华安生物
HUABIO
www.huabio.cn

Applications: WB=Western blot IHC-P=Immunohistochemistry (paraffin) IF-Cell=Immunofluorescence (Cell) IF-Tissue=Immunofluorescence (Tissue) FC=Flow cytometry IP=Immunoprecipitation

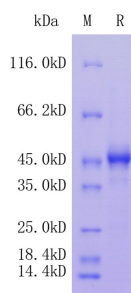


Fig1: Protein on SDS-PAGE under reducing (R) condition.

Note: All products are “FOR RESEARCH USE ONLY AND ARE NOT INTENDED FOR DIAGNOSTIC OR THERAPEUTIC USE”.