

Human CSF3R/G-CSFR/CD114, C-His Tag Protein

HA211262



Product name:	Human CSF3R/G-CSFR/CD114, C-His Tag
Species reactivity:	Human
Bio-Activity:	Testing in progress.
Protein construction description:	A DNA sequence encoding the human CSF3R/G-CSFR/CD114 protein (Q99062-1) (Glu 25-Pro 621) was expressed with a His tag at the C-terminus.

Background: The granulocyte colony-stimulating factor receptor (G-CSF-R) also known as CD114 (Cluster of Differentiation 114) is a protein that in humans is encoded by the CSF3R gene. G-CSF-R is a cell-surface receptor for the granulocyte colony-stimulating factor (G-CSF). The G-CSF receptors belong to a family of cytokine receptors known as the hematopoietin receptor family. The granulocyte colony-stimulating factor receptor is present on precursor cells in the bone marrow, and, in response to stimulation by G-CSF, initiates cell proliferation and differentiation into mature neutrophilic granulocytes and macrophages. The G-CSF-R is a transmembrane receptor that consists of an extracellular ligand-binding portion, a transmembrane domain, and the cytoplasmic portion that is responsible for signal transduction. G-CSF-R ligand-binding is associated with dimerization of the receptor and signal transduction through proteins including Jak, Lyn, STAT, and Erk1/2.

Purity: >95% as determined by SDS-PAGE.

Endotoxin: Less than 1.0 EU per µg by the LAL method.

Fragment region: CSF3R/G-CSFR/CD114 (25-621)

Source: HEK293

Accession: Q99062-1

Predicted molecular mass: 68.3 kD

Formulation: Lyophilized from a 0.2 µm filtered solution of PBS, pH7.4, 5% Trehalose, 5% mannitol.

Reconstitution: Reconstitute at 250 µg/ml in sterile water.

Storage: Please avoid repeated freeze-thaw cycles. Samples are stable for up to twelve months from date of receipt at -20°C to -80°C. It is recommended that aliquot the reconstituted solution to minimize freeze-thaw cycles.

Hangzhou Huaan Biotechnology Co., Ltd.

Orders: 0086-571-88062880

Technical: 0086-571-89986345

Service mail: support@huabio.cn

华安生物
HUABIO
www.huabio.cn

Applications: WB=Western blot IHC-P=Immunohistochemistry (paraffin) IF-Cell=Immunofluorescence (Cell) IF-Tissue=Immunofluorescence (Tissue) FC=Flow cytometry IP=Immunoprecipitation

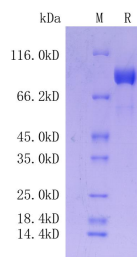


Fig1: Protein on SDS-PAGE under reducing (R) condition.

Note: All products are “FOR RESEARCH USE ONLY AND ARE NOT INTENDED FOR DIAGNOSTIC OR THERAPEUTIC USE”.