

Human Kininogen 1, C-His Tag Protein

HA211254



Product name:	Human Kininogen 1, C-His Tag
Species reactivity:	Human
Bio-Activity:	Testing in progress.
Protein construction description:	A DNA sequence encoding the human Kininogen 1 protein (P01042-1) (Gln 19-Ser 644) was expressed with a His tag at the C-terminus.

Background: Kininogen-1 (KNG1), also known as alpha-2-thiol proteinase inhibitor, Williams-Fitzgerald-Flaujeac factor or the HMWK-kallikrein factor is a protein that in humans is encoded by the KNG1 gene. Kininogen-1 is the precursor protein to high-molecular-weight kininogen (HMWK), low-molecular-weight kininogen (LMWK), and bradykinin. The KNG1 gene uses alternative splicing to generate two different proteins: high-molecular-weight kininogen (HMWK) and low-molecular-weight kininogen (LMWK). HMWK in turn is cleaved by the enzyme kallikrein to produce bradykinin. HMWK is essential for blood coagulation and assembly of the kallikrein-kinin system. Also, bradykinin, a peptide causing numerous physiological effects, is released from HMWK. In contrast to HMWK, LMWK is not involved in blood coagulation. Kininogen-1 is a constituent of the blood coagulation system as well as the kinin-kallikrein system.

Purity:	>95% as determined by SDS-PAGE.
Endotoxin:	Less than 1.0 EU per µg by the LAL method.
Fragment region:	Kininogen 1 (19-644)
Source:	HEK293
Accession:	P01042-1
Predicted molecular mass:	71.7 kD
Formulation:	Lyophilized from a 0.2 µm filtered solution of PBS, pH7.4, 5% Trehalose, 5% mannitol.
Reconstitution:	Reconstitute at 250 µg/ml in sterile water.
Storage:	Please avoid repeated freeze-thaw cycles. Samples are stable for up to twelve months from date of receipt at -20°C to -80°C. It is recommended that aliquot the reconstituted solution to minimize freeze-thaw cycles.

Hangzhou Huaan Biotechnology Co., Ltd.

Orders:0086-571-88062880

Technical:0086-571-89986345

Service mail:support@huabio.cn

 华安生物
HUABIO
www.huabio.cn

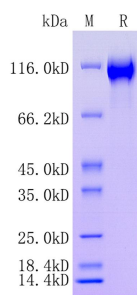


Fig1: Protein on SDS-PAGE under reducing (R) condition.

Note: All products are "FOR RESEARCH USE ONLY AND ARE NOT INTENDED FOR DIAGNOSTIC OR THERAPEUTIC USE".
